



Buckley Gardens

Chickerell, Weymouth DT3 4FZ

- Three bed Semi-Detached
 - Detached Garage
- Popular Chickerell location
- Large Kitchen / Diner
- Large enclosed rear garden
- Walking distance to local amenities

Offers In Excess Of £315,000 Freehold





Garage & Front of Property

A well proportioned garage with an up and over door, gated access into the rear garden, a driveway space in front of the garage door. An obscured double glazed door opens into the entrance hallway.

Entrance Hallway

Welcoming entrance hallway featuring tiled flooring, stairs rising to the first floor, and doors leading to the living room, kitchen, and downstairs W/C.

Living Room

9'10" x 13'5"

A bright front-aspect reception room with double glazed windows, centred around a chimney breast with an electric fireplace, creating a cosy focal point.



Kitchen

17'4" x 9'10"

An immaculately presented, rear aspect kitchen fitted with tiled flooring and modern units. Features include an eye level oven, five ring gas hob with extractor hood, built in fridge freezer, and a stainless steel 1.5 bowl sink with mixer tap. Double glazed windows and French doors open onto the rear garden, while ceiling spotlights and a tiled splashback complete the space.

First Floor Landing

Spacious landing with loft access hatch, a large storage cupboard, and an airing cupboard housing the Vaillant combination boiler.

Bedroom One

9'6" x 11'7"

A generous front-aspect double bedroom with a double glazed window and ample space for wardrobes.

Bedroom Two

8'10" x 11'7"

A well-proportioned rear-aspect double bedroom with a large double glazed window overlooking the garden.

Bedroom Three

8'2" x 6'9"

A rear-aspect bedroom featuring a double window, ideal as a child's room, guest room, or home office.

Bathroom

A well-sized, fully tiled front-aspect bathroom comprising a low-level W/C, heated towel rail, and a large bath with shower attachment and stylish wall-mounted taps.

Rear Garden

A well-proportioned, southerly facing garden enjoying plenty of natural light. Laid with patio for low maintenance, it also benefits from gated side access, wooden fencing for privacy, outdoor lighting, and external power points.

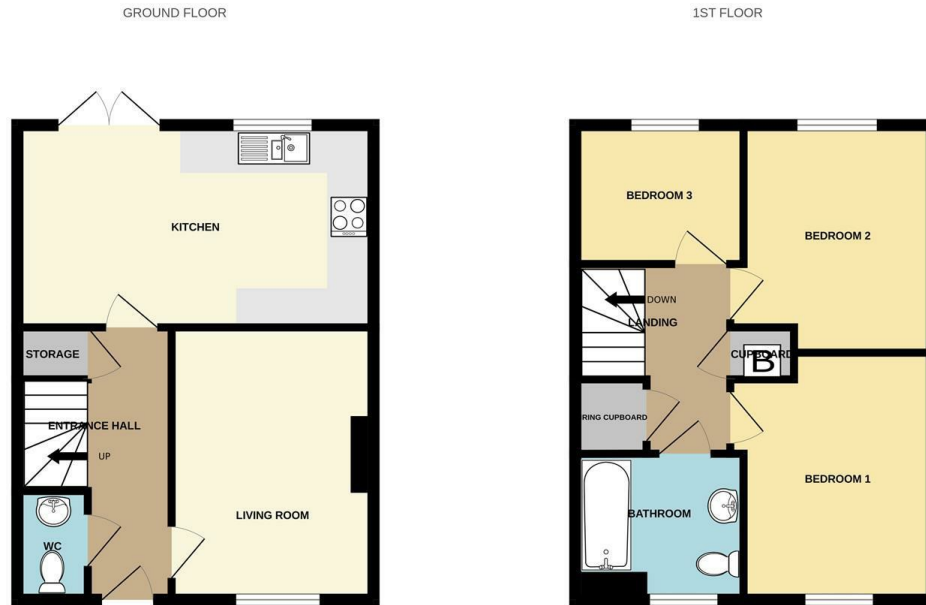
Disclaimer

Direct Moves Estate Agents make no representations or warranties regarding the accuracy, completeness, or reliability of the property details provided. These details are for informational purposes only and should not be relied upon in any way. The information is not intended to form part of any contract and does not constitute an offer or guarantee by Direct Moves.

Should you wish to proceed with an offer on this property, we are obligated by HMRC to conduct mandatory Anti-Money Laundering Checks. We outsource these checks to our compliance partners at Coadjute and they charge a fee for this service.



Local Authority
Council Tax Band **D**
EPC Rating **B**



Whilst every attempt has been made to ensure the accuracy of the floorplan contained here, measurements of doors, windows, rooms and any other items are approximate and no responsibility is taken for any error, omission or mis-statement. This plan is for illustrative purposes only and should be used as such by any prospective purchaser. The services, systems and appliances shown have not been tested and no guarantee as to their operability or efficiency can be given.
Made with Metropix ©2025

Direct Moves Estate Agents Office

9 Westham Road
Dorset
Weymouth
DT4 8NP

Contact

01305 778500
sales@directmoves.com
<https://directmoves.com/>

Agents Note: Whilst every care has been taken to prepare these particulars, they are for guidance purposes only. All measurements are approximate and for general guidance purposes only and whilst every care has been taken to ensure accuracy, they should not be relied upon and potential buyers/tenants are advised to recheck the measurements.

