



Guide Price
£325,000

Leasehold

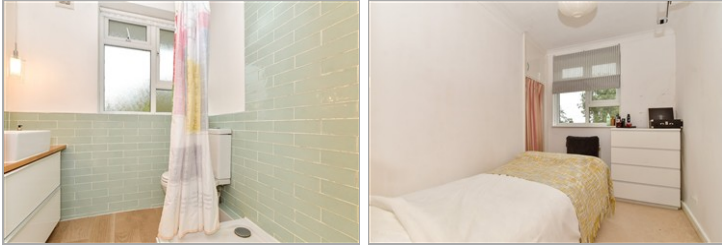
2x  1x  1x 

**Montalt House, Montalt
Road, Woodford Green,
Essex, IG8**

OVER 60?

Secure this property
for up to **59% less!**

 **DOUGLAS
ALLEN**
Helping you move forwards



Main features

- First floor flat with a long lease
- Garage en bloc
- Close proximity to the High Road and Woodford Central Line station
- modern kitchen and shower room
- Ideal first purchase
- Being sold with no onward chain

Accommodation

FIRST FLOOR

Entrance Hall

Balcony

Lounge/Diner: 14'0 x 11'11 (4.27m x 3.63m)

Kitchen : 9'11 x 6'8 (3.02m x 2.03m)

Bedroom 1: 13'10 x 9'6 (4.22m x 2.90m)

Bedroom 2: 10'5 x 6'10 (3.18m x 2.08m)

Shower Room

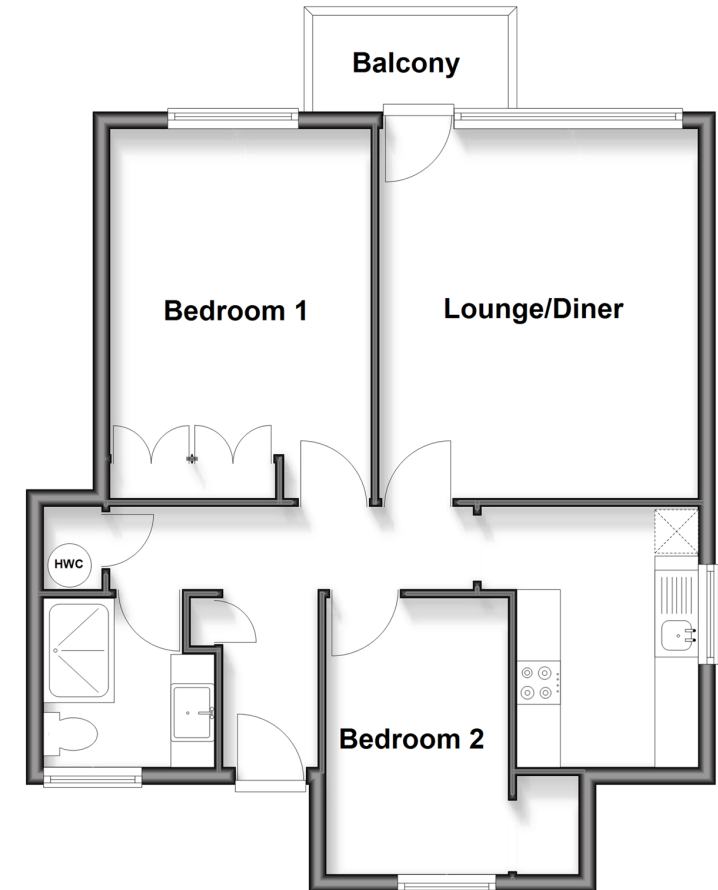
OUTSIDE

Garage En Bloc

Communal Garden

First Floor

Approx. 55.6 sq. metres (598.8 sq. feet)



Call Woodford Green - 020 8505 6343 ■ douglasallen.co.uk

- Legal advice should be taken to verify fixtures/fittings, planning, alterations and/or lease details
- Appliances & services are untested, dimensions are approximate and floor plans are not to scale
- Through a Homewise Home For Life Plan people aged 60+ can secure this property for up to 50% less, by purchasing a Lifetime Lease.



53619285/20251015/SP/SP