



## Riddell Way, St. Helens, WA9

£1,210 Per Month

Nestled in the area of Sutton, Juniper Grove has a lovely balance of lively bars, shops and restaurants, as well as quiet green spaces and parks all within easy reach of your front door.

The Ellesmere is a stunning home built with your needs in mind. Downstairs, there is a generous living room, hallway and WC. The rear of the property has a magnificent living/kitchen area with a range of contemporary fitted units with integrated appliances. The room has French windows opening onto and overlooking the rear garden as well as a series of skylights which flood the room with light – an ideal space for both family time and entertaining.

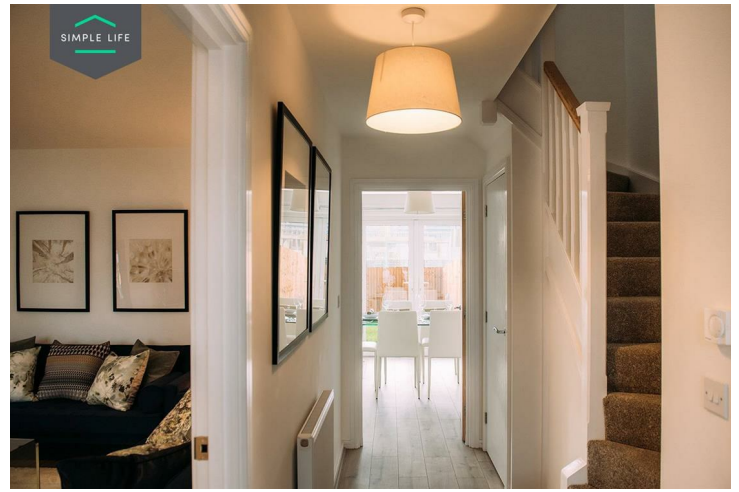
Upstairs there is a spacious family bathroom complete with a bath and shower, a master bedroom with fitted, mirrored wardrobes and two further well-proportioned bedrooms. At the top of the stairs you will also find a handy store cupboard.

The site is perfectly situated for easy access to both Manchester and Liverpool with two train stations within the local area. For those who enjoy a bit of night-life, St Helen's has it down to a tee with plenty of places to eat and drink.

Families and children would quickly feel at home at Juniper Grove, with plenty of things to keep the kids entertained locally, as well as a wide choice of Ofsted rated 'Good' local schools, including Sherdley Primary School, St Anne's Catholic Primary School and Willow Tree Primary School.

Deposit £1390  
Holding Deposit £270  
Council Tax B  
Unfurnished  
Available 11th August 2026





## Key Features

- Private driveway
- Fitted wardrobes to master bedroom
- Fridge freezer
- Oven and hob
- Private back garden with patio area
- Security alarm system
- Dishwasher
- Washing/drying machine
- Light wash wood effect flooring
- White blinds in bedrooms

## Location

