

15 Sarlou Close,
Mumbles, Swansea,
SA3 4JG

2 1 1



15 Sarlou Close, Mumbles, Swansea, SA3 4JG

£195,000



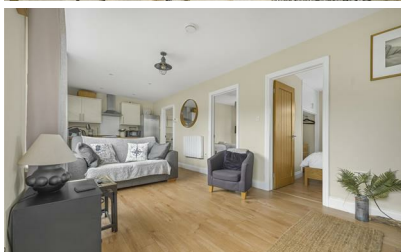
Nestled in the highly sought-after coastal location of Limeslade, this charming two-bedroom end of terrace chalet offers a wonderful opportunity for those seeking a well-presented and low-maintenance home or holiday retreat. With a total floor area of 484 square feet, the property is thoughtfully laid out and benefits from being sold with no onward chain, making for a smooth and hassle-free purchase.

Inside, the accommodation comprises an inviting open-plan kitchen and living room, perfect for relaxing or entertaining. Two comfortable bedrooms provide restful spaces, while the modern shower room completes the internal layout.

Externally, the property continues to impress with a raised patio seating area to the front, offering ample space for outdoor furniture—an ideal spot to enjoy the peaceful surroundings. To the rear, a further patio area also provides generous room for seating and alfresco dining. A detached garden shed offers useful additional storage.

This delightful chalet is perfectly positioned to enjoy the coastal charm and natural beauty of Limeslade, making it a fantastic choice for those seeking a serene retreat or an investment in a prime location.

Furthermore, the chalet benefits from being freehold with 12-month holiday occupancy, providing flexibility for personal use or potential income generation through holiday rentals.



Entrance

Via a frosted double glazed PVC door into the open plan kitchen/living room.

Kitchen/Living Room

23'8" x 9'8"

With sets of double glazed windows to the front. Radiator. Doors to bedrooms. Door to bathroom. The kitchen is fitted with a range of base and wall units. Running work surface incorporating one and a half bowl stainless steel sink and drainer unit. Four ring Lamona induction hob with oven and grill under. Extractor hood over. Space for washing machine. Space for American style fridge freezer. Breakfast bar.

Kitchen/Living Room

Kitchen/Living Room

Kitchen/Living Room

Shower Room

5'8" x 10'4"

You have a frosted double glazed window to the rear. Well appointed suite comprising a large walk-in shower. WC. Wash hand basin. Tiled floor. Part tiled walls. Chrome heated towel rail. Spotlights. Extractor fan.

Shower Room

Bedroom One

10'1" x 8'1"

You have a set of double glazed PVC doors to the rear garden. Radiator. Opening to built-in storage cupboard.

Bedroom One

Bedroom Two

9'11" x 7'3"

Set of double glazed windows to the rear. Radiator. Opening to built-in storage cupboard.

Bedroom Two

External



Front

You have a raised patio seating area with ample room for tables and chairs.

Front

Rear

You have a patio seating area with ample room for tables and chairs. Detached garden shed.

Rear

Services

Mains electric. Mains sewerage. Mains water. Broadband type available on the road - full fibre. Mobile phone coverage available with EE, O2 & Vodafone.

Council Tax Band

Council Tax Band - B

Tenure

Freehold.

Aerial Aspect


Aerial Aspect

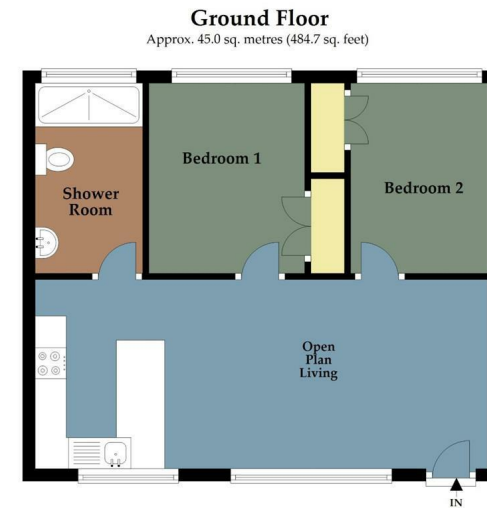
Aerial Aspect

Aerial Aspect





Energy Efficiency Rating		Current	Potential
<i>Very energy efficient - lower running costs</i>			
(92 plus) A			<div style="text-align: center;"> 91 </div>
(81-91) B			
(69-80) C			
(55-68) D			
(39-54) E		56	
(21-38) F			
(1-20) G			
<i>Not energy efficient - higher running costs</i>			
England & Wales		EU Directive 2002/91/EC	



Total area: approx. 45.0 sq. metres (484.7 sq. feet)

Astleys use all reasonable endeavours to supply accurate property information in line with the consumer protection from unfair trading regulations 2008. These property details do not constitute any part of the offer or contract and all measurements are approximate. The matters in these particulars should be independently verified by prospective purchasers and it should not be assumed this property has all the necessary building regulations and planning permissions. Any heating, services and appliances have not been checked or tested. Floor plan is not to scale and is for illustrative purposes only.
Plan produced using PlanUp.