

Regent Street, Church Gresley, Swadlincote, DE11 9PQ

£150,000

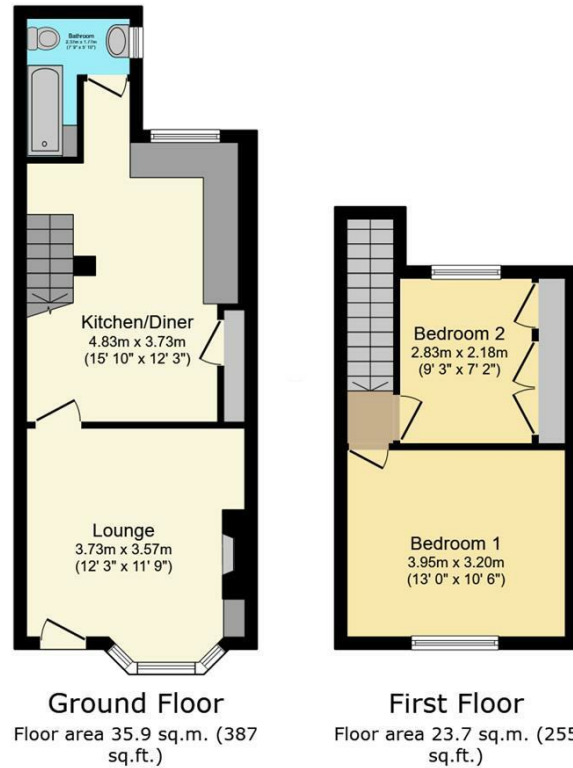
Council Tax Band: A



Located on Regent Street in Church Gresley, this well presented two bedroom mid-terrace offers a practical layout, a generous rear garden and modern décor throughout. The property combines a comfortable front lounge, an open-plan kitchen/diner ideal for everyday living, and a contemporary ground floor bathroom. Upstairs are two well proportioned bedrooms. Outside, the large rear garden provides both patio and lawn areas, perfect for relaxing or entertaining. Situated within easy reach of local shops, schools and Swadlincote Town Centre, this is an excellent first time buy or investment opportunity.



Open House Burton & Swadlincote



Total floor area: 59.6 sq.m. (642 sq.ft.)

This floor plan is for illustrative purposes only. It is not drawn to scale. Any measurements, floor areas (including any total floor area), openings and orientations are approximate. No details are guaranteed, they cannot be relied upon for any purpose and do not form any part of any agreement. No liability is taken for any error, omission or misstatement. A party must rely upon its own inspection(s). Powered by www.Propertybox.io



Energy Efficiency Rating		Current	Potential
Very energy efficient - lower running costs			
(92 plus)	A		
(81-91)	B		
(69-80)	C		78
(55-68)	D	65	
(39-54)	E		
(21-38)	F		
(1-20)	G		
Not energy efficient - higher running costs			
England & Wales		EU Directive 2002/91/EC	