



Waldegrave Road, TW11

£1,695 Per calendar month

Dexters



Waldegrave Road, TW11

With your own entrance and private garden this one bedroom apartment is in excellent condition and it is situated close to transport links into London.

The spacious reception room is open plan onto a modern kitchen, there is space to dine and there are French doors that lead onto the garden.

The garden is big and laid to lawn with a patio. There is also side access which is ideal for bikes or even large pieces of furniture. The double bedroom has high ceilings and plenty of room if you wish to have built in storage.

In addition there is a modern shower room. Located on the side of the building this apartment feels secure and private, there is also off street parking on the front drive on a first come first serve basis.

Waldegrave Road is a turning off Teddington High Street with plenty of shops/ bars and restaurants. A great position if you need transport links with Teddington mainline station close by and plenty of bus routes.

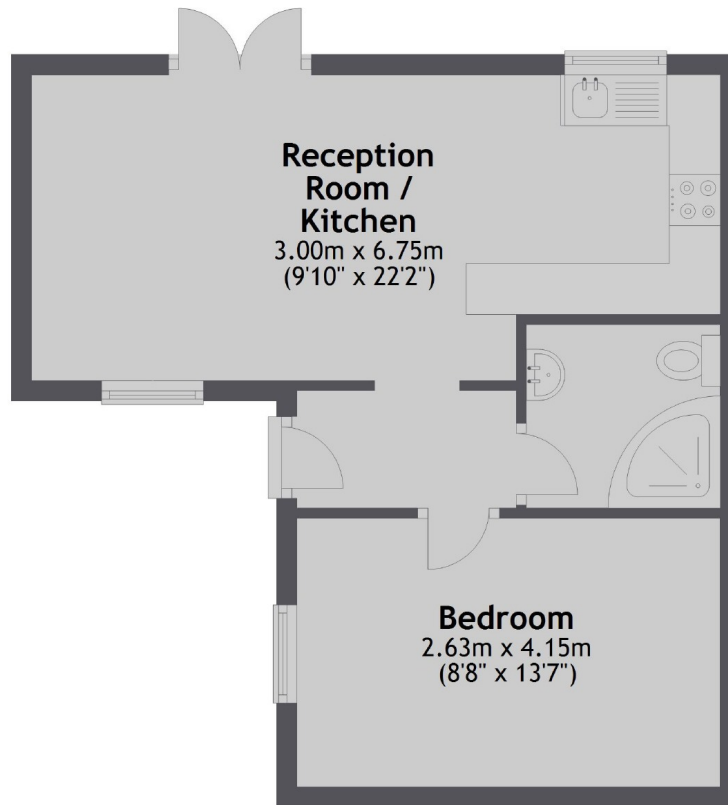
Features

- Ground Floor
- Private Garden
- Well Presented
- Good Location
- Double Bedroom
- Open Plan Kitchen



Waldegrave Road, Teddington, TW11

Ground Floor



Total area: approx. 36.8 sq. metres (395.7 sq. feet)