



## 2 Elmsfield Road, Liverpool, L23 1UW

£1,150 PCM

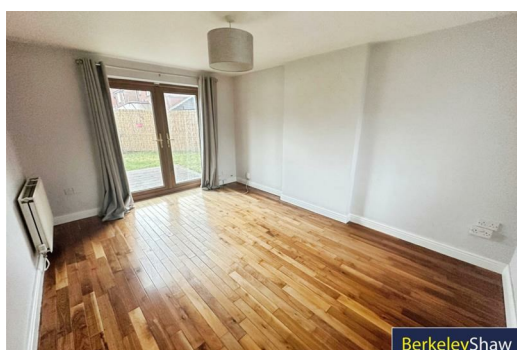
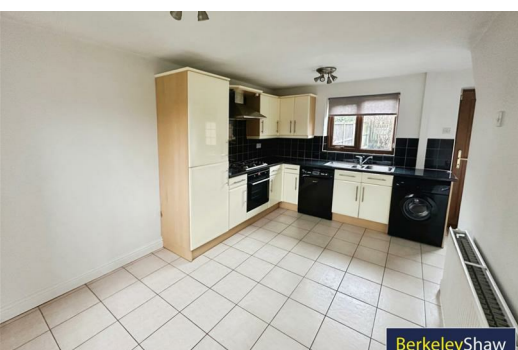
3 Bedroom Unfurnished Double fronted End of Terrace House in Elmsfield Road, Thornton, this delightful house presents an excellent opportunity for those seeking a comfortable and inviting home. The property boasts a warm and welcoming atmosphere, perfect for families or individuals looking to settle in a vibrant community.

As you approach the house, you will be greeted by its attractive façade, which hints at the character and charm that lies within. The interior offers a spacious layout, allowing for both relaxation and entertaining. Natural light floods the living spaces, creating a bright and airy environment that enhances the overall appeal of the home.

The kitchen is well-equipped, providing ample space for culinary adventures and family gatherings. It seamlessly connects to the dining area, making it an ideal setting for shared meals and cherished moments. Three bedrooms offering a peaceful retreat at the end of a busy day.

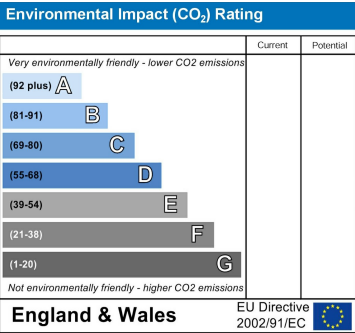
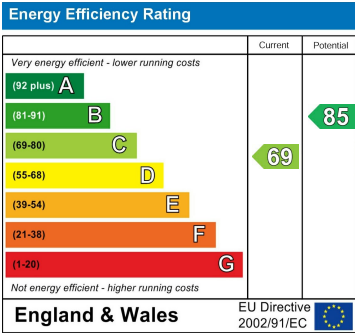
Outside, the property features a lovely garden, perfect for enjoying the fresh air or hosting summer barbecues. The surrounding area is known for its friendly neighbourhood and convenient amenities, including shops, schools, and parks, all within easy reach.

Deposit: £1326.00  
Council Tax Band: B  
Minimum Term: 12 Months





- Front External
- Hallway
- Lounge
- Kitchen Diner
- Landing
- Bedroom 1
- Bedroom 2
- Bedroom 3
- Bathroom
- Rear Exterior
- Store



Berkeley Shaw Estate Agents Limited.  
Company No. 0784754

Berkeley Shaw Real Estate Limited.  
Company No. 05206927

