

Property ref: 57130

Wokingham Road, Reading, RG6 7EH

£1,800 PCM

HASLAM'S
Lettings



An executive two bedroom, furnished home offering a high level of presentation, with excellent links to the M4, Earley railway station and business parks to the East of Reading town centre. Wokingham Borough Council tax band D.

Broadband/Mobile Info: Connections available. For an indication of specific speeds and supply of Broadband and Mobile, we advise applicants go to the Ofcom website Broadband and Mobile Coverage Checker.

Available 31/08/2026

- Two double bedrooms; Both with en-suites
- Appealing semi-detached home
- Good-sized garden; Downstairs W/C
- Modern fitted kitchen; Gas central heating
- Off-road parking; EPC rating C
- Furnished; Managed by HASLAM'S

*Fees For Assured Periodic Tenancies: when you rent a property from us you will be required to pay a sum equivalent to one weeks' rent for a holding deposit. Upon successful application, this amount will be off set against your first months' rent. You will also be required to pay a security deposit equivalent to 5 weeks' rent which will be held and protected in line with Deposit legislation. For more information about our fees please visit: www.haslams.net
Fees for all other tenancies (Non Housing Act Tenancies / Company Lets): when you rent a property from us we will charge you a one-off fee per property. This charge is the equivalent of 15 days of the monthly rental charge (+VAT) with a minimum fee of £450 (inc.VAT) up to a maximum of £650 (inc.VAT). Other fees may apply depending on your circumstances.

0118 960 1055

lettings@haslams.net www.haslams.net

Haslams Estate Agents Ltd, 159 Friar Street, Reading, Berkshire, RG1 1HE



Denotes restricted head height

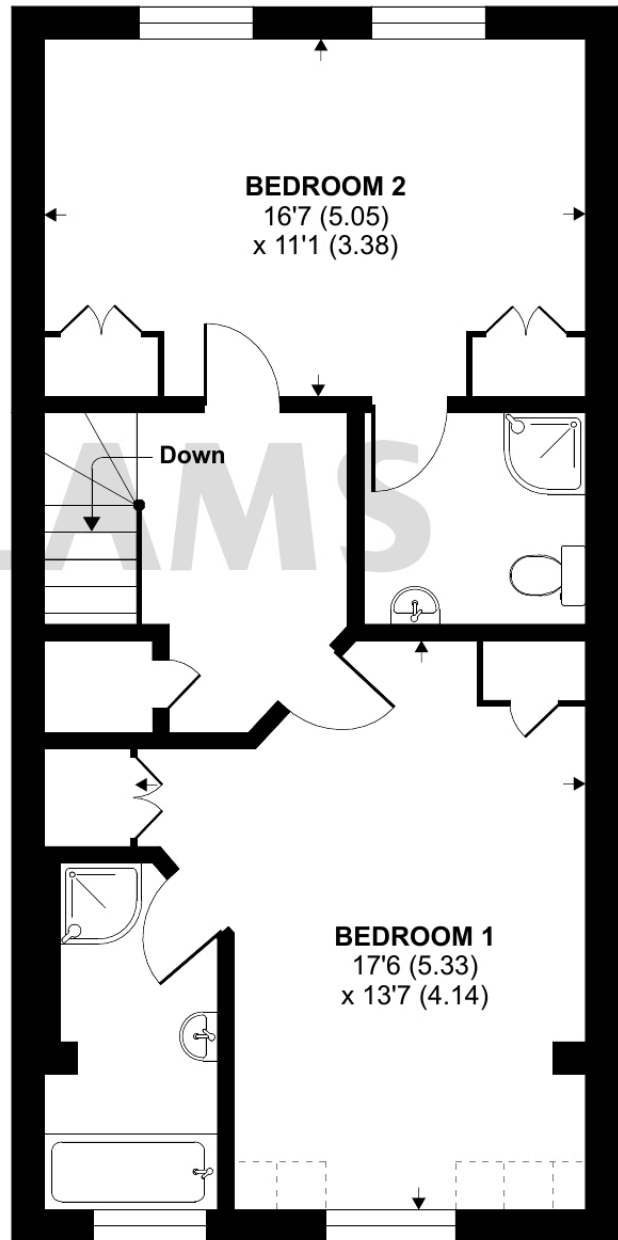
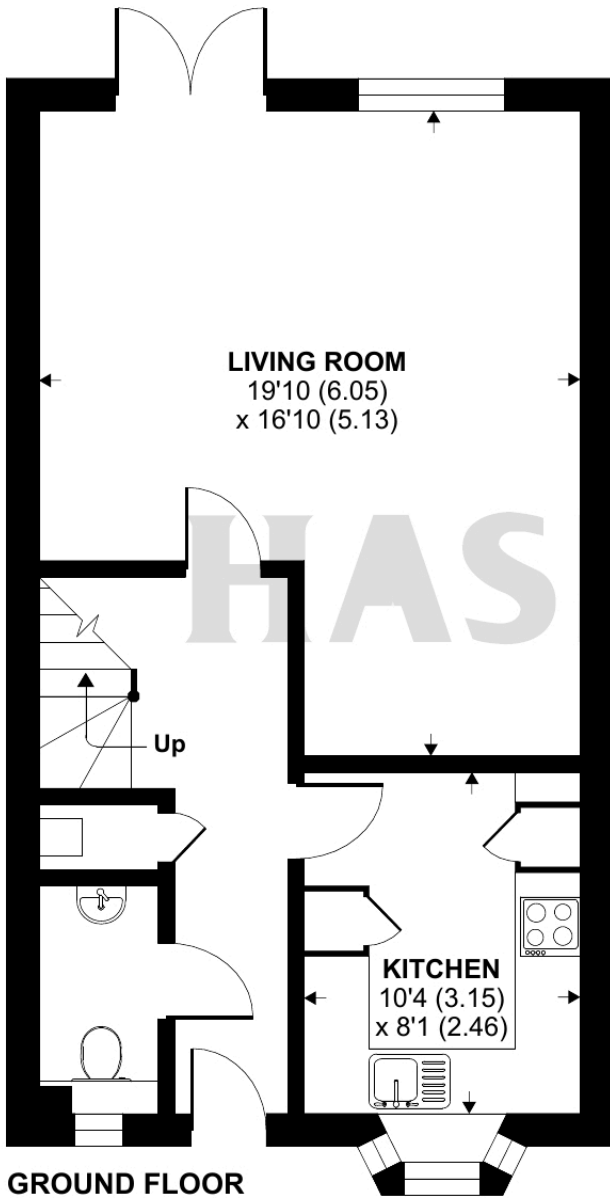
Earley, Reading, RG6

Approximate Area = 1107 sq ft / 102.8 sq m

Limited Use Area = 10 sq ft / 0.9 sq m

Total = 1117 sq ft / 103.7 sq m

For identification only - Not to scale



Floor plan produced in accordance with RICS Property Measurement Standards incorporating International Property Measurement Standards (IPMS2 Residential). © n1cheom 2023. Produced for Haslam's. REF: 975980