

OVER 60?

Secure this property
for up to **59% less!**



Guide Price

£425,000

Freehold

4x  1x  2x 

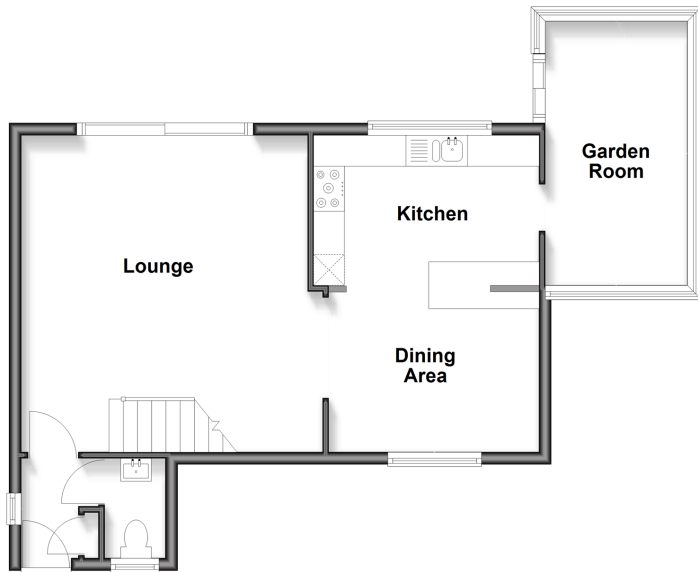
Aldington Close, Walderslade, Chatham,
Kent, ME5

Wards

Helping you move forwards

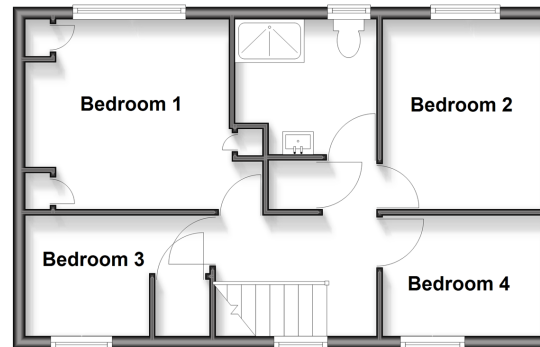
Ground Floor

Approx. 57.4 sq. metres (618.0 sq. feet)



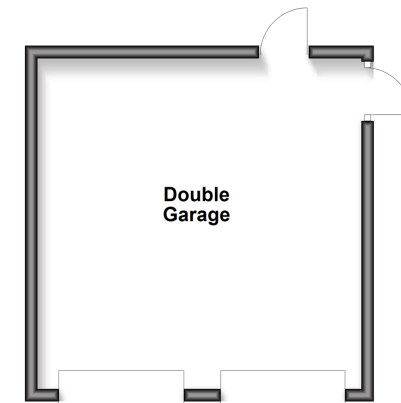
First Floor

Approx. 43.6 sq. metres (469.5 sq. feet)



Outbuilding

Approx. 28.3 sq. metres (304.1 sq. feet)



Accommodation

GROUND FLOOR

Entrance Porch

Entrance Hall

Cloakroom

Lounge : 16'9 x 16'0 (5.11m x 4.88m)

Dining Area : 11'2 x 8'8 (3.41m x 2.64m)

Kitchen : 12'1 x 8'0 (3.69m x 2.44m)

Garden Room : 14'1 x 7'6 (4.30m x 2.29m)

FIRST FLOOR

Landing

Bedroom 1 : 13'0 x 10'5 (3.97m x 3.18m)

Bedroom 2 : 10'4 x 8'6 (3.15m x 2.59m)

Bedroom 3 : 10'4 x 6'2 (3.15m x 1.88m)

Bedroom 4 : 8'6 x 6'4 (2.59m x 1.93m)

Shower Room : 7'7 x 7'6 (2.31m x 2.29m)

OUTBUILDING

Double Garage

OUTSIDE

Front Garden

Rear Garden



Main features

- Spacious bedrooms in a detached family property
- Double garage plus off road parking
- Bright garden room with views of the rear garden
- Well maintained front and back gardens
- Downstairs toilet and shower room upstairs



Nearest Schools

Primary Schools: Maundene School 0.5 miles, St Benedict's RC Primary 0.9 miles, Kingfisher Community Primary 1.0 miles

Secondary Schools: Holcombe Grammar School 1.3 miles,



Transport Information

Train Stations: Gillingham 3.8 miles, Halling 3.9 miles, Snodland 4.0 miles



Address

Aldington Close, Walderslade, Chatham, Kent, ME5



Directions

For directions to this property please contact us.



Wards
Helping you move forwards

Call Walderslade Branch 01634 865661 ■ wardsofkent.co.uk



■ Through a Homewise Home For Life Plan people aged 60+ can secure this property for up to 59% less, by purchasing a Lifetime Lease



12144791/20260328/ML/ALH