



Mill Street
Ilkeston

burchell
edwards



Property Description

END TERRACE HOME !! TWO DOUBLE BEDROOMS !! TWO RECEPTIONS !! CLOSE TO THE TOWN CENTRE !! WELL EQUIPPED KITCHEN !! We at Burchell Edwards are delighted to offer to the market this charming end terrace home that is located close to the town centre as is ready for a new owner to love.

Located close to the town centre all major supermarkets and all of the fantastic transport and road links we have this charming end terrace home.

The home comprises of living room, dining room and well equipped kitchen to the ground floor. The first floor holds the two double bedrooms and the family bathroom.

To the rear is the small but private garden and there is plenty of non-permit on-street parking to the front. We feel what this home has to offer and the fantastic location really makes this a must see so please call Burchell Edwards today to arrange your viewing.

To The Front

Having non-permit on-street parking available. A UPVC front door opens directly into the living room.

Living Room

Having a double-glazed front aspect window with laminate flooring and an attractive feature fireplace with a gas fire.

Dining Room

Having a double-glazed rear aspect door to the rear garden, with laminate flooring and a gas feature fireplace. Leading through to the galley Kitchen. Staircase entrance to the first floor.

Kitchen

Having two double-glazed side aspect windows. Kitchen fitted with a selection of wall and base units with a stainless-steel sink and drainer, with space for a washing machine, freestanding cooker and fridge freezer.

Bedroom One

Having a front aspect double-glazed window with laminate flooring.

Bedroom Two

Having a rear aspect double-glazed window with laminate flooring.

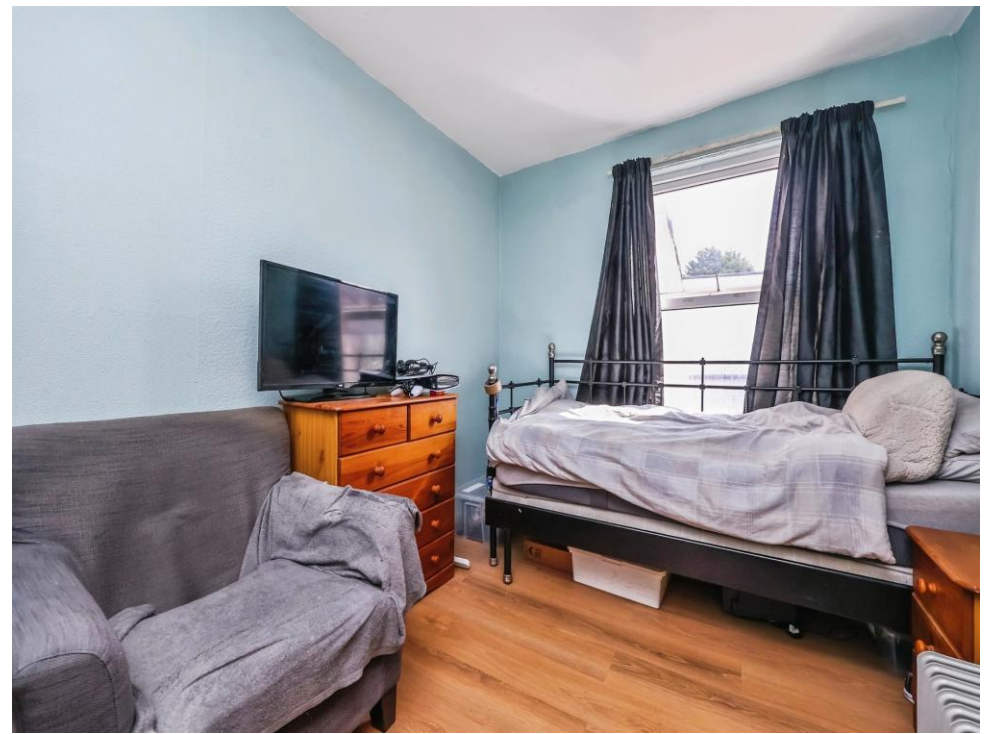
Bathroom

Having a rear aspect double-glazed window, Stylish bathroom suite includes bath with shower mixer taps, a low-level WC and a vanity handwash basin with tiled splashbacks and laminate flooring

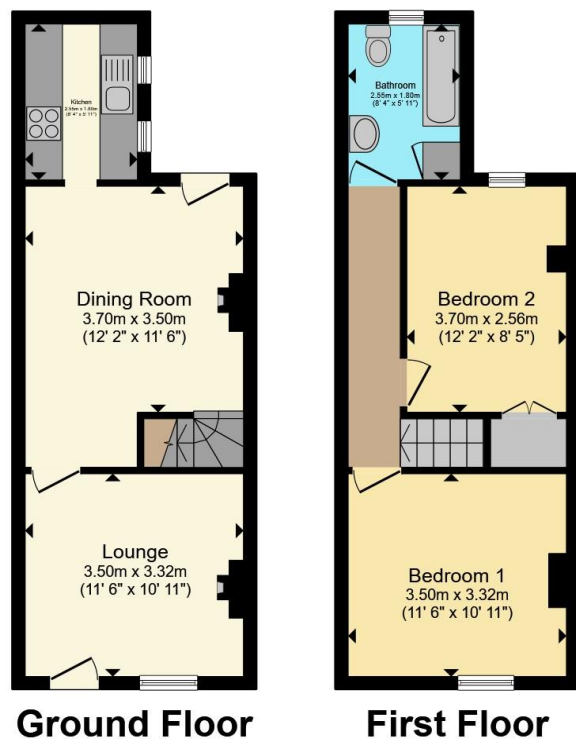
To The Rear

Enclosed rear yard with two versatile outbuildings with power.









Total floor area 65.7 m² (707 sq.ft.) approx

This floor plan is for illustrative purposes only. It is not drawn to scale. Any measurements, floor areas (including any total floor area), openings and orientation are approximate. No details are guaranteed, they cannot be relied upon for any purpose and they do not form part of any agreement. No liability is taken for any error, omission or misstatement. A party must rely upon its own inspection(s). Powered by www.propertybox.io



To view this property please contact Burchell Edwards on

T 01159 327232
E ilkeston@burchelledwards.co.uk

21 Bath Street
 ILKESTON DE7 8AH

EPC Rating: E Council Tax
 Band: A

Tenure: Freehold

check out more properties at burchelledwards.co.uk



1. MONEY LAUNDERING REGULATIONS Intending purchasers will be asked to produce identification documentation at a later stage and we would ask for your co-operation in order that there will be no delay in agreeing the sale. 2. These particulars do not constitute part or all of an offer or contract. 3. The measurements indicated are supplied for guidance only and as such must be considered incorrect. Potential buyers are advised to recheck measurements before committing to any expense. 4. We have not tested any apparatus, equipment, fixtures, fittings or services and it is in the buyers interest to check the working condition of any appliances.

Burchell Edwards is a trading name of Connells Residential which is registered in England and Wales under company number 1489613, Registered Office is Cumbria House, 16-20 Hockliffe Street, Leighton Buzzard, Bedfordshire, LU7 1GN. VAT Registration Number is 500 2481 05.

See all our properties at www.burchelledwards.co.uk | www.rightmove.co.uk | www.zoopla.co.uk

Property Ref: IST207973 - 0002