



19 Middle Furlong, Didcot – OX11 7SJ

£0 Freehold

4 BEDROOMS • DETACHED • 3 SEPARATE RECEPTION ROOMS • DOWNSTAIRS WC • ENSUITE TO MAIN BEDROOM • SOUTHERLY FACING GARDEN • EPC - C • GARAGE WITH DRIVEWAY PARKING • CLOSE TO LOCAL AMENITIES • CLOSE TO TRANSPORT LINKS

01256 321777

www.thepropertyexplorer.co.uk

the property
explorer

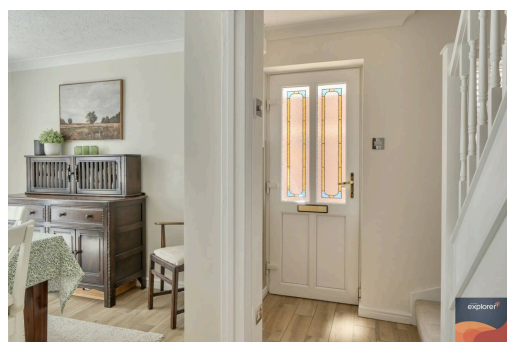
Situated in the highly sought after Ladygrove development, this well presented four bedroom home offers spacious and versatile accommodation ideal for modern family living. The ground floor features a generous sitting room with bay window, a well appointed kitchen opening into the dining room, and a bright conservatory overlooking the rear garden, creating an excellent space for both everyday living and entertaining. A downstairs cloakroom adds further convenience. Upstairs, the property offers four bedrooms, including a well proportioned principal bedroom with en suite, alongside a family bathroom serving the remaining bedrooms. Externally, the home benefits from a private rear garden measuring approximately 60ft, together with a detached garage and driveway parking.

Council Tax band: E

Tenure: Freehold



- › 4 BEDROOMS
- › DETACHED
- › 3 SEPARATE RECEPTION ROOMS
- › DOWNSTAIRS WC
- › ENSUITE TO MAIN BEDROOM
- › SOUTHERLY FACING GARDEN
- › EPC - C
- › GARAGE WITH DRIVEWAY PARKING
- › CLOSE TO LOCAL AMENITIES
- › CLOSE TO TRANSPORT LINKS





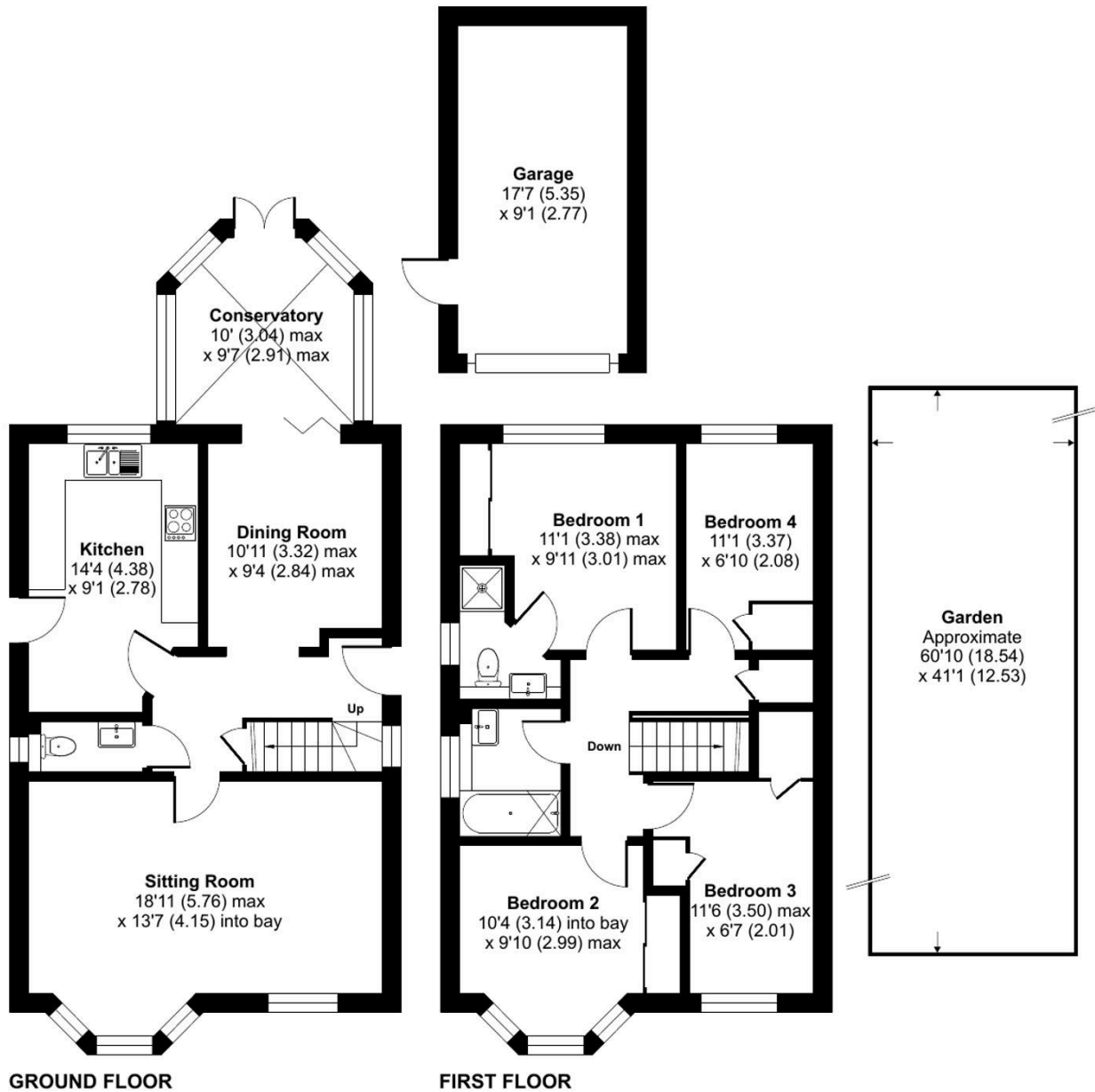
Middle Furlong, Didcot, OX11

Approximate Area = 1232 sq ft / 114.4 sq m

Garage = 160 sq ft / 14.9 sq m

Total = 1392 sq ft / 129.3 sq m

For identification only - Not to scale



Floor plan produced in accordance with RICS Property Measurement 2nd Edition, Incorporating International Property Measurement Standards (IPMS2 Residential). © nchecom 2026. Produced for Property Explorer. REF1463373