



# SYMON SMITH

RESIDENTIAL & COMMERCIAL ESTATE AGENTS  
AND PROPERTY MANAGEMENT

240 Stamford Hill, London, N16 6TT

Sales: 020 8802 0025  
sales@symonsmith.co.uk  
Management: 020 8802 0022  
management@symonsmith.co.uk



## 274 Craven Park Road, London, N15 6AE

### Offers In Excess Of £800,000

Nestled on Craven Park Road in London, this charming four-bedroom town house offers a delightful blend of comfort and convenience. Spanning an impressive 1,170 square feet, the property features a spacious reception room that serves as the perfect gathering space for family and friends.

The four well-appointed bedrooms include a master suite with an en suite bathroom, providing a private retreat for relaxation. The additional bathroom ensures ample facilities for the household, making morning routines a breeze.

One of the standout features of this home is its low-maintenance garden, ideal for those who wish to enjoy outdoor space without the burden of extensive upkeep. This area is perfect for summer barbecues or simply unwinding after a long day.

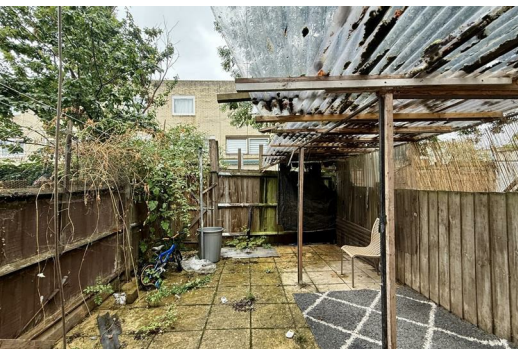
Situated close to local amenities, residents will find everything they need within easy reach, from shops to cafes. For those who enjoy the outdoors, Springfield Park is just a short walk away, offering beautiful green spaces for

- Four Spacious bedrooms
- Front and Rear Garden
- EPC Rating C
- Large kitchen/ dining room
- Short Walk to Springhill park
- Council Tax Band D
- Ground floor WC and upstairs bathroom
- Near to local schools and shops
- Freehold

Craven Park Road, London, N15 6UE



Total Area: 108.7 m<sup>2</sup> ... 1170 ft<sup>2</sup> (excluding porch, garden)  
All measurements are approximate and for display purposes only.



[WWW.SYMONSMITH.CO.UK](http://WWW.SYMONSMITH.CO.UK)

Symon Smith Ltd, registered in England 110 Lancaster Road, New Barnet, Herts EN4 8AL No. 3600107 VAT No. 247 764 331