



# RIDGEWAY

## RESIDENTIAL SERVICES



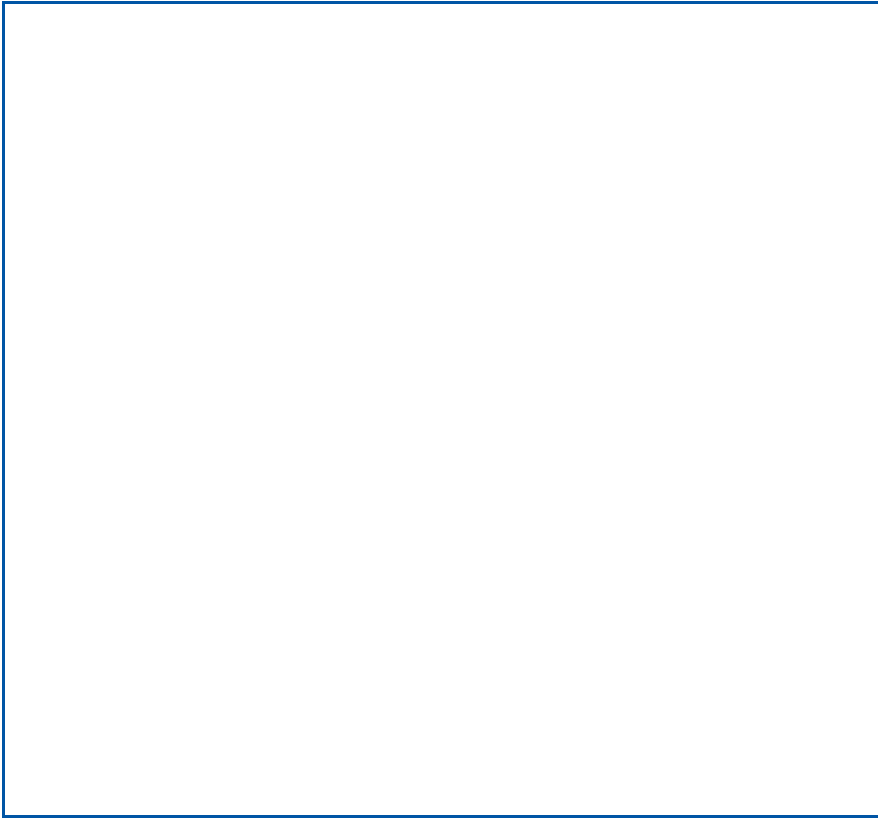
### 5 The Square

, Lymm, WA13 0HX

£1,200 Per Month



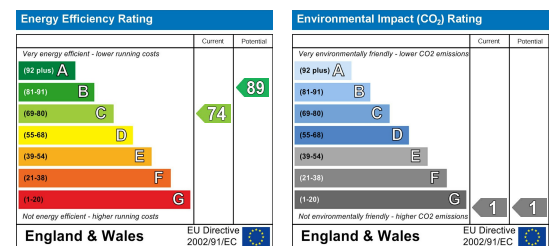
## Floor Plan



## Area Map



## Energy Efficiency Graph

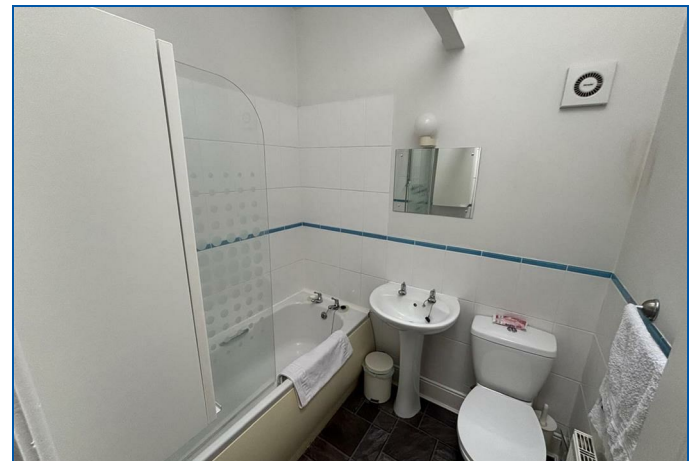


## Viewing

Please contact us on 01925 756931 if you wish to arrange a viewing appointment for this property or require further information.

- Two double bedrooms
- Comfortable lounge & Spacious dining kitchen
- Modern Family Bathroom
- Off Road Parking
- Sought-after village centre location
- Overlooking the Bridgewater Canal
- Entrance porch
- Front Garden
- Unfurnished
- Available from 28th July 2026

A well presented two bedroom cottage situated in heart of the village centre overlooking the Bridgewater canal. The property comprises of Entrance Porch, Lounge, Dining Kitchen, Two double bedrooms and a bathroom. A garden to the front and off road parking. Unfurnished. Available 28/06/2025.



These particulars, whilst believed to be accurate are set out as a general outline only for guidance and do not constitute any part of an offer or contract. Intending purchasers should not rely on them as statements of representation of fact, but must satisfy themselves by inspection or otherwise as to their accuracy. No person in this firm's employment has the authority to make or give any representation or warranty in respect of the property.