

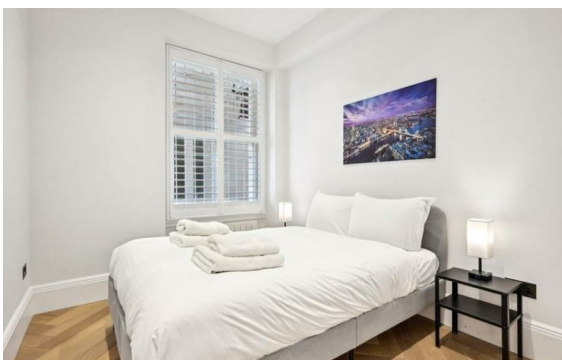


**Gloucester Place, Marylebone, London, NW1**

Rent £1,269 Per Month

3 Bed | 1 Bath | 1 Reception

*Please call us on 020 7724 2233 or email us [info@newingtonstates.com](mailto:info@newingtonstates.com) to book a viewing.*



A well-presented three-bedroom apartment combining contemporary interiors with practical living space in a sought-after central London location. The property features a bright reception room, a separate modern kitchen, and three well-proportioned bedrooms. The bathroom includes a stylish wet room, while large windows provide excellent natural light throughout. The layout is practical and ideal for families or professional sharers.

Set within a period mansion block, the apartment is ideally located close to Baker Street Station and within easy reach of Marylebone Station and Bond Street Station. The amenities of Marylebone High Street, Oxford Street, and Regent's Park are all nearby.

EPC Rating: D

## Energy Efficiency Rating: D

Agents Note: Whilst every care has been taken to prepare these particulars, they are for guidance purposes only. All measurements are approximate and are for general guidance purposes only and whilst every care has been taken to ensure their accuracy, they should not be relied upon and potential buyers/tenants are advised to recheck the measurements.

**NEWINGTON**  
— ESTATES —

60 Upper Montagu Street

London

W1H 1SN

020 7724 2233

[info@newingtonestates.com](mailto:info@newingtonestates.com)

<http://www.newingtonestates.com>