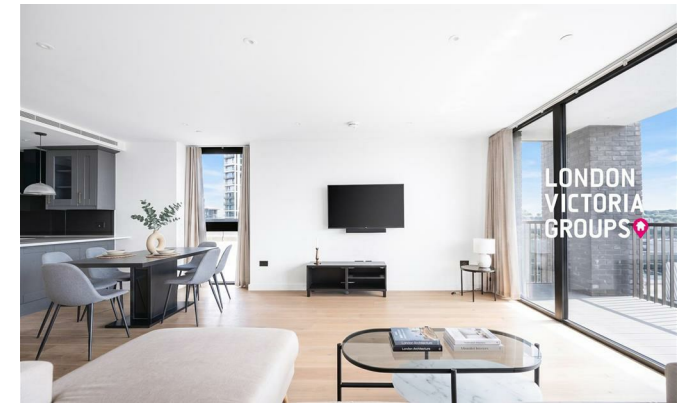


**LONDON  
VICTORIA  
GROUPS** 



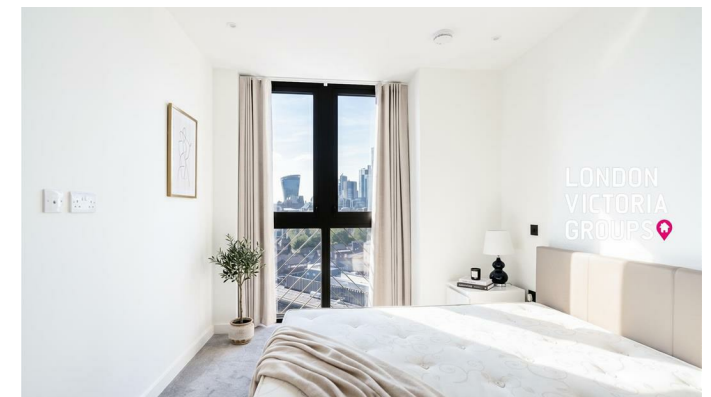
## **Emery Wharf, 1 Emery Way**

, London E1W 2AS

- Three-bedroom, three-bathroom apartment
- Fully integrated kitchen is fitted with premium appliances
- Fully equipped residents' gymnasium
- Residents' lounge and communal spaces
- EPC-B
- Open-plan living and dining area
- 24-hour concierge service
- Swimming pool, sauna, and spa facilities
- Tower Hill & Aldgate East Station
- CTB-H

**£4,800 Per Month**

Local Authority **Tower Hamlets**  
Council Tax Band **H**  
EPC Rating



**London Office Office**

Spaces Victoria, 25 Wilton Road, Pimlico,  
London, SW1V 1LW

**Contact**

020 3084 3094  
XL@londonvictoriagroups.co.uk  
www.londonvictoriagroups.co.uk

Agents Note: Whilst every care has been taken to prepare these particulars, they are for guidance purposes only. All measurements are approximate and for general guidance purposes only and whilst every care has been taken to ensure accuracy, they should not be relied upon and potential buyers/tenants are advised to recheck the measurements.