



Edge Hill, SW19

£375,000

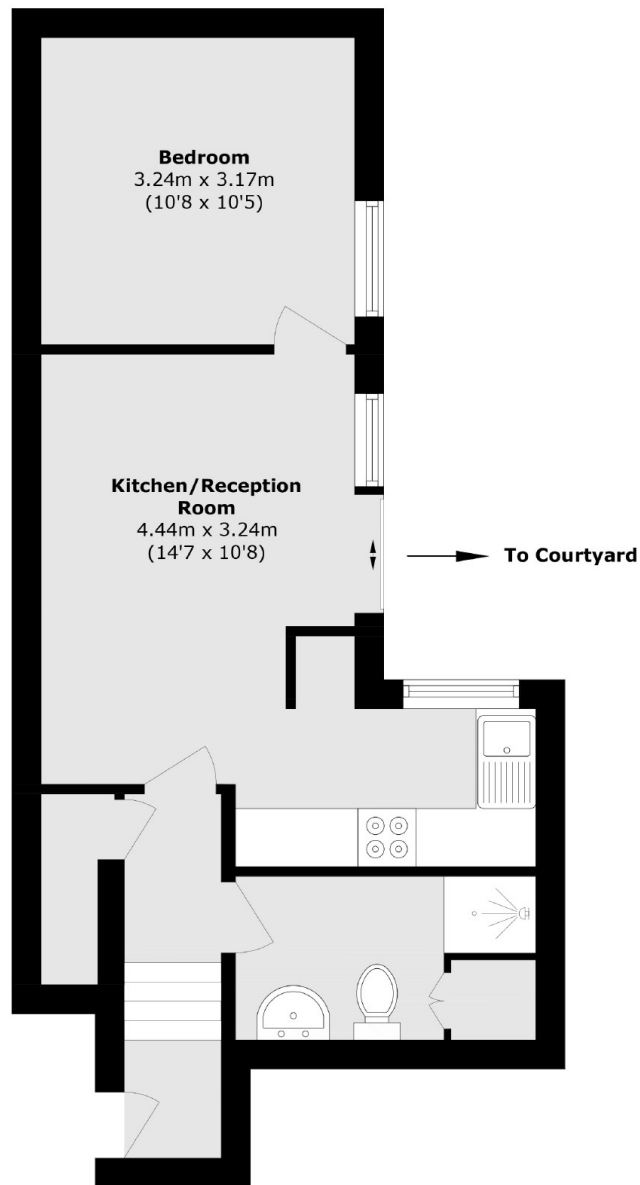
A one double bedroom Victorian conversion apartment located within a detached building, fully taken back to brick and reconstructed within the last six years. There is a private courtyard garden.

Located on Edge Hill, one of Wimbledon's most highly regarded roads, close to Wimbledon Village and Common, as well as the town centre with overground and District Line, restaurants and bars.

Features

- Over 40 Square Meters
- Victorian Conversion
- Back To Brick Construction
- Luxury Finish Throughout
- Wimbledon Slopes Location
- No Onward Chain

Edge Hill, London, SW19



Total area (approx.): 40.7 sq. m (438.0 sq. ft)