



Denmark Hill | London | SE5 8EB

Share of Freehold

£480,000

- Share of freehold
- Open plan living
- Period property
- Garage
- Off street parking
- Communal gardens
- Excellent transport links
- Immaculate condition
- Ruskin Park
- Herne Hill & Dulwich Village

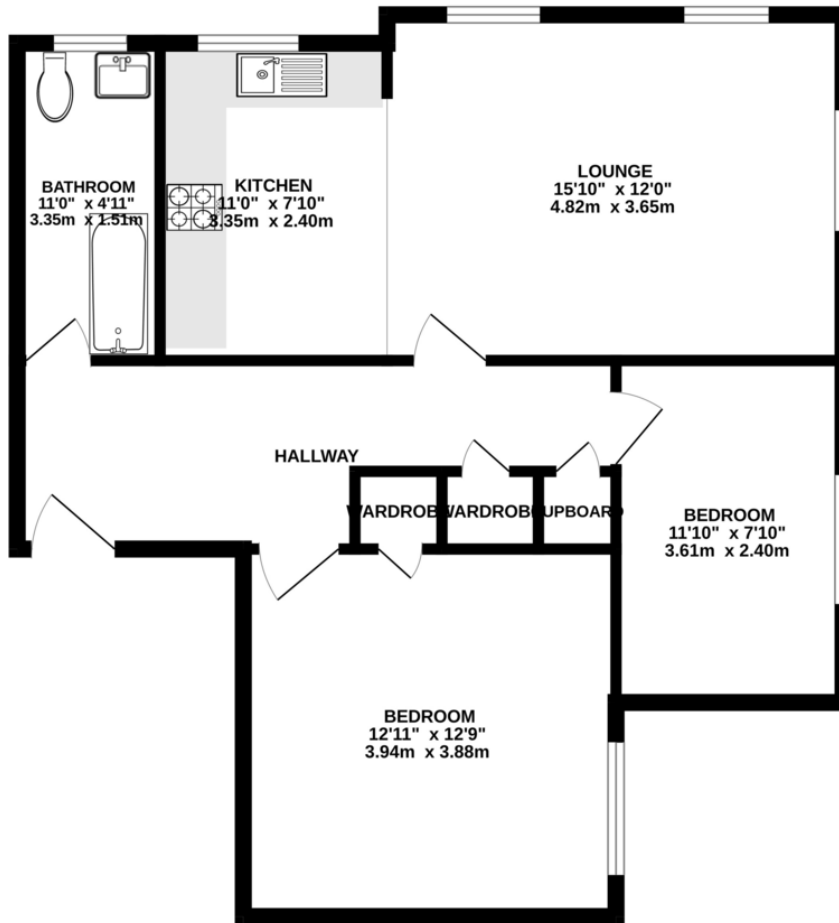


This immaculate two double bedroom property has been lovingly restored and renovated to a high standard; the present owner has created a bright and spacious open plan living space with modern kitchen whilst retaining the original features and working fireplace. Located at the top of Denmark Hill, near Ruskin Park, Rutland Court is a sought-after period mansion block, architectural and period feature continue throughout the building including a fully refurbished brass passenger lift, off street parking, a garage, basement storage facilities & communal gardens. The desirable location offers easy access to Dulwich Village, Herne Hill & Camberwell.



%epcGraph_c_1_300%

GROUND FLOOR
724 sq.ft. (67.2 sq.m.) approx.



TOTAL FLOOR AREA : 724 sq.ft. (67.2 sq.m.) approx.

Whilst every attempt has been made to ensure the accuracy of the floorplan contained here, measurements of doors, windows, rooms and any other items are approximate and no responsibility is taken for any error, omission or mis-statement. This plan is for illustrative purposes only and should be used as such by any prospective purchaser. The services, systems and appliances shown have not been tested and no guarantee as to their operability or efficiency can be given.
Made with Metropix ©2025

Viewing Arrangements

Strictly by appointment

Contact Details

121 Denmark Hill

London

SE5 8EN

www.urbanvillagehomes.co.uk

sales@urbanvillagehomes.com

020 3519 9121

Agents Note: Whilst every care has been taken to prepare these sales particulars, they are for guidance purposes only. All measurements are approximate and for general guidance purposes only and whilst every care has been taken to ensure their accuracy, they should not be relied upon and potential buyers are advised to recheck the measurements