



Guide Price
£325,000

Freehold

2x  1x  1x 

**Alison Crescent,
Whitfield, Dover, Kent,
CT16**

OVER 60?

Secure this property
for up to **59% less!**

Wards
Helping you move forwards



Main features

- An ideal property to down size to
- Ample driveway parking & garage, ideal for when guests descend
- Large flat rear garden, perfect during the summer months
- No onward chain complications
- Bags of potential to extend (subject to the necessary planning consent)

Accommodation

GROUND FLOOR

Entrance Porch
 Entrance Hallway
 Bedroom 1 : 15'10 x 13'4 (4.83m x 4.07m)
 Bedroom 2 : 11'11 x 10'10 (3.63m x 3.30m)
 Lounge Area: 13'10 x 9'10 (4.22m x 3.00m)
 Orangery: 12'9 x 9'5 (3.89m x 2.87m)
 Kitchen : 10'11 x 9'10 (3.33m x 3.00m)
 Shower Room

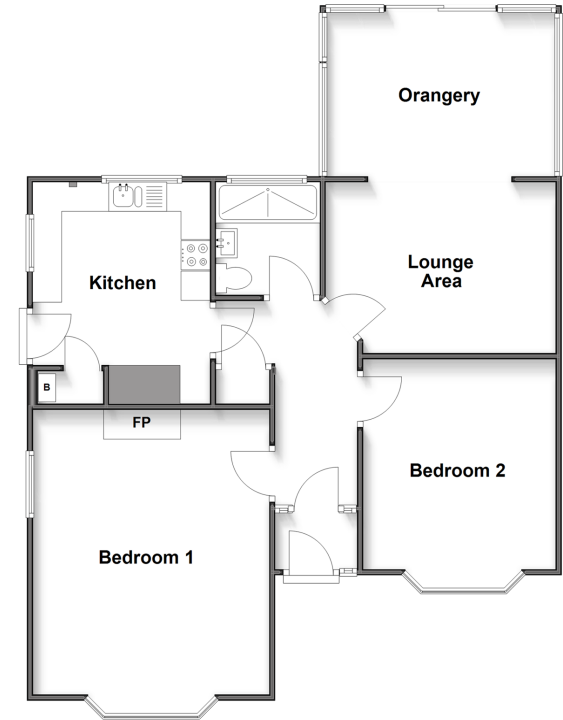
OUTBUILDING

Garage

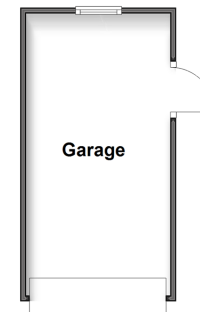
OUTSIDE

Front Garden
 Rear Garden
 Driveway Parking

Ground Floor
 Approx. 80.5 sq. metres (866.2 sq. feet)



Outbuilding
 Approx. 12.0 sq. metres (129.2 sq. feet)



Call Dover - 01304 214876 ■ wardsof Kent.co.uk

- Legal advice should be taken to verify fixtures/fittings, planning, alterations and/or lease details
- Appliances & services are untested, dimensions are approximate and floor plans are not to scale
- Through a Homewise Home For Life Plan people aged 60+ can secure this property for up to 59% less, by purchasing a Lifetime Lease.