



The Hermitage, TW10

£550,000

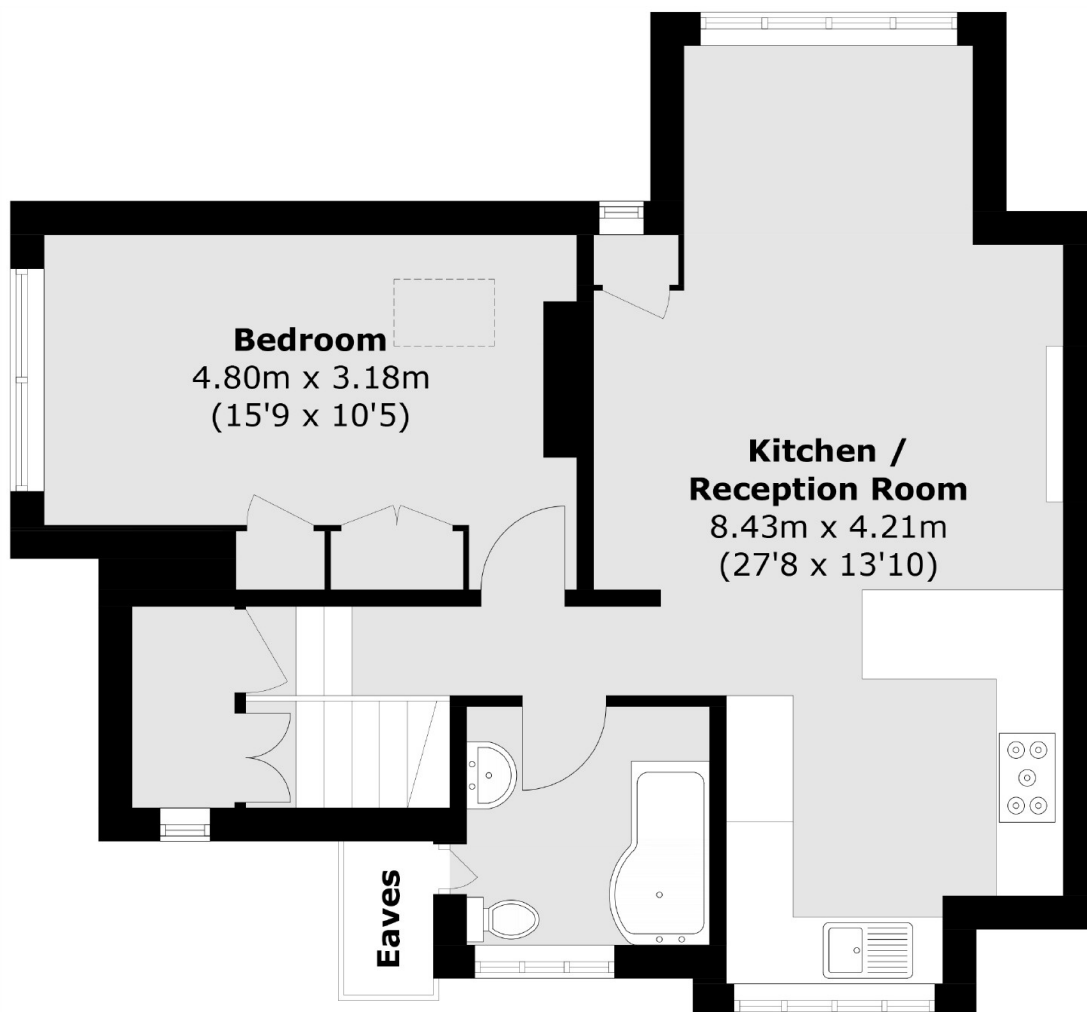
A stunning Edwardian conversion second floor apartment situated on a highly desirable residential road within the heart of Richmond. The property comprises a stairway with eaves storage, one large double bedroom with built-in wardrobe, a modern bathroom and large, bright open plan kitchen/dining/reception room. The property is also offered to the market with a Share of Freehold and no onward chain.

Located on The Hermitage, the property is well located for the amenities on Richmond Hill, with Richmond Park, Richmond Riverside and Richmond town centre all being close by. Richmond train station offers access to and from London by rail or tube via the District line

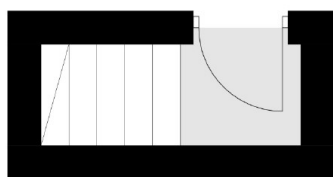
Features

- Triple Aspect
- Central Richmond
- Modern Fitted Kitchen
- Period Property
- Share Of Freehold
- No Onward Chain

The Hermitage, Richmond, TW10



First Floor



Ground Floor

Total area (approx.): 58.4 sq. m (628.6 sq. ft)
(Excluding Eaves)