



7 Rescue Way

| LE65 1UR | Offers In The Region Of £160,000

ROYSTON  
& LUND



- Guide Price £155,000 to £160,000
- Open Plan Kitchen/Diner/Lounge with Fireplace
- Designated Parking Space
- Annual Management Fee Applies
- Council Tax Band - A
- Two Bedroom Second Floor Loft Apartment
- Bathroom
- Leasehold - 104 years remaining
- EPC Rating - C







Guide Price £155,000 to £160,000

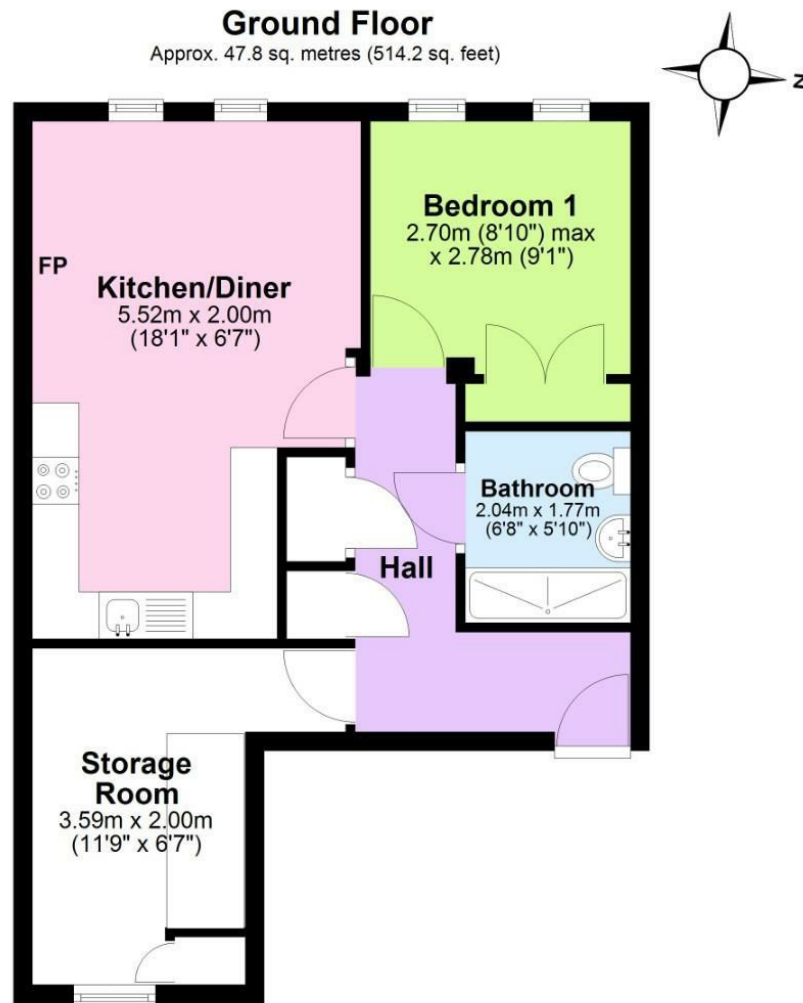
Situated a short walk to the Bath Grounds in Ashby-De-La-Zouch, this top floor two bedroom apartment is perfectly located to the amenities that the town offers. One of just seven apartments; a short drive to the M42 North & South.



At its heart is a welcoming kitchen diner, fitted with a range of wall and base units, a gas hob, oven and fireplace. A separate storage room provides useful additional space, while the bathroom is fitted with a shower over the bath. There are two bedrooms, one double and the other a single.

Outside there is a dedicated parking space for the apartment and visitor parking along with some communal garden area to the front.

\*An annual service charge applies\*



Total area: approx. 47.8 sq. metres (514.2 sq. feet)

These particulars, whilst believed to be accurate are set out as a general outline only for guidance and do not constitute any part of an offer or contract. Intending purchasers should not rely on them as statements of representation of fact, but must satisfy themselves by inspection or otherwise as to their accuracy. No person in this firm's employment has the authority to make or give any representation or warranty in respect of the property.



**EPC**

Energy Efficiency Rating		
	Current	Potential
Very energy efficient - lower running costs		
(92 plus) <b>A</b>		
(81-91) <b>B</b>		
(69-80) <b>C</b>	<b>79</b>	<b>79</b>
(55-68) <b>D</b>		
(39-54) <b>E</b>		
(21-38) <b>F</b>		
(1-20) <b>G</b>		
Not energy efficient - higher running costs		
<b>England &amp; Wales</b> EU Directive 2002/91/EC		
Environmental Impact (CO <sub>2</sub> ) Rating		
	Current	Potential
Very environmentally friendly - lower CO <sub>2</sub> emissions		
(92 plus) <b>A</b>		
(81-91) <b>B</b>		
(69-80) <b>C</b>		
(55-68) <b>D</b>		
(39-54) <b>E</b>		
(21-38) <b>F</b>		
(1-20) <b>G</b>		
Not environmentally friendly - higher CO <sub>2</sub> emissions		
<b>England &amp; Wales</b> EU Directive 2002/91/EC		

**ROYSTON  
& LUND**