



# VILLAGE ESTATES



• EST.1993 •

93 Main Road, Sidcup, Kent DA14 6ND

Tel: 0208 302 1002

www.village-estates.com

Email: sidcup@village-estates.com



**MODERNISED TO AN EXCEPTIONAL STANDARD**

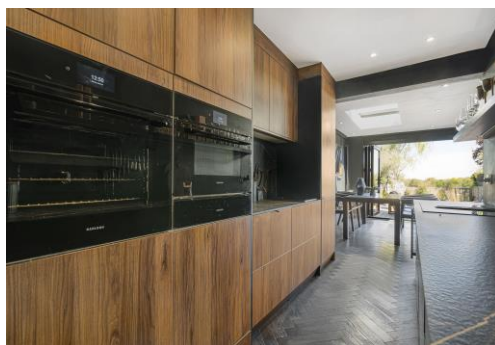
**SPACIOUS LIVING ROOM**

**STUNNING GARDEN WITH VIEWS**

**LARGE DRIVEWAY FOR MULTIPLE VEHICLES**

**EXTENDED KITCHEN / DINER**

**RARELY AVAILABLE LOCATION**



**195 Maidstone Road  
Sidcup, DA14 5AN**

**Guide Price £550,000-  
£575,000**

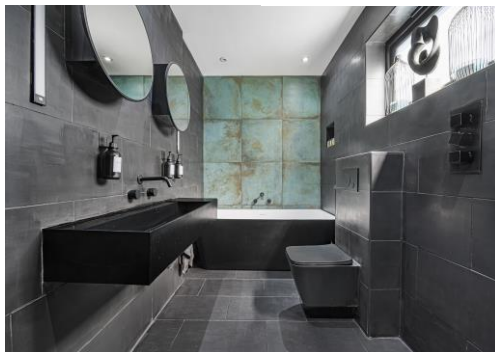
**BEAUTIFULLY MODERNISED SEMI-DETACHED HOME WITH STUNNING VIEWS!** Village Estates are pleased to present this exceptional two-bedroom semi-detached home, finished to an impeccable standard throughout. The property offers generous and well-balanced living space, featuring a spacious separate living room alongside an extended open-plan kitchen and dining area, ideal for both entertaining guests and relaxing day-to-day living. The contemporary bathroom is finished to a high specification, providing a stylish and comfortable space for new owners. Both bedrooms are well-proportioned, offering ample space for living and storage. Externally, the home truly excels with its beautifully landscaped garden. Thoughtfully designed, it features a large patio area, a well-maintained lawn, and multiple seating areas, perfect for enjoying outdoor living while taking in the peaceful views over the surrounding fields. This is a superb home that must be seen to be fully appreciated.

**EPC RATING: D**

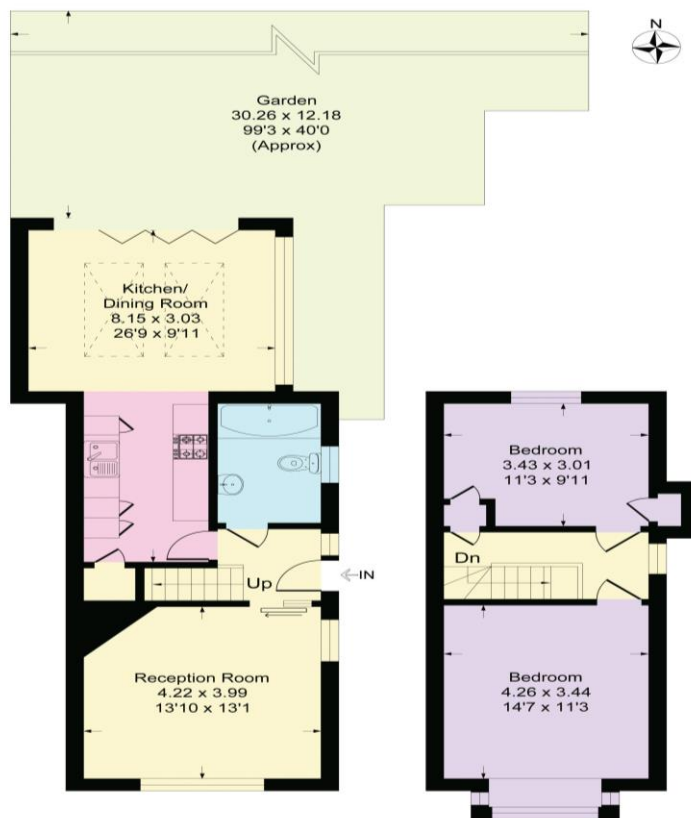
**COUNCIL TAX BAND: D**

**TENURE: Freehold**

**LEASE TERM: Not Applicable**



Approximate Gross Internal Area 88.0 sq m / 943 sq ft



**CONSUMER PROTECTION FROM UNFAIR TRADING REGULATIONS 2008**

Please note that any services, heating system or appliances have not been tested, and no warranty can be given or implied as to their working order. You are advised to obtain verification from your solicitor or surveyor. References to the tenure of a property are based on information supplied by the seller. We have not had sight of the title documents and a buyer is advised to obtain verification from their solicitor. Items shown in photographs are not included unless specifically mentioned within the sales particulars, but may be available by separate negotiation. Whilst every attempt has been made to ensure the accuracy of the floor plan contained here, measurements of doors, windows, rooms and any other items are approximate and no responsibility is taken for any error, omission, or mis-statement. We advise you to book an appointment to view before embarking on any journey to see a property, and check its availability. The accuracy of these details are not guaranteed and they do not form part of the contract.