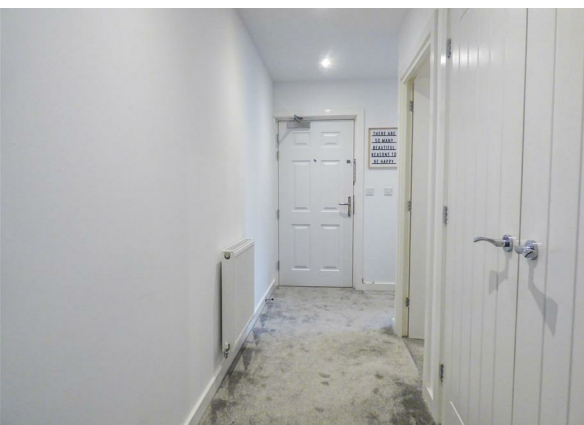
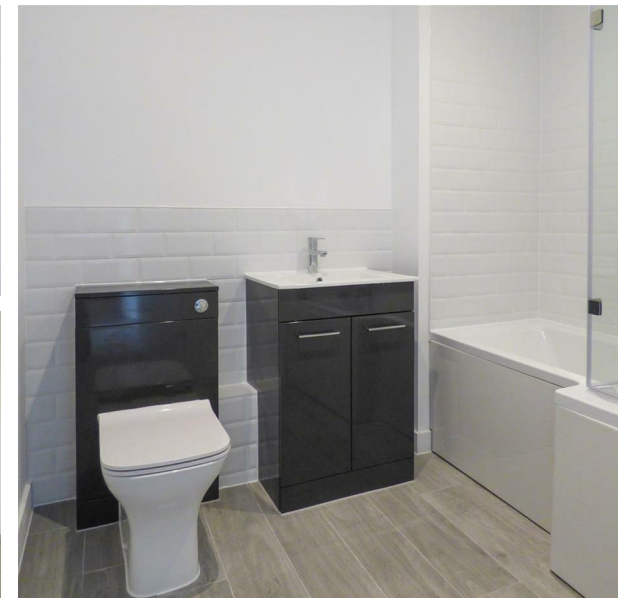


Flat 17, London Road, Grays, Essex, RM20 4AD

£1,750

Council Tax Band: B



Open House is delighted to present this contemporary two-bedroom apartment, soon available for occupancy. Designed with modern living in mind, this property is an ideal choice for young professionals, couples, or small families seeking comfort, convenience, and style.

A Contemporary Living Space

Step into a bright and spacious open-plan lounge and kitchen, thoughtfully designed to create a welcoming environment perfect for relaxing or entertaining. A well-positioned balcony extends the living area, drawing in natural light and offering a peaceful spot to unwind.

Stylish & Practical Interiors

The apartment features two generously sized double bedrooms, including a master bedroom with an en-suite, ensuring privacy and comfort. A sleek family bathroom complements the modern interior, providing a fresh and functional space for everyday living.

Comfort All Year Round

With double glazing and central heating throughout, the property ensures a warm and energy-efficient home, whatever the season.

Fully Equipped Kitchen

The modern fitted kitchen comes complete with essential appliances, including a fridge-freezer, oven with hob, extractor fan, and washing machine—ready for immediate use.

Added Convenience

An allocated parking space is included, offering secure and hassle-free parking.

Excellent Transport Links



Open House Brentwood



Energy Efficiency Rating		
	Current	Potential
Very energy efficient - lower running costs		
(92 plus) A	88	88
(81-91) B		
(69-80) C		
(55-68) D		
(39-54) E		
(21-38) F		
(1-20) G		
Not energy efficient - higher running costs		
England & Wales		EU Directive 2002/91/EC 