



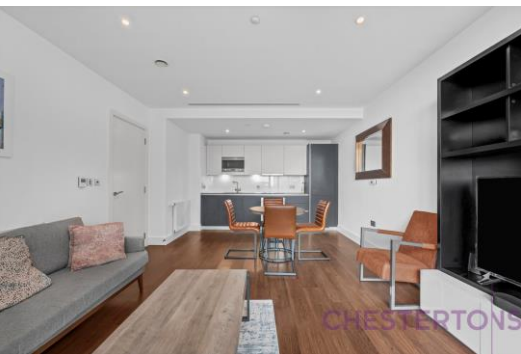
Maine Tower

9 Harbour Way, E14

£3,100 per month
(£715.38 per week)

Maine Tower with open-plan living, floor-to-ceiling windows, and skyline views. Includes a spacious bedroom, sleek bathroom, and excellent Canary Wharf transport links.

CHESTERTONS



Maine Tower

9 Harbour Way, E14

- Modern 12th-floor apartment in Maine Tower
- Bright open-plan living area
- Floor-to-ceiling windows with skyline views
- Spacious bedroom and sleek bathroom
- Excellent transport links in Canary Wharf

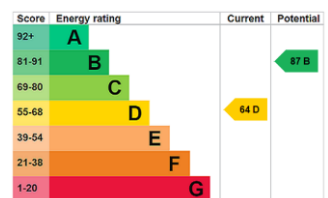


Maine Tower, this well-presented apartment offers contemporary living in the heart of Canary Wharf. The property features a bright open-plan living and kitchen area with floor-to-ceiling windows, allowing for plenty of natural light and impressive views across the London skyline.

The apartment includes a spacious bedroom with built-in storage, a sleek modern bathroom, and high-quality finishes throughout. Residents benefit from access to premium amenities such as a 24-hour concierge, residents' gym, and secure entry.

Located at 9 Harbour Way, the property is just moments from

Minimum Term: 12 months
Deposit Required: £3,576.92
Local Authority: Tower Hamlets
Council Tax Band: F
EPC Rating: D
Furnished



Chestertons Canary Wharf & Greenwich Lettings

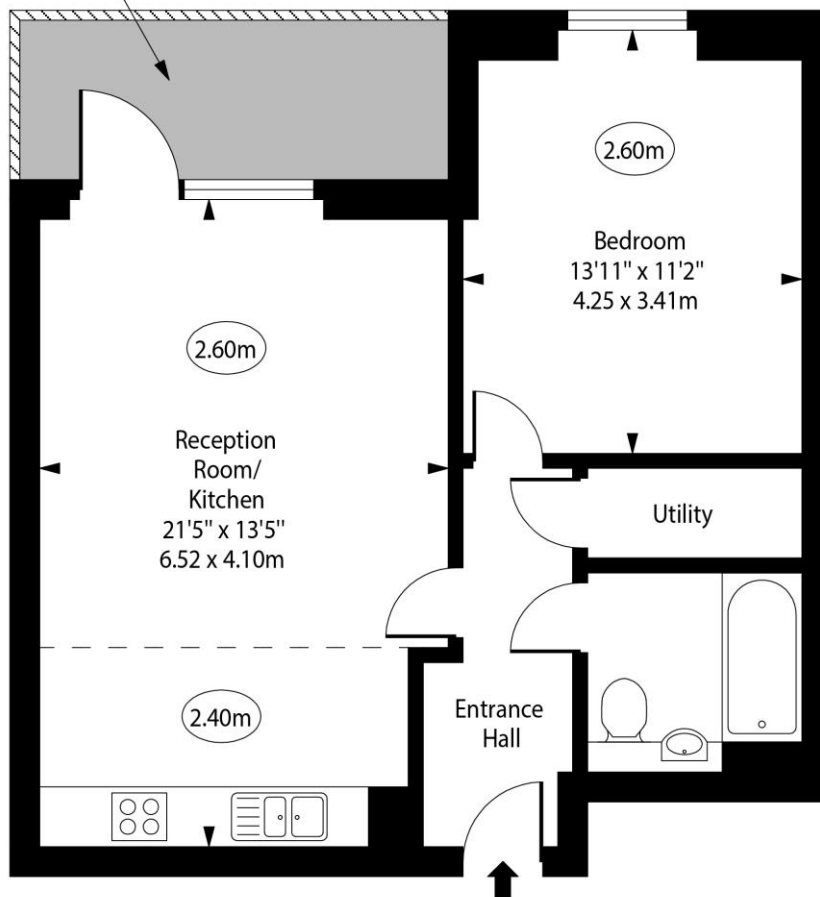
Harbour Island
 28 Harbour Exchange Square
 Canary Wharf & Docklands
 London
 E14 9GE
 canarywharflettingsusers@chestertons.co.uk
 02075108310

Additional tenant charges apply (fees apply to non-AST tenancies only)
 Tenancy Agreement Fee: £300
 References per Tenant/Guarantor: £60
 Inventory check (approx. £100 – £250 inc. VAT)
chestertons.co.uk/property-to-rent/applicable-fees

Maine Tower, Harbour Way, E14

Balcony
13'10" x 5'11"
4.22 x 1.56m
(approximate)

○ - Ceiling Height



Twelfth Floor

Approx Gross Internal Area 565 Sq Ft - 52.49 Sq M

Every attempt has been made to ensure the accuracy of the floor plan shown. However, all measurements, fixtures, fittings, and data shown are approximate interpretations and for illustrative purposes only. Measured according to the RICS. Not To Scale.

www.goldlens.co.uk

Ref. No. 031381R

