



MARCO HARRIS
THE PROPERTY PROFESSIONALS

Douglas Crescent, Southampton, Hampshire, SO19

Guide Price £550,000

🛏️ 4 🚿 2 🚗 2



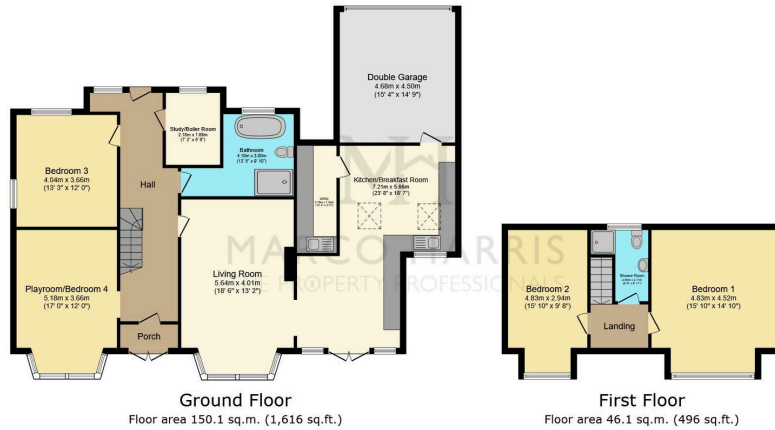
Douglas Crescent by Marco Harris.

From the moment you enter behind the green front door—with its exquisite stained glass windows—a sense of space and character washes over you. Right of the hallway is the first of four double bedrooms, freshly refurbished to feel bright, clean, and welcoming. Opposite this is a versatile home office or storage room. The main bathroom is a luxurious retreat, featuring a dual vanity unit, double shower with both traditional and rainfall options, a freestanding roll-top bath, modern tiling, and a heated towel rack. Past the hallway you'll find a second double bedroom/playroom, complete with a charming lower bay window, and bathed in natural light. Adjacent is the main living room, with parquet flooring and an exposed brick chimney housing a log-burning stove, offering warmth both literally and aesthetically.

The heart of the home is the open-plan kitchen/dining space (approx 23' × 18'). Vaulted ceilings reveal original beams, while deluxe windows flood the room with light—making it a perfect spot for everyday family life and entertaining alike. A neat utility room, tucked off the kitchen, offers laundry convenience without compromising style. Upstairs, two more generous double bedrooms await, served by a fully tiled shower room. Every bedroom is well-proportioned; every space thoughtfully designed.

Set on a genuinely rare quarter-acre plot in Douglas Crescent—a size you simply don't find often in this part of Southampton. The electric roller-door opens onto a power-lit double garage (approx 15'6" × 15'), with sleek internal access to the kitchen. Surrounding it is an expensive driveway, offering secure off-street parking for multiple vehicles. Step through to the rear



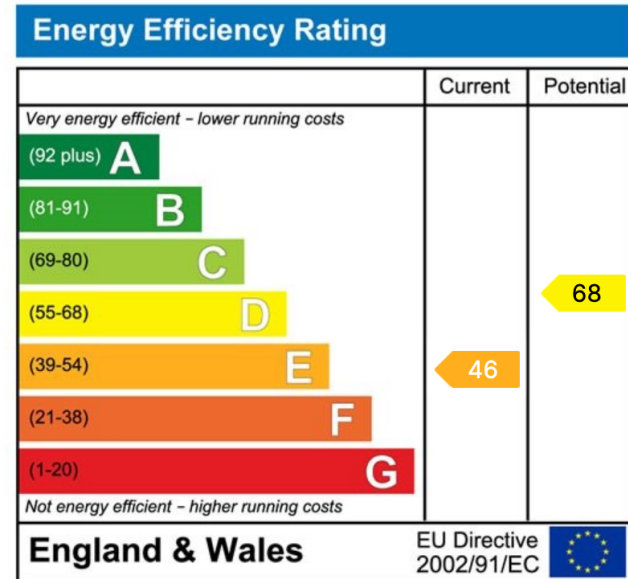


Total floor area: 196.2 sq.m. (2,112 sq.ft.)

This floor plan is for illustrative purposes only. It is not drawn to scale. Any measurements, floor areas (including any total floor area), openings and orientations are approximate. No details are guaranteed, they cannot be relied upon for any purpose and do not form any part of any agreement. No liability is taken for any error, omission or misstatement. A party must rely upon its own inspection(s). Powered by www.Propertybox.io

MH
MARCO HARRIS
PROPERTY PROFESSIONALS

- Impressive 0.25-acre plot with secluded rear garden
- Expansive 23ft open-plan kitchen/breakfast room with vaulted ceiling
- Separate stylish shower room on first floor
- Dedicated utility room and home study
- Double garage with internal access and electric roller door
- Four double bedrooms split across two floors
- Luxurious bathroom with freestanding clawfoot tub
- Generous 18ft living room with feature fireplace
- Detached garden office/gym with power and lighting
- Prime location on one of Bitterne's most sought-after roads



Website: marcoharris.co.uk

Email: lettings@marcoharris.co.uk // sales@marcoharris.co.uk

Phone: 02381 733330