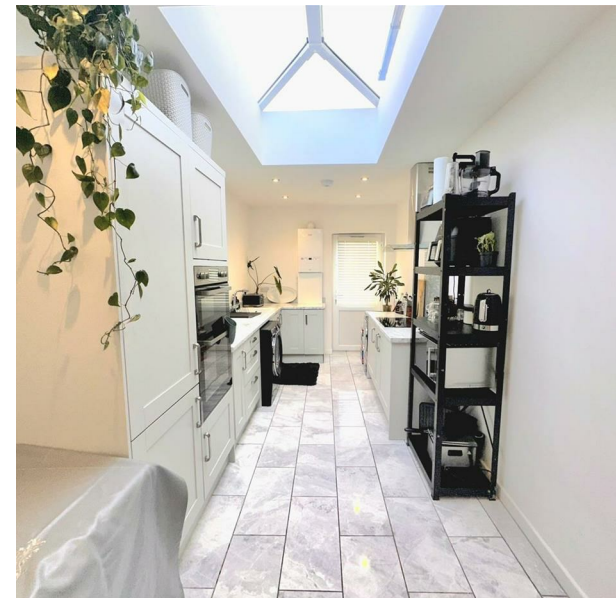


Throne Crescent, Rowley Regis, B65 9JD

£1,350 Per Month

Council Tax Band: C



MAGNIFICENT 3-BEDROOM DETACHED HOME - AVAILABLE TO LET

We are delighted to offer to the rental market this magnificent detached house, situated in a desirable neighbourhood. This property offers a harmonious blend of living areas and modern conveniences, making it an ideal home for professionals or families looking for a long-term let.

Property Features:

Ground Floor: You are greeted by a warm and inviting lounge, leading into a standout open-plan kitchen/diner. This culinary space features a stunning skylight that floods the room with natural light—perfect for family meals or entertaining. A convenient downstairs shower room adds extra practicality to the ground floor layout.

First Floor: The upstairs accommodation comprises two generous double bedrooms and a third bedroom. A tastefully designed family bathroom serves this floor, offering a relaxing space to unwind.

External: The property benefits from a large driveway to the front with ample off-road parking. To the rear, there is a private garden perfect for summer relaxation. The house sits on a generous plot, offering additional privacy and outdoor space to the side.

Location: Conveniently located within easy reach of local amenities, schools, and transport links.

Key Information:

EPC Rating: D (66)
Council Tax: Band C



Open House Edgbaston



Energy Efficiency Rating		
	Current	Potential
Very energy efficient - lower running costs		
(92 plus) A		
(81-91) B		
(69-80) C		
(55-68) D	66	
(39-54) E		
(21-38) F		
(1-20) G		
Not energy efficient - higher running costs		
England & Wales	EU Directive 2002/91/EC	