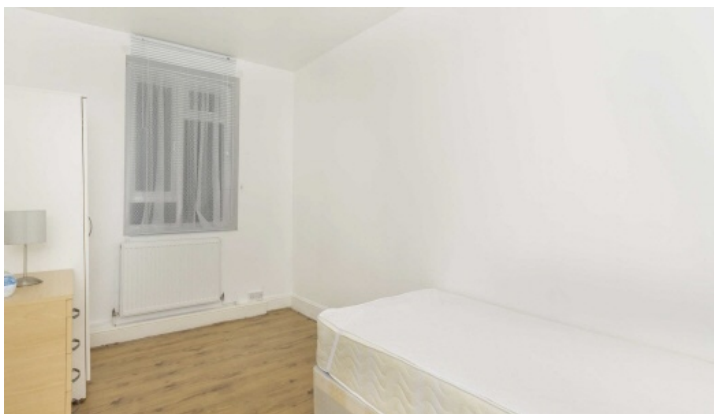


Chard

— Lettings —



Fulham Palace Road, SW6

£400 pw (£1,733 pcm)

A ground floor two bedroom flat, recently redecorated. Both bedrooms are a good size with plenty of space. The flat has it's own front door and a separate kitchen.

Located off Fulham Palace Road, you are a within a mile of Putney Brigde and Hammersmith, and you are right next to Bishops Park.

- Two Bedrooms • Separate Kitchen • Wood Floors •
- Bishops Park • Ground Floor •

Chard Fulham
5 Harwood Road,
London, SW6 4QP
020 7384 1400
fulhamlettings@chard.co.uk

Energy Rating: . We aim to make our particulars both accurate and reliable. However they are not guaranteed; nor do they form part of an offer or contract. If you require clarification on any points then please contact us, especially if you're traveling some distance to view. Please note that appliances and heating systems have not been tested and therefore no warranties can be given as to their good working order.