



Burnett Close, Melksham

Offers Over £300,000

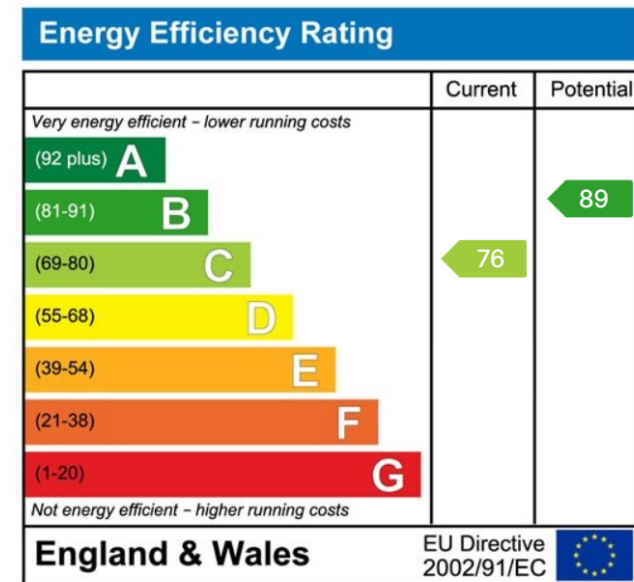
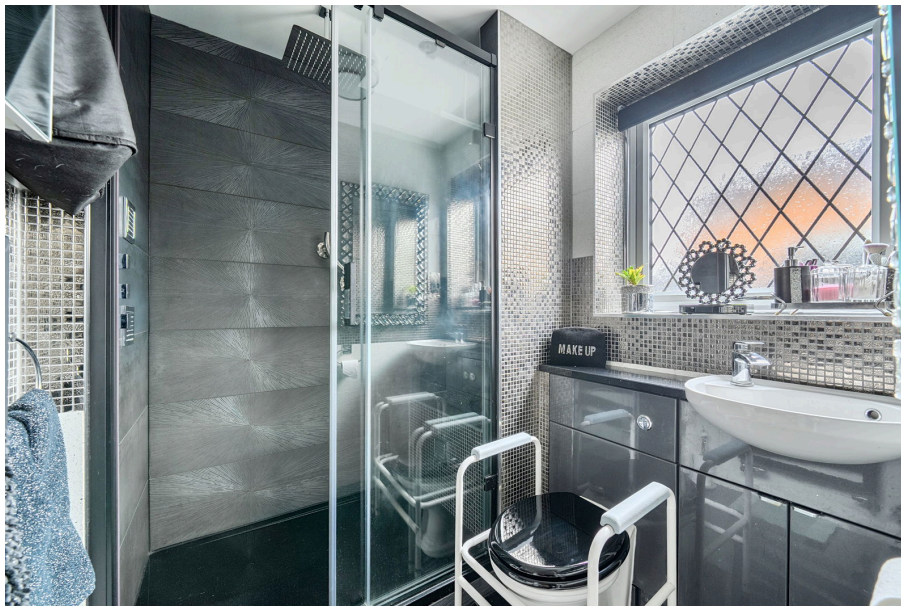
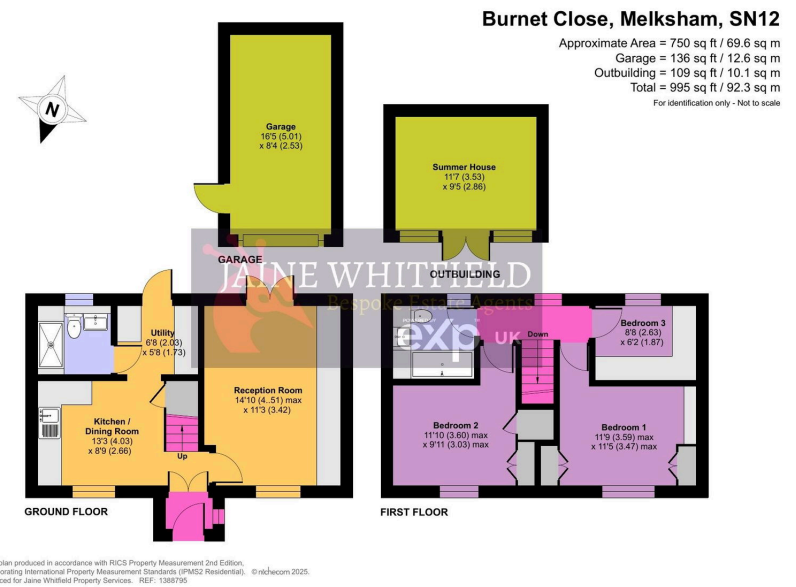
3 2 1

- Excellent 3 bedroom home
- High spec throughout
- Single garage & parking
- Kitchen/breakfast room plus utility
- Cul-de-sac location
- Large corner plot
- Excellent storage in all rooms
- Landscaped garden with outdoor, insulated summer house with power
- Recently fitted boiler
- Local walks and play areas close by.



Situated on a generous corner plot in a popular area of Melksham, this beautifully upgraded three-bedroom end-of-terrace home offers stylish, modern living throughout. The property features a reconfigured contemporary kitchen/diner with quality finishes, a spacious front-to-rear lounge, and well-proportioned bedrooms with excellent storage. Externally, the landscaped low-maintenance gardens, insulated summer house, garage, and driveway parking enhance its appeal, while further benefits include new uPVC double glazing and a Worcester boiler with Hive smart controls—making it an ideal home for families or professionals.





☎ 01225 705650

✉ hello@jainewhitfield.co.uk

🌐 www.jainewhitfield.co.uk



Part of the Internation Group of Estate Agents Power by EXP UK. Registered address: 5 Churchill Place, 10th Floor, London E14 5HU