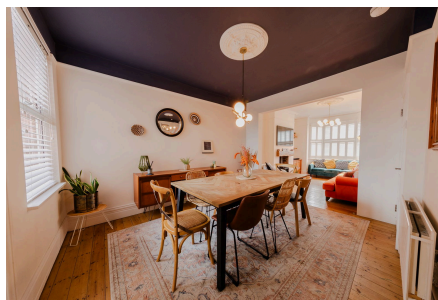


50 Western Road, Wolverton

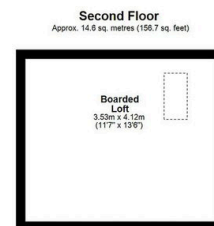
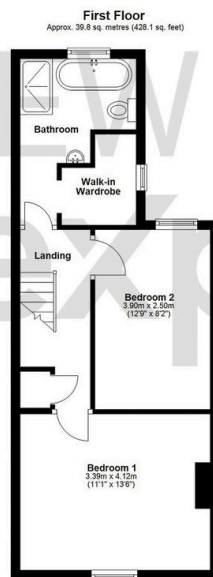
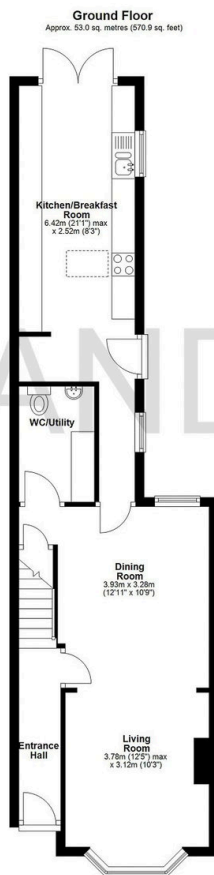
Offers Over £325,000 (Price Guiding : £325,000 - £350,000)



A beautifully styled Victorian home full of character, combining period features with a modern finish to create something that truly stands out from the norm – and offered for sale with **no upper chain**.

Key Features

- Victorian home dating back to late 1890's
- Current owners since 2022
- Tastefully improved by the current owners
- Council Tax Band - B
- Approx. monthly utility bills = £180.00
- 107 m² = 1156 Sq Ft
- Stunning re-fitted bathroom
- Walk-in wardrobe
- No Upper Chain
- REF: AJ1276



Total area: approx. 107.4 sq. metres (1155.7 sq. feet)

Floor plans are for illustrative purposes only and should be treated as general guidance. Dimensions are approximate to give a general indication of the floor layout only. Floor produced using Planica.