

CLIVE ROAD

HEATH PARK | GIDEA PARK | RM2 5SP



GUIDE PRICE £425,000

Telephone 01708 730255

Located in a side turning is this three bedroom semi detached home. The ground floor accommodation comprises of lounge/diner, fitted kitchen and large conservatory. The first floor has three bedrooms, all with built-in wardrobes and three piece bathroom. The current owners have kept this home to an exceptionally high standard and you will not fail to be impressed by the beautiful kitchen and bathroom. Externally there is parking to the front, side pedestrian access leading to the rear garden. The garden has a patio, lawned area and log cabin to the rear measuring approximately 17' square. This home must be seen to appreciate all that's on offer. EPC D. (ID: 364075)

- Three Bedrooms
- Large Conservatory
- Maintained to a High Standard
- Log Cabin in Garden

Entrance Lobby:

Leaded light double glazed door and adjacent windows to front, door to:

Hall:

Stairs to first floor. Doors leading to:

Lounge/Diner: 24'5 x 11'4 > 10'11

Leaded light double glazed bay window to front, double glazed double doors to conservatory.

Kitchen: 13'2 x 5'4

Leaded light double glazed window to rear, double glazed door to side.

Conservatory: 16'4 x 15'7 (max)

Double glazed doors and adjacent leaded light double glazed windows to garden.

First Floor Landing:

Loft access. Doors leading to:

Bedroom One: 11'11 x 9'8

Leaded light double glazed window to rear, built-in wardrobes.

Bedroom Two: 10'9 x 9'10

Leaded light double glazed window to front, built-in wardrobes.

Bedroom Three: 8'9 x 6'4

Leaded light double glazed window to rear, built-in wardrobes.

Bathroom:

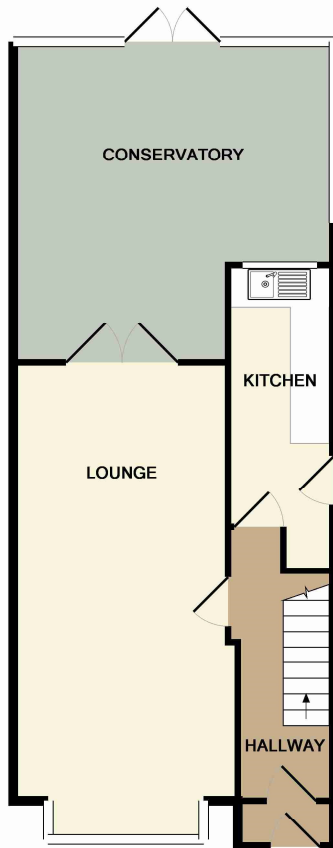
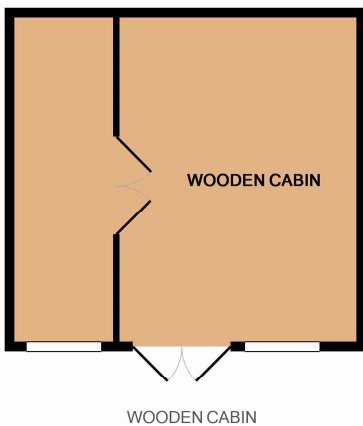
Leaded light double glazed window to front, bath, sink, toilet.

Externally:

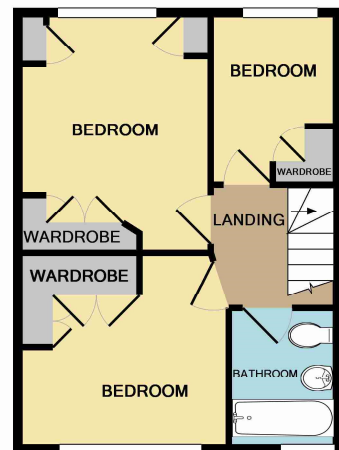
Block paved driveway to front, side pedestrian access.

Rear Garden:

Patio, lawn, shrub borders, log cabin to rear.



GROUND FLOOR



1ST FLOOR

Whilst every attempt has been made to ensure the accuracy of the floor plan contained here, measurements of doors, windows, rooms and any other items are approximate and no responsibility is taken for any error, omission or mis-statement. This plan is for illustrative purposes only and should be used as such by any prospective purchaser. The services, systems and appliances shown have not been tested and no guarantee as to their operability or efficiency can be given
 Made with Metropix ©2016