



Gaunton Close, TAUNTON TA1 4TW



welcome to

Gaunton Close, TAUNTON

Fox and Sons are delighted to bring to the market this Three-Bedroom, End-Terrace Home situated in a sought-after location in Taunton. This property needs to be viewed to be fully appreciated, call our Office today to book your viewing!

Situated in the popular Galmington area on the south-western edge of Taunton is this Three-Bedroom End-Terrace Home. The accommodation briefly comprises Entrance Hall, Rear Aspect Lounge, Front Aspect Kitchen/Diner and Downstairs WC to the Ground Floor. To the First Floor there are Three Bedrooms and a Family Bathroom. Externally, the home benefits from a Secluded South Facing Rear Garden.

Conveniently located close to a range of local amenities, including a convenience store and post office in Galmington, with further facilities available at the nearby Comeytrowe Centre.

The location is ideally suited for families and professionals alike, being within the catchment area for outstanding schools and conveniently positioned for Musgrove Park Hospital, The Castle School and Bridgwater & Taunton College. Taunton Town Centre is also within easy reach and is a bustling, forward-looking town with excellent amenities. With a selection of independent and high street shops, distinctive restaurants, cafes and attractions, all whilst being surrounded by picturesque countryside. Taunton has excellent travel links, accessed by road, rail and bus.

Entrance Hall

Laminate flooring. Large cupboard. Radiator. Staircase rising to first floor landing.

Cloakroom

WC and wash hand basin with storage below. Frosted window.

Lounge

15' 8" x 10' 8" (4.78m x 3.25m)
Wood laminate flooring. Radiator. Rear aspect window and French Doors.

Kitchen Diner

18' 1" x 9' 6" (5.51m x 2.90m)
Tiled flooring and partially tiled walls. 2018 Combination-boiler. Storage cupboard. Built-in dishwasher. Side aspect window. A range of wall and base units with work surface over. Stainless steel one and a half sink with drainer and mixer tap over.





First Floor Landing

Two large cupboards.

Bedroom One

14' 4" x 8' 7" (4.37m x 2.62m)

Large Double Bedroom. Carpeted. Radiator. Large built-in cupboard. Rear aspect window.

Bedroom Two

14' 4" x 8' 4" (4.37m x 2.54m)

Large Double Bedroom. Carpeted. Radiator. Side aspect window.

Bedroom Three

9' 2" x 6' 11" (2.79m x 2.11m)

Single Bedroom. Carpeted. Radiator. Rear aspect window.

Bathroom

Lino flooring. Frosted front aspect window. Radiator. Suite comprising bath with shower over, WC and wash hand basin with storage beneath.

Loft Space

Partially boarded.

Rear Garden

Mainly laid to lawn with decking and patio areas. Rear gate leading to parking. Lean-to shed. Garden tap.

Parking

Communal Parking.

Agents Note

Currently, April 2026 - March 2027, there is a management/service charge of £31.92 per month.



view this property online fox-and-sons.co.uk/Property/TAU109502



welcome to

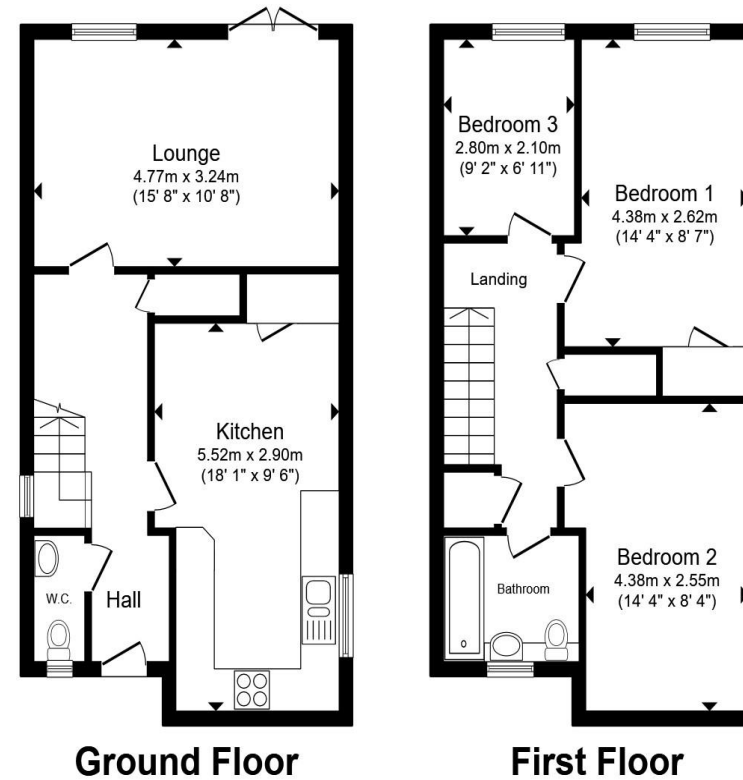
Gaunton Close, TAUNTON

- Three-Bedroom End-Terrace Home
- South Facing Secluded Rear Garden
- Sought-After Location
- Close to Amenities
- Popular Secondary School Catchment

Tenure: Freehold EPC Rating: C

Council Tax Band: C

£270,000



Total floor area 88.1 m² (948 sq.ft.) approx

This floor plan is for illustrative purposes only. It is not drawn to scale. Any measurements, floor areas (including any total floor area), openings and orientation are approximate. No details are guaranteed, they cannot be relied upon for any purpose and they do not form part of any agreement. No liability is taken for any error, omission or misstatement. A party must rely upon its own inspection(s). Powered by www.propertybox.io



view this property online fox-and-sons.co.uk/Property/TAU109502



Property Ref:
TAU109502 - 0007

1. MONEY LAUNDERING REGULATIONS Intending purchasers will be asked to produce identification documentation at a later stage and we would ask for your co-operation in order that there is no delay in agreeing the sale. 2. These particulars do not constitute part or all of an offer or contract. 3. The measurements indicated are supplied for guidance only and as such must be considered incorrect. Potential buyers are advised to recheck measurements before committing to any expense. 4. We have not tested any apparatus, equipment, fixtures or services and it is in the buyers interest to check the working condition of any appliances. 5. Where an EPC, or a Home Report (Scotland only) is held for this property, it is available for inspection at the branch by appointment. If you require a printed version of a Home Report, you will need to pay a reasonable production charge reflecting printing and other costs. 6. We are not able to offer an opinion either written or verbal on the content of these reports and this must be obtained from your legal representative. 7. Whilst we take care in preparing these reports, a buyer should ensure that his/her legal representative confirms as soon as possible all matters relating to title including the extent and boundaries of the property and other important matters before exchange of contracts.

Fox & Sons is a trading name of Sequence (UK) Limited which is registered in England and Wales under company number 4268443, Registered Office is Cumbria House, 16-20 Hockliffe Street, Leighton Buzzard, Bedfordshire, LU7 1GN. VAT Registration Number is 500 2481 05.



01823 286161



taunton@fox-and-sons.co.uk



52 East Street, TAUNTON, Somerset, TA1 3NA



fox-and-sons.co.uk