



OVER 60?

Secure this property
for up to **59% less!**

Price

£225,000

Freehold

2x  1x  2x 

**Jeffery Street,
Gillingham, Kent, ME7**

Wards
Helping you move forwards



Main features

- Ideal first time buy
- Gas central heating and double glazing
- Useful boarded loft with double glazing windows
- Modern kitchen and bathroom
- Situated 'a stones throw' from Gillingham High Street and mainline station

Accommodation

GROUND FLOOR

Entrance Hall
 Lounge: 10'11 x 9'10 (3.33m x 3.00m)
 Dining Room: 12'11 x 10'7 (3.94m x 3.23m)
 Kitchen: 8'3 x 6'8 (2.52m x 2.03m)
 Bathroom

BASEMENT

Cellar: 12'2 x 10'3 (3.71m x 3.13m)

FIRST FLOOR

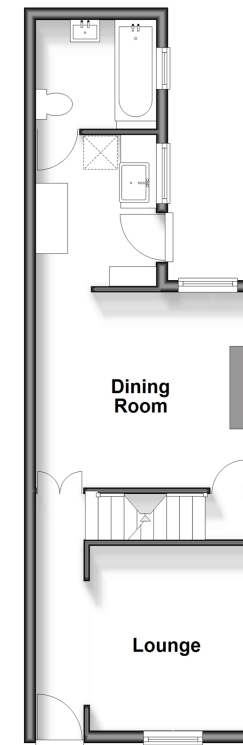
Landing
 Bedroom 1: 12'2 x 10'2 (3.71m x 3.10m)
 Bedroom 2: 12'0 x 10'5 (3.66m x 3.18m)

OUTSIDE

Front Garden
 Rear Garden

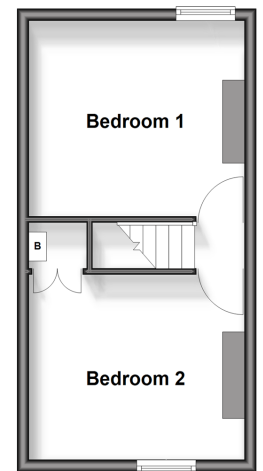
Ground Floor

Approx. 35.8 sq. metres (385.2 sq. feet)



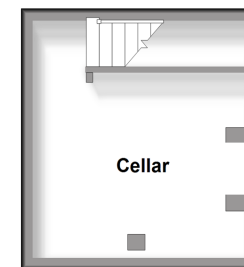
First Floor

Approx. 26.6 sq. metres (286.0 sq. feet)



Basement

Approx. 14.3 sq. metres (154.4 sq. feet)



Call Gillingham - 01634 851191 ■ wardsofkent.co.uk

- Legal advice should be taken to verify fixtures/fittings, planning, alterations and/or lease details
- Appliances & services are untested, dimensions are approximate and floor plans are not to scale
- Through a Homewise Home For Life Plan people aged 60+ can secure this property for up to 59% less, by purchasing a Lifetime Lease.



10927345/20250507/AC/GS