



Downtown, Woden Street, Salford

£1,250 PCM

Give your city living an upgrade with this stylish two-bedroom, two-bathroom ground-floor apartment in the ever-popular Downtown development on Woden Street. With direct access to the communal courtyard, you get a rare little outdoor escape that feels like your own private terrace, perfect for a morning coffee or unwinding after work.

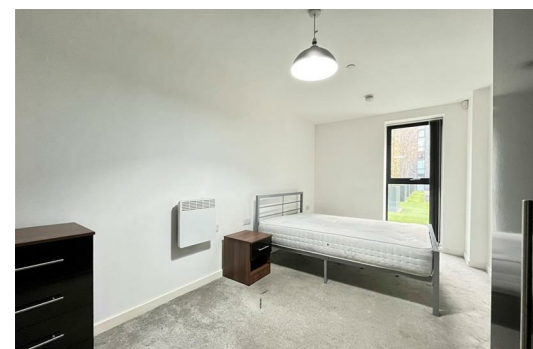
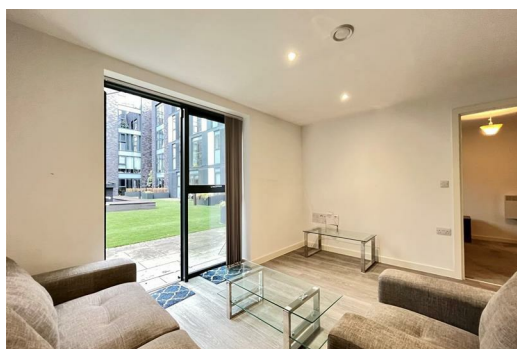
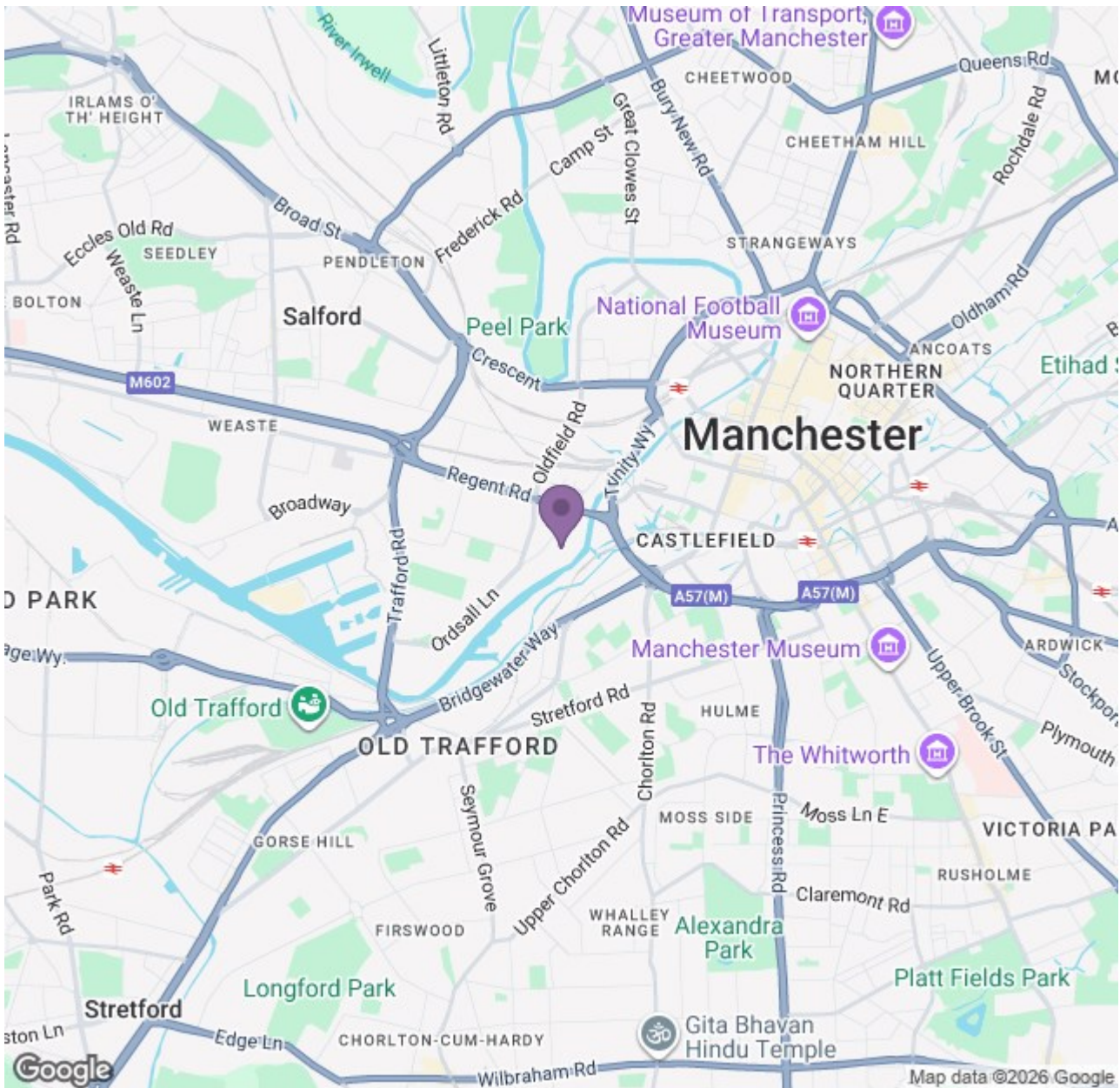
Inside, the open-plan living space is bright and modern, with a sleek fitted kitchen and full-height windows that bring in loads of natural light. Both bedrooms are genuine doubles, offering plenty of room to live comfortably (or work from home without sitting on the edge of your bed). You've also got two spacious bathrooms, including an en-suite, all finished to a clean contemporary standard.

Downtown has grown into one of Ordsall's most sought-after spots thanks to its hotel-style facilities and brilliant location on the edge of Castlefield. With a concierge, gym, yoga studio, media room, roof terrace and landscaped communal areas, everything you need is right at your fingertips. And when you're ready to head out, Manchester city centre is just a short walk away, with Combrook Metrolink and major routes within easy reach.

Modern, convenient and perfectly placed for city life, this apartment is ideal for professionals, couples or sharers looking for a comfortable home close to all the action.

Available Now (Subject to application & referencing)
Deposit: £1,440
Council Tax Band: B
12 Month Tenancy





Energy Efficiency Rating			Environmental Impact (CO ₂) Rating		
Band	Score	Rating	Band	Score	Rating
A	92-100	Very Good	A	1-10	Very Low
B	81-91	Good	B	11-20	Low
C	69-80	Fair	C	21-30	Medium
D	55-68	Below Average	D	31-40	High
E	40-54	Poor	E	41-50	Very High
F	21-39	Very Poor	F	51-60	Extremely High
G	1-20	Extremely Poor	G	61-70	Extremely High