



Park Road, KT1

£369,999

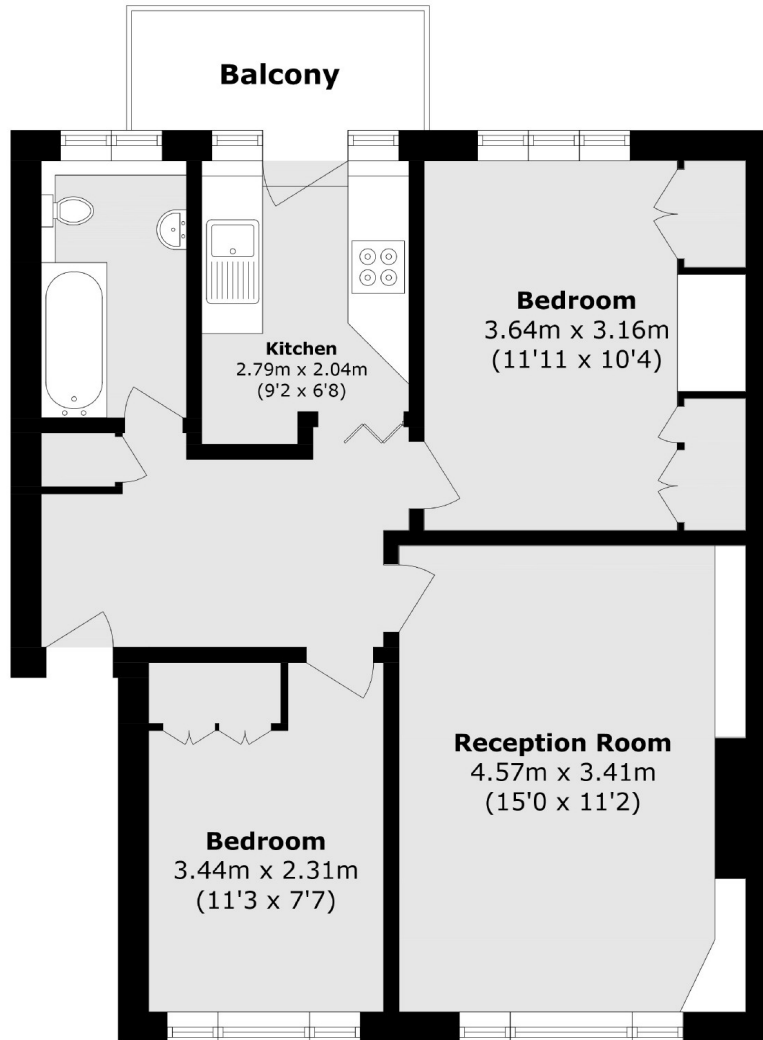
Offers Over £374,950. A lovely two double bedroom apartment forming part of an Art Deco development in a quiet cul-de-sac location. This apartment has fabulous open views to the front. This apartment offers almost 600 sq ft of beautifully presented living space and has the benefit of a private balcony and residents permit parking too.

Park Court is a sought after purpose built block excellently located in Hampton Wick and is just a stone's throw away from Royal Bushy Park. Park Court is close to Kingston town centre where you will find a vast array of shops, bars and restaurants including access to the River Thames.

- Two Double Bedrooms • Opposite Bushy Park • Private Balcony •
- Off-Street Parking • Close To The Station • Fantastic Location •

SNELLERS

ESTATE AGENTS



Total area (approx.): 54.2 sq. m (583.4 sq. ft)

Balcony area (approx.): 3.3 sq. m (35.5 sq. ft)

Snellers Teddington Sales
74 Broad Street
Teddington
TW11 8QX
020 8408 8040
teddingtonsales@snellers.co.uk

Energy Rating: C We aim to make our particulars both accurate and reliable. However they are not guaranteed; nor do they form part of an offer or contract. If you require clarification on any points then please contact us, especially if you're traveling some distance to view. Please note that appliances and heating systems have not been tested and therefore no warranties can be given as to their good working order