



211 Hemerdon Heights

Plympton, Plymouth, PL7 2TJ

£290,000



Recently renovated family home occupying an elevated position with views out over Plympton. Finished to a high standard throughout, with plenty of natural light, the ground floor accommodation offers open plan living space & an office room/utility with 3 good-sized bedrooms & a beautifully-fitted high-spec bathroom.



HEMERDON HEIGHTS, PLYMPTON, PLYMOUTH PL7 2TJ

ACCOMMODATION

Obscured uPVC double-glazed door opening into the open plan living space.

OPEN PLAN LIVING SPACE

Wood-effect LVT flooring and ceiling spotlighting throughout.

LOUNGE 13'6" x 9'1" (4.14 x 2.78)

uPVC double-glazed window to the front elevation. Feature inset storage alcoves. Feature vertical radiator. Stairs ascending to the first floor landing.

DINING AREA 9'4" x 7'10" (2.85 x 2.39)

Ample space for dining furniture. Feature inset storage alcoves. uPVC double-glazed patio doors opening to the garden.

KITCHEN 10'2" x 7'7" (3.11 x 2.33)

Fitted with a range of matching base and wall-mounted units incorporating a square-edged composite worktop with inset 4-ring electric hob with stainless-steel extractor, inset composite sink and mixer tap. Marble-effect splash-back. Integrated fridge, freezer, oven and dishwasher. uPVC double-glazed window to the rear elevation. uPVC double-glazed door opening to the garden.

OFFICE/UTILITY 11'10" x 7'10" (3.63 x 2.40)

Space and plumbing for a washing machine and tumble dryer with additional storage either side. uPVC double-glazed window to the front elevation.

FIRST FLOOR LANDING 11'1" x 5'10" (3.40 x 1.79)

Doors providing access to the accommodation. Drop-down hatch with pull-down ladder, providing access to the insulated, partially-boarded loft.

BEDROOM ONE 10'11" x 7'11" (3.35 x 2.43)

uPVC double-glazed window to the rear elevation. Open plan access into a walk-in wardrobe. Ceiling spotlighting and additional feature pendant lighting.

WALK-IN WARDROBE 8'6" x 2'0" (2.61 x 0.62)

Fitted with shelving and hanging units with courtesy lighting. uPVC double-glazed window to the rear elevation. Ceiling spotlighting.

BEDROOM TWO 11'1" x 7'5" (3.39 x 2.28)

uPVC double-glazed window to the front elevation. Ceiling spotlighting.

BEDROOM THREE 10'6" x 6'9" (3.21 x 2.08)

uPVC double-glazed window to the front elevation. Ceiling spotlighting.

FAMILY BATHROOM 7'6" x 6'2" (2.31 x 1.90)

A luxurious bathroom, fully-tiled with a mix of marble and stone-effect tiles and gold fittings. The bath has a tiled surround with a ceiling-mounted waterfall shower and an additional detachable shower hose, surface-mounted wash handbasin with mixer tap set onto a wall-mounted 'distressed' storage unit and a wall-mounted wc with concealed cistern. Heated towel rail. Extraction system. Ceiling spotlighting.

OUTSIDE

The property is approached via a concrete driveway providing off-road parking for one vehicle with a bordering area of lawn. mature shrubs and bushes. A walkway to the side of the house leads to the rear garden which is fully-enclosed by feather-edged fencing and laid to 2 tiers, with mature planting. The top level is laid to stone chippings and the lower level is laid to lawn.

COUNCIL TAX

Plymouth City Council
Council Tax Band: C

SERVICES

The property is connected to all the mains services: gas, electricity, water and drainage.

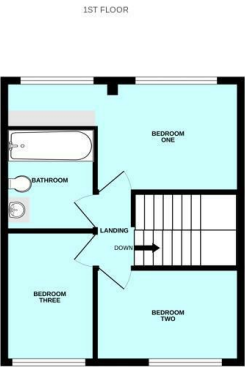
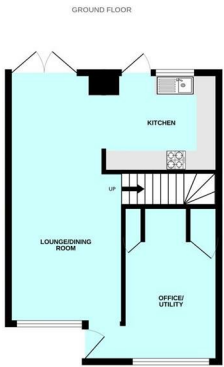
WHAT3WORDS

///toxic.proud.stump

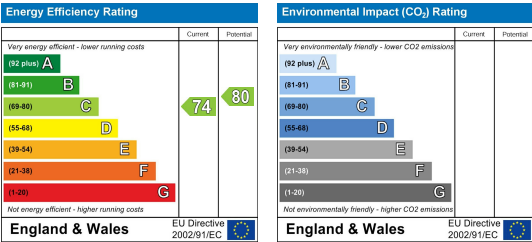
Area Map



Floor Plans



Energy Efficiency Graph



These particulars, whilst believed to be accurate are set out as a general outline only for guidance and do not constitute any part of an offer or contract. Intending purchasers should not rely on them as statements of representation of fact, but must satisfy themselves by inspection or otherwise as to their accuracy. No person in this firms employment has the authority to make or give any representation or warranty in respect of the property.