



Cedar Barn Offices Draycott

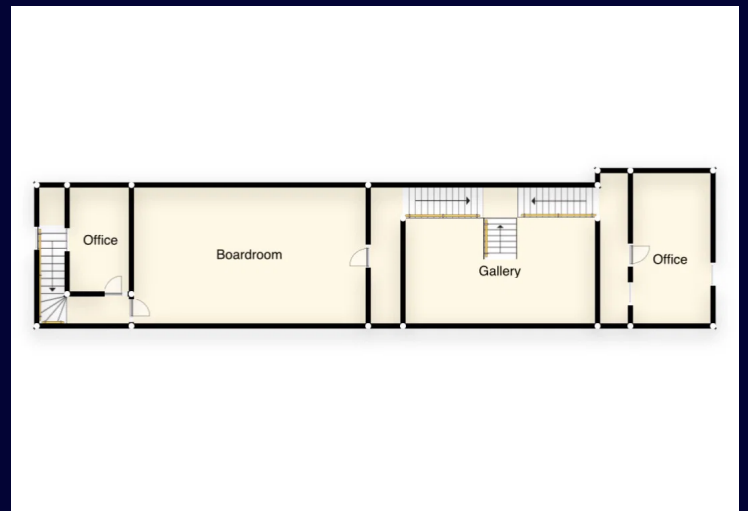
£400,000

The property, which extends to approximately 2300 square foot, is situated in a gated courtyard adjacent to a beautiful residential farmhouse which is also available by separate negotiation. This superb corporate office complex, with its impressive full height entrance hall and oak staircase to the first floor, also includes ample car parking in front. The superb facility has a large board room with accompanying office space and is currently let out for £3114 pcm. This represents a good investment opportunity or indeed the chance to occupy the premises for your own interests. Aside from the current use, the vast amount of square footage could be developed into holiday lets, a wonderful garage showroom to the main house or indeed as an annex, gymnasium or music studio to name a few.

- Farmhouse £1,050,000
- Walking distance of amenities
- Barn £400,000
- Immaculately presented throughout

Bedrooms: 5 | Bathrooms: 4 | Receptions: 4

Contact Everington & Ruddle on; 01332 669600
derby@everingtonandruddle.co.uk



The property, which extends to approximately 2300 square foot, is situated in a gated courtyard adjacent to a beautiful residential farmhouse which is also available by separate negotiation. This superb corporate office complex, with its impressive full height entrance hall and oak staircase to the first floor, also includes ample car parking in front. The superb facility has a large board room with accompanying office space and is currently let out for £3114 pcm. This represents a good investment opportunity or indeed the chance to occupy the premises for your own interests. Aside from the current use, the vast amount of square footage could be developed into holiday lets, a wonderful garage showroom to the main house or indeed as an annex, gymnasium or music studio to name a few.

FARMHOUSE ALSO AVAILABLE Grade 2 listed Farmhouse set in approximately one acres of beautifully manicure gardens, on the edge of stunning countryside with views towards Church Wilne. There are wonderful country walks right from the doorstep, with a footpath leading over the river towards Shardlow and beyond. This superb property, which is arranged over three floors, extends to approximately 4350 square feet and has been lovingly restored by the current owners, who have left no stone unturned in creating a beautiful quality family home. There are five double bedrooms, three of which have superb en-suite facilities and a wonderful master suite overlooking the stunning garden, with a large dressing room, walk in wardrobe and spacious five piece bathroom. The living accommodation is also vast, including four receptions rooms, a spacious bespoke fitted kitchen with granite worksurfaces, a utility room, boot room and WC. With a choice of wonderful sitting areas to occupy, it would be difficult to choose a favourite, but what could be better than sitting in a beautiful garden room with a roaring log burner, vaulted ceiling and large windows providing views of the stunning water feature, topiary garden and chapel.