

## Thurloe Place, SW7

£1,425 Per week

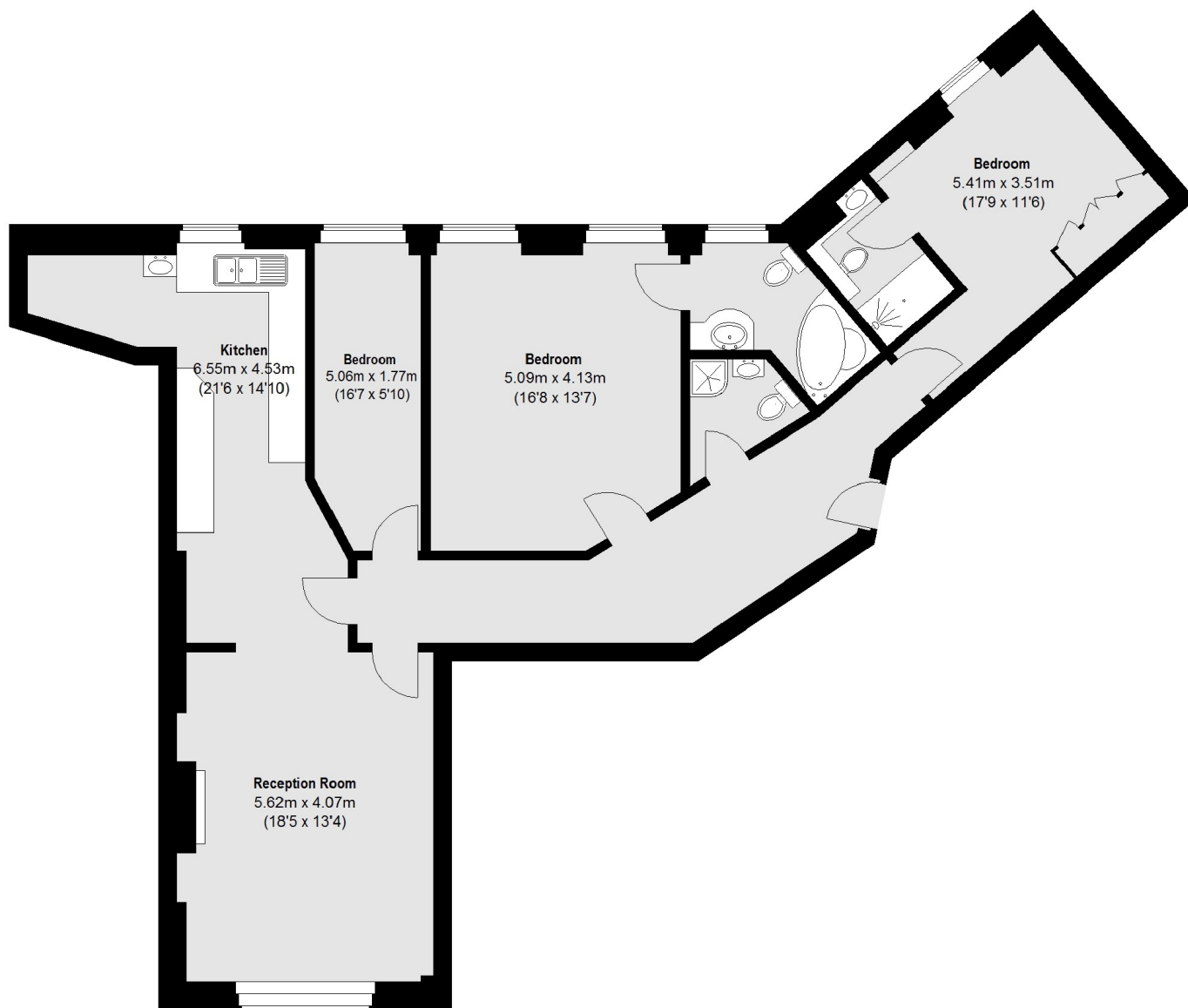
A three bedrooms, three bathrooms apartment situated within a building with on-site porter services. The property has lift access, wooden flooring throughout, and high ceilings.

The building offers porter services and is conveniently located approximately 0.2 miles from South Kensington station and 0.3 miles from Knightsbridge station.

### Features

- Portered Block
- Lift Access
- Communal Roof Terrace
- Semi Open Plan
- Knightsbridge
- South Kensington

# Thurloe Place, London, SW7



Total area (approx.): 117.6 sq. m (1265.8 Sq. ft)