





# BREENS

THE HOME

## 3 Alma Road

*Enfield · EN3*

KEY FEATURES

- Third Floor Apartment with Lift Access
- Two Double Bedrooms, The Principal Benefitting From An En-Suite
- Open-Plan Kitchen, Dining and Reception Space
- Separate Family Bathroom
- Tastefully Decorated Throughout
- Benefitting From a Private Balcony

---

EPC RATING

**B**

COUNCIL TAX BAND

**C**

---

**2**

BEDROOMS

**2**

BATHROOMS

**1**

RECEPTIONS

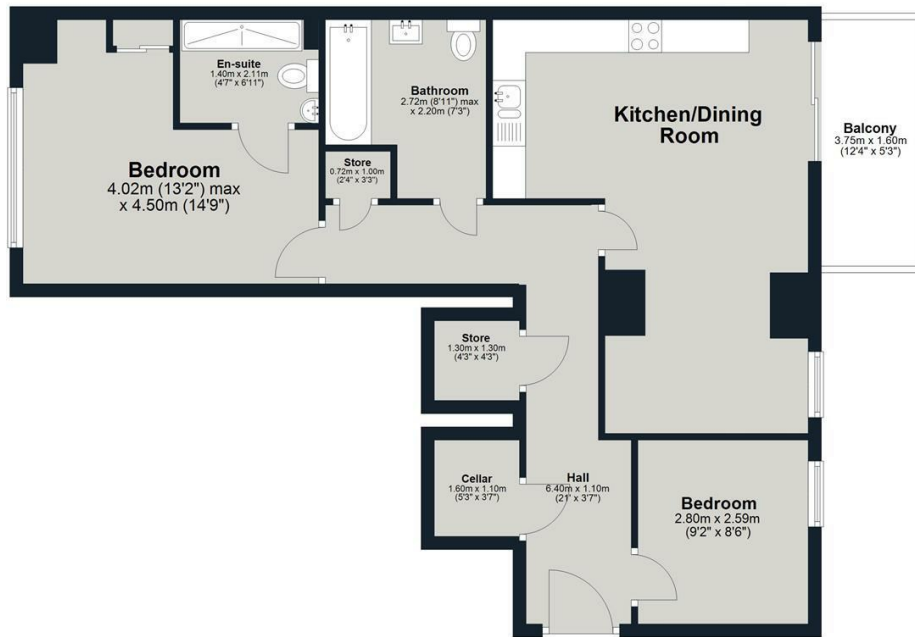


# BREENS

# BREENS



**Ground Floor**  
 Approx. 73.0 sq. metres (785.5 sq. feet)  
 (excluding Balcony)



Total area: approx. 73.0 sq. metres (785.5 sq. feet)

**Peregrine Point**

GET IN TOUCH

**0208 804 8989**

[enfieldwash@wjmeade.net](mailto:enfieldwash@wjmeade.net)

[www.breens.property](http://www.breens.property)

VISIT US

**557-559 Hertford Road, Enfield, EN3 5UQ**

These particulars are intended as a general guide and are believed to be correct, but their accuracy is not guaranteed and they do not form part of any offer or contract. All measurements are approximate and for guidance only. The Agent has not tested any apparatus, equipment, fixtures, fittings or services and cannot verify they are in working order or fit for purpose. Photographs are for illustration only and may depict items that are not for sale or included in the sale price. References to tenure are based on information supplied by the vendor; the Agent has not seen the title documents, and buyers should obtain verification from their solicitor or surveyor. Under the Money Laundering Regulations 2017, intending purchasers will be asked to produce identification and documentation at a later stage. These particulars are issued on the condition that all negotiations are conducted through Breens Estate Agents. Subject to contract and availability.