

Living
made
better

21 Shepherd's Bush Road
Shepherd's Bush, W6 7LX



£2,500 PCM

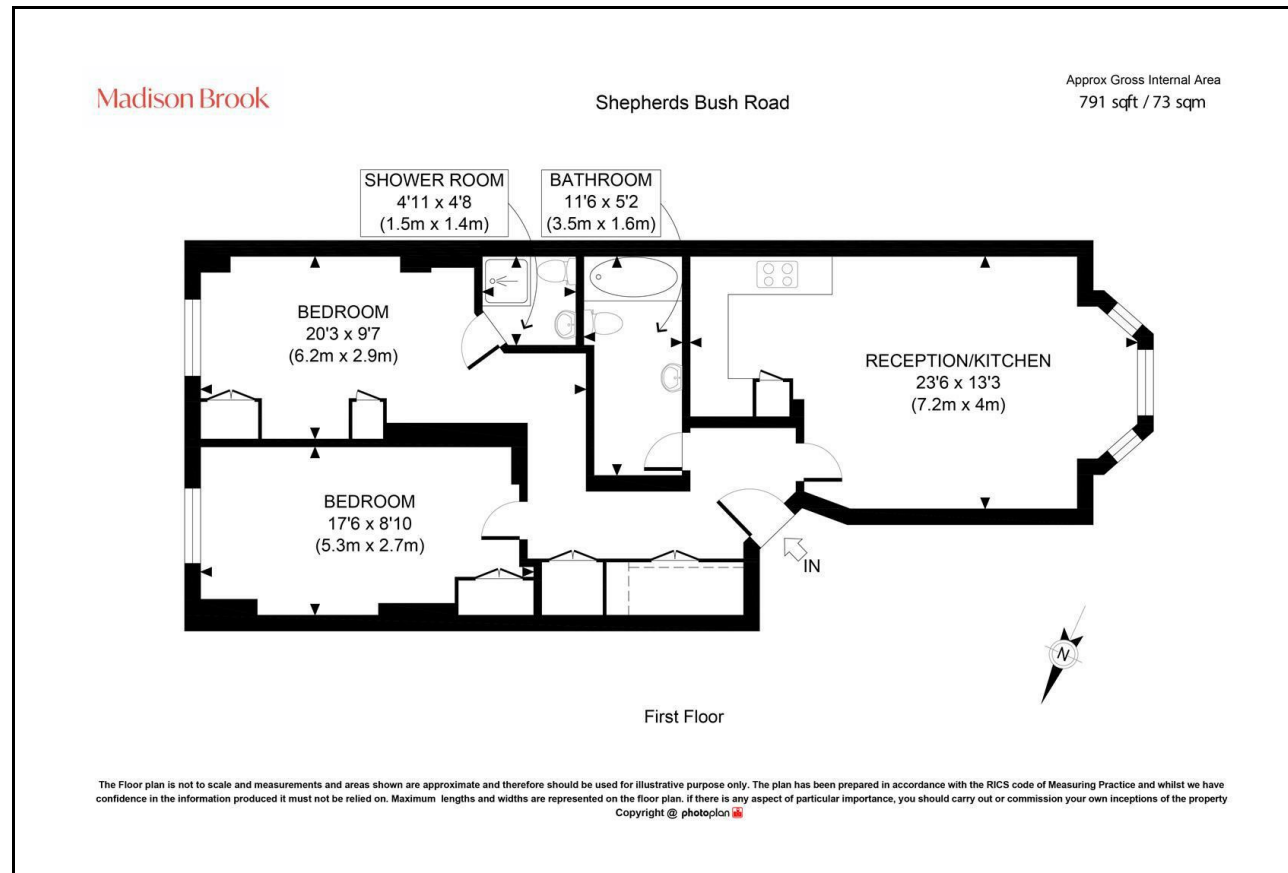
21 Shepherd's Bush Road, Shepherd's Bush, W6 7LX

Madison Brook

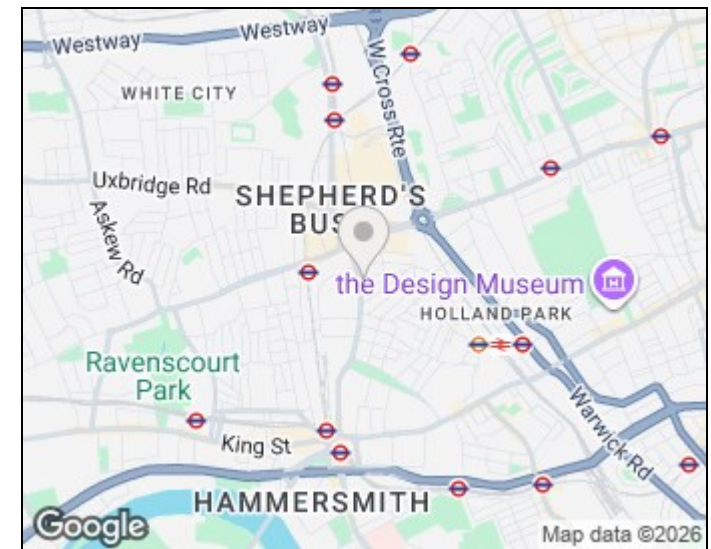
Property Summary

A well-presented two bedroom first floor apartment offering approximately 791 sq.ft. of modern living space, featuring a spacious open-plan reception/kitchen with integrated appliances and a contemporary finish throughout. The property benefits from two generous double bedrooms, excellent storage and both a family bathroom and separate shower room. Residents benefit from street parking, permit required. Ideally located on Shepherds Bush Road, within close reach of local amenities and excellent transport links, making it perfect for convenient city living.

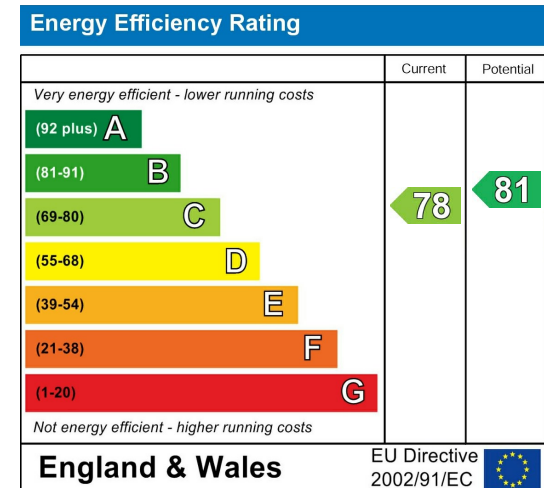
Floorplan



Area Map



Energy Efficiency Graph



These particulars, whilst believed to be accurate are set out as a general outline only for guidance and do not constitute any part of an offer or contract. Intending purchasers should not rely on them as statements of representation of fact, but must satisfy themselves by inspection or otherwise as to their accuracy. No person in this firm's employment has the authority to make or give any representation or warranty in respect of the property.

181 Chiswick High Road, Chiswick, London, W4
2DR

Tel: 020 3946 6600 Email:
chiswick@madisonbrook.com
<https://madisonbrook.com/>