



Court House Mansions, Eastway, Epsom

Guide Price £325,000



Court House Mansions

Eastway, Epsom

Modern ground floor two-bedroom flat with NO ONWARD CHAIN. Bright reception, contemporary kitchen & stylish bathroom. Allocated parking, close to town centre and station. Call now to schedule viewing!

Council Tax band: C

Tenure: Leasehold

EPC Energy Efficiency Rating: C

EPC Environmental Impact Rating: G

- No Onward Chain
- Ground Floor
- Contemporary Kitchen
- Bright & Spacious Reception
- Two Double Bedrooms
- Modern Bathroom
- Wood Flooring
- Allocated Parking
- Large Communal Gardens
- Close To Town Centre & Station



This beautifully presented two-bedroom ground floor flat offers an ideal opportunity for first-time buyers, downsizers, or investors and is available with no onward chain for a smooth purchase.

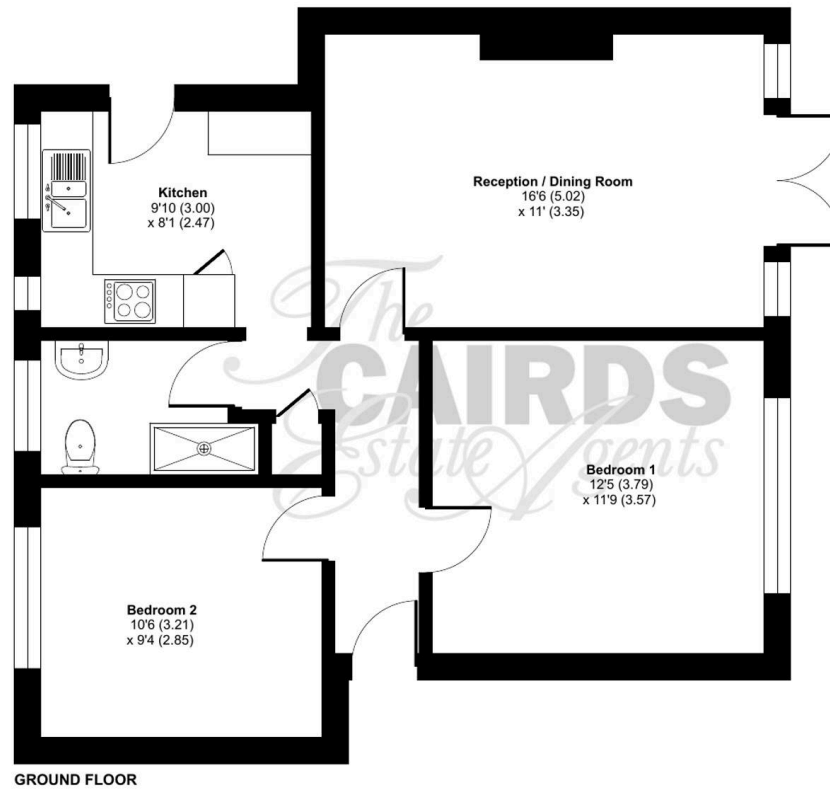
The property features a bright reception room with an elegant fireplace and double doors opening onto the communal gardens. A modern, well-equipped kitchen provides ample storage, while both bedrooms are generous doubles. The stylish bathroom is finished to a high standard, and wood flooring throughout the main living areas adds to the contemporary feel. Further benefits include allocated parking for added convenience.

Set within well-maintained communal grounds and just a short walk from the town centre and mainline station, the flat is perfectly placed for commuters and those wanting easy access to local shops, amenities, and restaurants. Offering modern living, outdoor space, and an excellent location, this is a superb home not to be missed.

Court House Mansions, Eastway, Epsom, KT19

Approximate Area = 631 sq ft / 58.6 sq m

For identification only - Not to scale







Cairds The Estate Agents

Cairds The Estate Agents, 128-130 High Street - KT19 8BT

01372 743033 • homes@cairds.co.uk • www.cairds.co.uk