



Flowe Drive, Wantage. OX12 7GS

## Flowe Drive, Wantage

A beautifully presented and spacious two bedroom semi detached home located on a private road, within the sought after Kingsgrove development on the eastern edge of Wantage, close to Charlton and within catchment for the popular GEMS Primary School. Constructed in 2021 with the balance of the remaining warranty, the property has been enhanced by the current owners with a number of upgrades and finished to a high decorative standard throughout. The spacious accommodation extends to over 850 square foot, comprises an inviting entrance hall with useful storage, leading through to a bright and airy living room. To the rear is an impressive open plan kitchen/dining space, designed with modern living in mind and fitted with a comprehensive range of units and integrated appliances. French doors open directly onto the rear garden, creating an excellent space for entertaining. The ground floor is completed by a large cloakroom and additional storage cupboard. To the first floor are two generous double bedrooms, the principal bedroom features a contemporary en suite shower room, while the family bathroom is fitted with a full sized bath and shower over. Externally, the property enjoys a newly landscaped rear garden laid to lawn with, storage shed, and gated side access to the driveway parking.



- Estate maintenance charge: £300 - £350 per annum.
- Constructed in 2021 with the balance of the remaining warranty,
- A beautifully presented two bedroom semi detached home positioned within the popular Kingsgrove development on a private road, to the eastern edge of Wantage and within catchment for GEMS School.
- Outside, the rear garden has been newly landscaped and includes a patio area, lawn, storage shed, and gated side access to the driveway parking.

2  bedrooms

1  receptions

2  bathrooms

Council Tax Band: C

Tenure: Freehold

EPC Rating: B



Inviting entrance hall with useful storage, leading through to a bright and airy living room.



The principal bedroom benefits from a contemporary en suite shower room, while the family bathroom includes a full sized bath with shower over







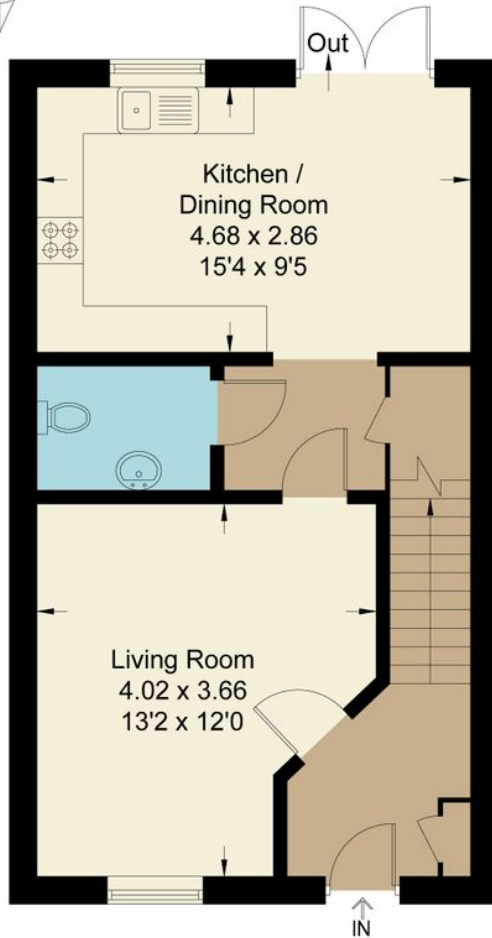
Newly landscaped and includes a patio area, lawn, storage shed, and gated side access to the driveway parking



# Flowe Drive, OX12

Approximate Gross Internal Area = 79.70 sq m / 858 sq ft

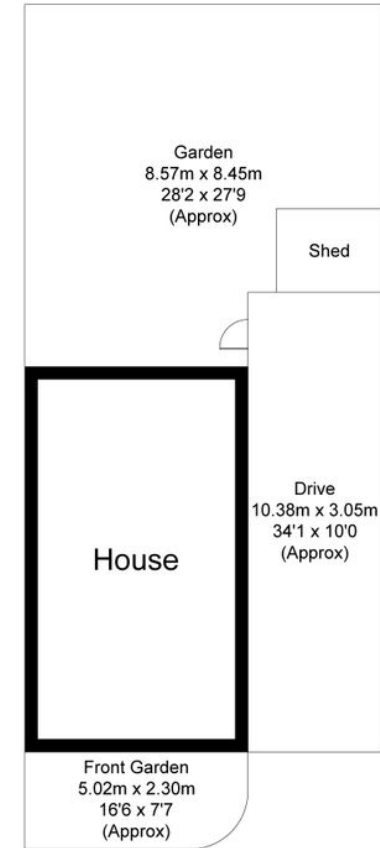
For identification only - Not to scale



**Ground Floor**



**First Floor**



Not to scale, for illustration and layout purposes only.  
© Mortimer Photography. Produced for Hodsons.  
Unauthorised reproduction prohibited