

Howard Morley & Sons



PER MONTH

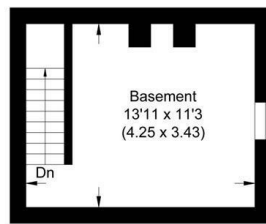
£1,850 Per Month

George Road

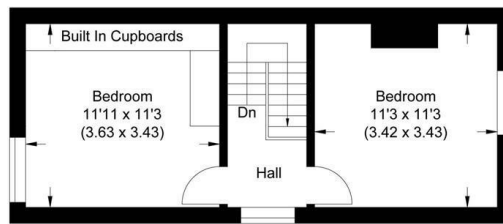
Guildford, GU1 4NP



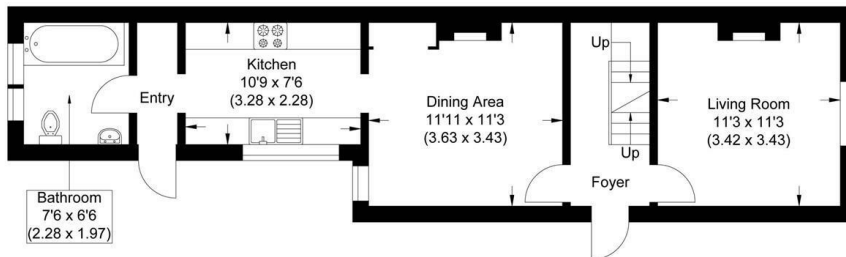
Approximate Gross Internal Area
90.01 sq m / 968.85 sq ft



Basement



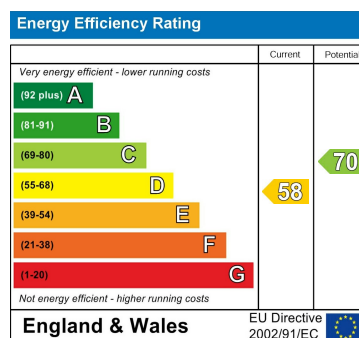
First Floor



Ground Floor

Illustration for identification purposes only, measurements are approximate, not to scale.

2	
1	
2	



Agents Note: Whilst every care has been taken to prepare these particulars, they are for guidance purposes only. All measurements are approximate and are for general guidance purposes only and whilst every care has been taken to ensure their accuracy, they should not be relied upon and potential buyers/tenants are advised to recheck the measurements

Howard Morley & Sons

OFFICE ADDRESS
276 High Street
Guildford
Surrey
GU1 3JL

OFFICE DETAILS
01483 575 304
lettings@hmorley.co.uk
hmorley.co.uk