



Bermans Way, NW10

£600 Per week

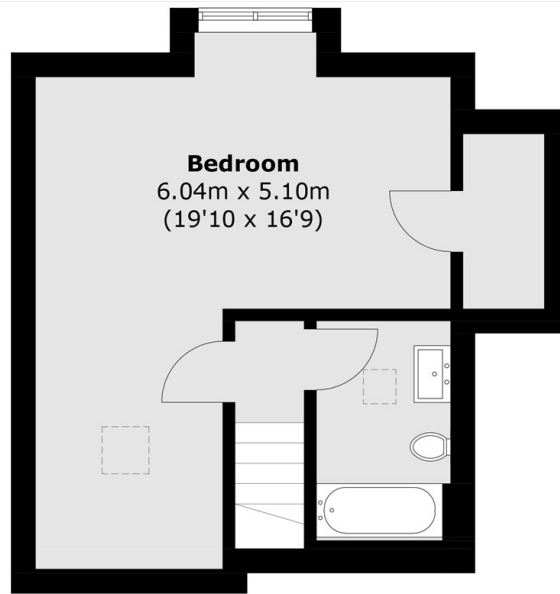
This recently built detached house is ideally situated close to Neasden and Dollis Hill stations. The property has a spacious open-plan living area with a modern integrated kitchen and direct access to a private patio, a primary bedroom with en-suite bathroom, a further bedroom and a separate shower room. You also have a beautiful front garden, underfloor heating and ample storage space.

Bermans Way is ideally located for all local amenities found on Willesden High Road with the open spaces of Gladstone Park also nearby. Neasden and Dollis Hill (Jubilee Line) are the closest stations for direct links around the city.

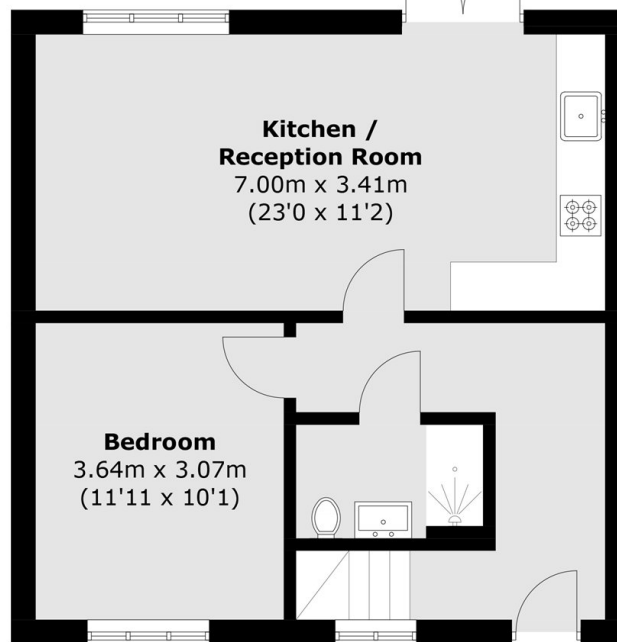
Features

- Two Bedrooms
- Two Bathrooms
- Open-Plan
- Integrated Kitchen
- Private Patio
- Ideally Situated

Bermans Way, London, NW10



First Floor



Ground Floor

Total area (approx.): 84.1 sq. m (905.2 sq. ft)