



**MILLER  
EVANS**

SHREWSBURY'S ESTATE AGENT

**3 Underdale Court, Underdale Road, Shrewsbury,  
SY2 5DD**

**Offers in the Region of  
£725,000**

To view this property please call us on **01743 236 800** Ref: T8071/SL/KQ



---

# A superior and distinctive, four bedroom, detached residence situated in an exclusive private road and providing an ideal retreat for families and those seeking a more peaceful and secluded lifestyle.

The property is individually designed and finished to a high standard and sits proudly within a generous and beautifully maintained plot, and benefits from double glazing, gas fired central heating and a security alarm system.

The property is well placed within easy reach of excellent amenities and situated within close proximity of the nearby town centre, excellent schools, pleasant river walks and well placed within easy reach of the Shrewsbury by-pass which allows easy access onto the M54 motorway link leading to the West Midlands.



---

## INSIDE THE PROPERTY

### ENTRANCE PORCH

### SPACIOUS ENTRANCE HALL

Built in understairs store cupboard housing CAT 5, 3 zone music system cabling supplying the Kitchen, dining room and master bedroom.

Solid oak floor

### LIVING ROOM

18'9" x 13'0" (5.72m x 3.96m)

A pleasant through room with solid limestone fireplace incorporating integrated wood burning stove with option of a gas connection.

Bay window to the front

Further window overlooking the rear garden

### FAMILY ROOM / DINING ROOM

13'5" x 14'9" (4.09m x 4.50m)

Glazed French doors opening onto the rear garden

### KITCHEN / BREAKFAST ROOM

9'9" x 14'9" (2.97m x 4.50m)

Neatly appointed and fitted with a range of matching units

Integrated Neff double electric oven, Bosch hob with extractor over

Integrated Siemens dishwasher

Bosch fridge and freezer

### UTILITY ROOM

5'6" x 10'10" (1.68m x 3.29m)

Matching range of units

Wall mounted Combi boiler

### CLOAKROOM

Wash hand basin, wc

From the entrance hall, a STAIRCASE rises to a spacious FIRST FLOOR LANDING with large built in linen cupboard with shelving and housing Megaflow hot water system. Pull down loft ladder to boarded roof space with light.

### MASTER BEDROOM

19'2" x 14'9" (5.85m x 4.50m)

Extensive range of Hammonds hand crafted built in wardrobes extending the length of one wall.

### LUXURIOUSLY APPOINTED EN SUITE BATHROOM

Panelled bath

Dressing surface with hand basin, wc

Corner shower cubicle

### BEDROOM 2

9'9" x 14'9" (2.98m x 4.50m)

Range of Hammonds hand crafted built in wardrobes and fitted dressing surface

### BEDROOM 3

10'0" x 13'0" (3.05m x 3.96m)

Range of Hammonds hand crafted built in wardrobes

### BEDROOM 4

8'5" x 11'11" (2.57m x 3.62m)

### FAMILY BATHROOM

Panelled bath

Dressing surface with inset hand basin, wc

## OUTSIDE THE PROPERTY

### DETACHED DOUBLE GARAGE

Brick built with tiled roof

Twin up and over electric roller doors

Personal door with side window to the garden

Power and lighting

Two electric car charging points

The property is approached from the private drive through a pillared entrance with a block paved forecourt providing ample parking space and serving the double garage. An ornamental gate with balustrade allows access to a pathway leading to the reception area.

Large private gardens surround the property with mature planting, mature specimen trees and extensive lawns, together with a paved patio and terrace providing ample space for outdoor entertaining. The setting is shielded from passing traffic and enjoys considerable privacy enhancing the home's secluded and exclusive atmosphere. Cold water supply tap and outside lighting and further power point for garden lighting.

---



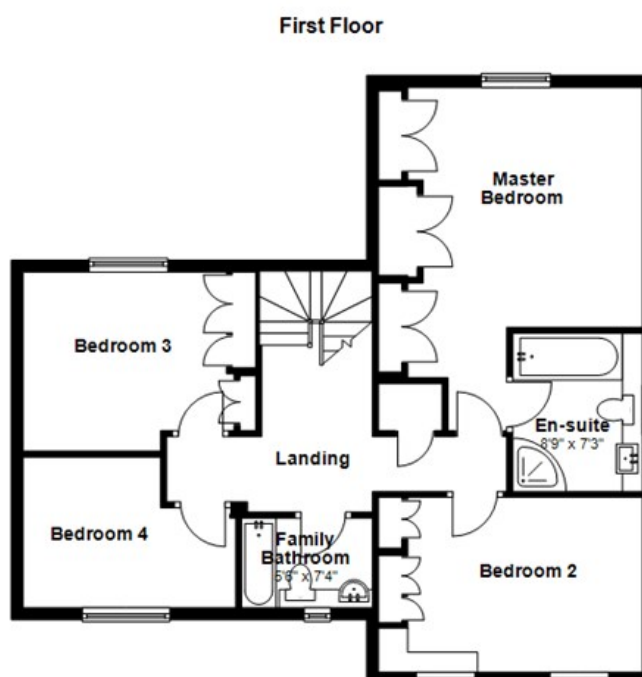
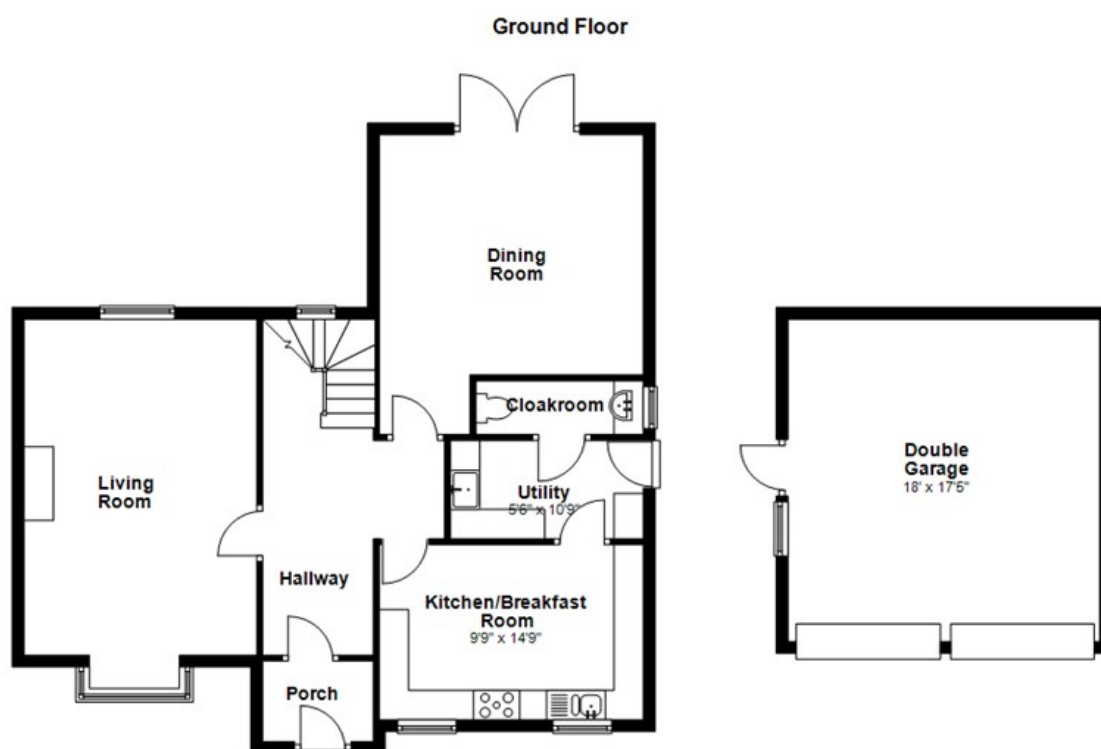








## FLOOR PLANS ...



Total area: approx. 2061.5 sq. feet

Illustration For Identification Purposes Only. Not To Scale.  
Plan produced using PlanUp.



## HOW TO FIND THIS PROPERTY

The property is best approached out of Shrewsbury over the English Bridge. Continue along Abbey Foregate to the traffic lights, turning left into Monkmoor Road. Continue for a short distance, eventually turning left into Bradford Street, at the bottom of Bradford Street, turn right into Underdale Road and continue for some distance, eventually turning right into Underdale Court. Continue to the top of the private road, where the property will be found on the left hand side.



Energy Efficiency Rating		
	Current	Potential
Very energy efficient - lower running costs		
(92 plus) A		
(81-91) B		
(69-80) C		
(55-68) D		
(39-54) E		
(21-38) F		
(1-20) G		
Not energy efficient - higher running costs		
England & Wales EU Directive 2002/91/EC		

Environmental Impact (CO <sub>2</sub> ) Rating		
	Current	Potential
Very environmentally friendly - lower CO <sub>2</sub> emissions		
(92 plus) A		
(81-91) B		
(69-80) C		
(55-68) D		
(39-54) E		
(21-38) F		
(1-20) G		
Not environmentally friendly - higher CO <sub>2</sub> emissions		
England & Wales EU Directive 2002/91/EC		

### SERVICES

We understand that mains water, electricity, drainage and natural gas are connected

### TENURE

We are advised that this property is Freehold and this will be confirmed by the vendors' solicitors during pre-contract enquiries

### LOCAL AUTHORITIES

Shropshire Council  
Shirehall, Abbey Foregate, Shrewsbury SY2 6ND.  
Tel: 0345 678 9000

Council Tax Band: F

Miller Evans is fully committed to implementing the GDPR 2018 and the Money Laundering Regulations 2017 and will at all times ensure that your personal data is held in strict accordance with the law.

### IMPORTANT NOTICE

Our particulars have been prepared with care and are checked where possible by the vendor. They are however, intended as a guide. Measurements, areas and distances are approximate. Appliances, plumbing, heating and electrical fittings are noted, but not tested. Legal matters including Rights of Way, Covenants, Easements, Wayleaves and Planning matters have not been verified and should take advice from your legal representatives and Surveyor.

### DO YOU HAVE A PROPERTY TO SELL?

We will always be pleased to give you a no obligation market assessment of your existing property to help you with your decision to move.

FIND OUR PROPERTIES ON:



The UK's number one property website

Head Office:

Residential Sales

4 Barker Street, Shrewsbury SY1 1QJ

Tel: 01743 236800 | Fax: 01743 248671

Lettings and Property Management

6 Claremont Hill, Shrewsbury SY1 1RD

Tel: 01743 272726 | Fax: 01743 360148

South Shropshire Sales Office

4 The Square, Church Stretton SY6 6DA

Tel: 01694 724700 | Fax: 01743 248671



[www.millerevans.co.uk](http://www.millerevans.co.uk) | [homes@millerevans.co.uk](mailto:homes@millerevans.co.uk)

Members of: National Association of Estate Agents | Guild of Professional Estate Agents | National Federation of Property Professionals.

Partners: David. C. Evans, David S. Miller (FNAEA) • Stuart Langley (FNAEA), Georgie Miller BSc (Hons)