

PCM

£2,250 PCM

Welwyn Street

London, E2 0JN

Set on the ground floor of a period mansion block with communal courtyard is this large 2 double bedroom apartment.

The property features a large separate fitted reception room, modern fitted kitchen and bathroom and 2 good size double bedrooms.

The property has wood flooring throughout, sash windows and gas central heating.

Unfurnished.

Available from the middle of January

Council Tax: Band C

5 weeks deposit: 2596.15

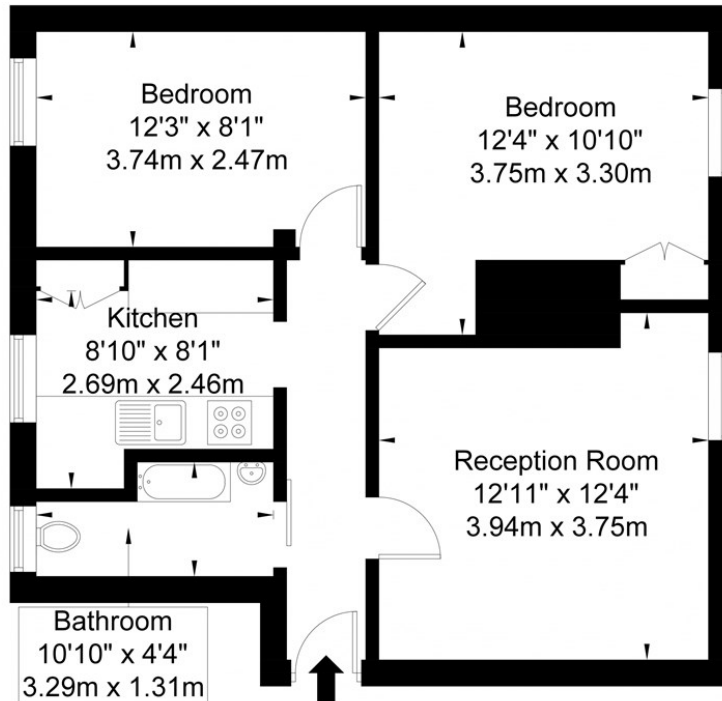
12 month contract: Breakclause subject to offer





Shepton House Welwyn Street E2 0JN

Approx. Gross Internal Area = 51.9 sq m / 558 sq ft



Ground Floor

Ref

Copyright **BLEU PLAN**

Disclaimer : Floor plan measurements are approximate and are for illustrative purposes only. While we do not doubt the floor plan accuracy and completeness, you or your advisors should conduct a careful, independent investigation of the property in respect of monetary valuation.

Energy Efficiency Rating		
	Current	Potential
Very energy efficient - lower running costs		
(92 plus) A		
(81-91) B		
(69-80) C		
(55-68) D		
(39-54) E		
(21-38) F		
(1-20) G		
Not energy efficient - higher running costs		
England & Wales	EU Directive 2002/91/EC	

Agents Note: Whilst every care has been taken to prepare these particulars, they are for guidance purposes only. All measurements are approximate and are for general guidance purposes only and whilst every care has been taken to ensure their accuracy, they should not be relied upon and potential buyers/tenants are advised to recheck the measurements

OFFICE ADDRESS

88 Cheshire Street
London
E2 6EH

OFFICE DETAILS

0207 739 6969
info@peachproperties.com
www.peachproperties.com