



Haygreen Close, KT2

£1,995 Per calendar month

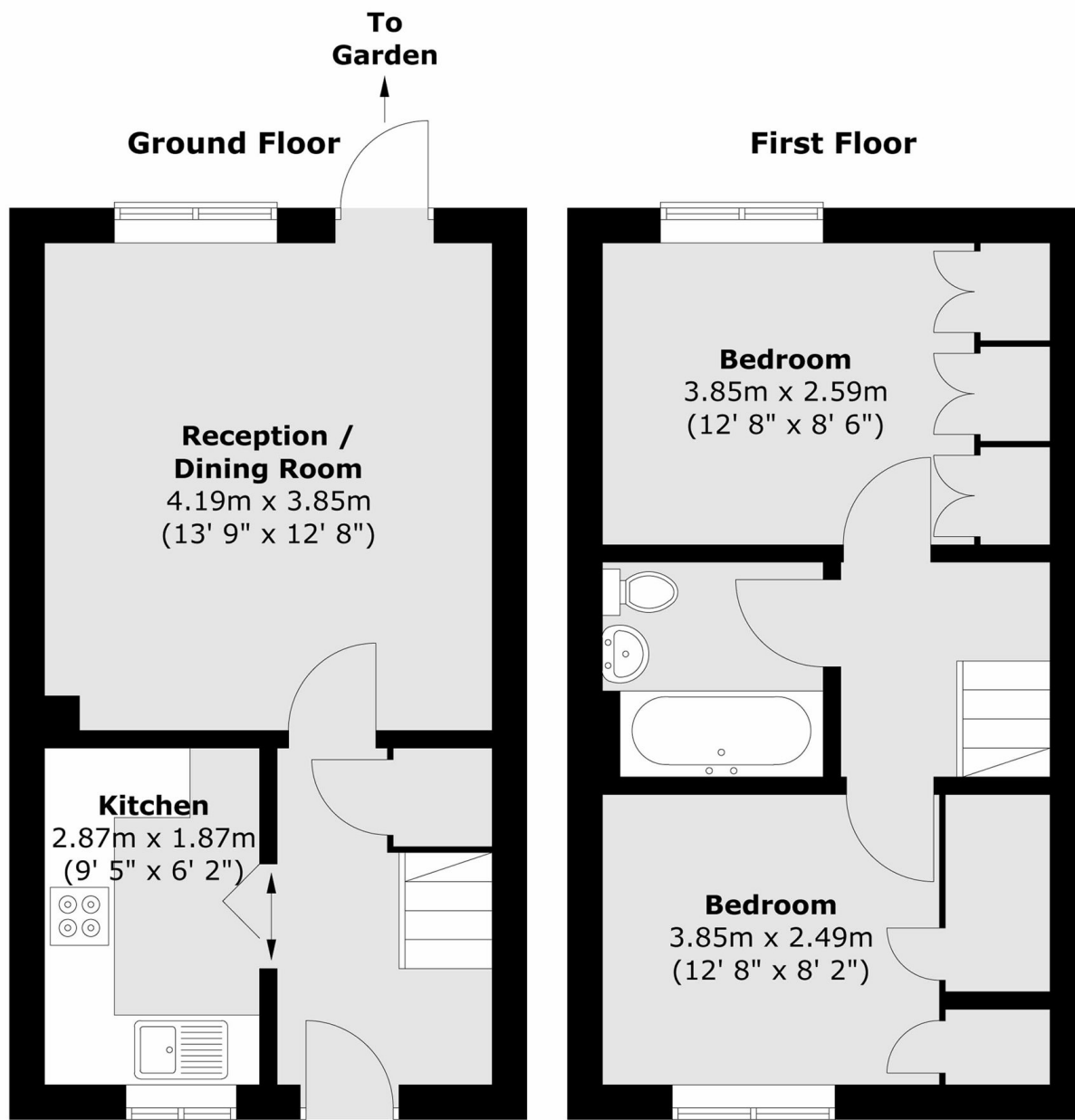
A two bedroom terraced property in Kingston Hill cul de sac location under a mile from Norbiton station. Driveway parking, newly fitted kitchen, lounge with access to private rear garden. Upstairs two good bedrooms and bathroom. Available unfurnished in good decorative order.

Haygreen Close is centrally situated within Kingston Upon Thames and is ideally positioned for the River Thames, Norbiton mainline train station and the areas extensive shopping and leisure amenities including both high street and artisan shops, independent coffee shops and fabulous bars and restaurants.

Features

- Two Bedroom House
- Separate Kitchen
- Private Garden
- Private Parking
- Neutral Decor
- Quiet Location

Haygreen Close, Kingston Upon Thames, KT2



Total area (approx.) : 56.2 sq. m (605 sq. ft)