

# Ambassador Building, SW11

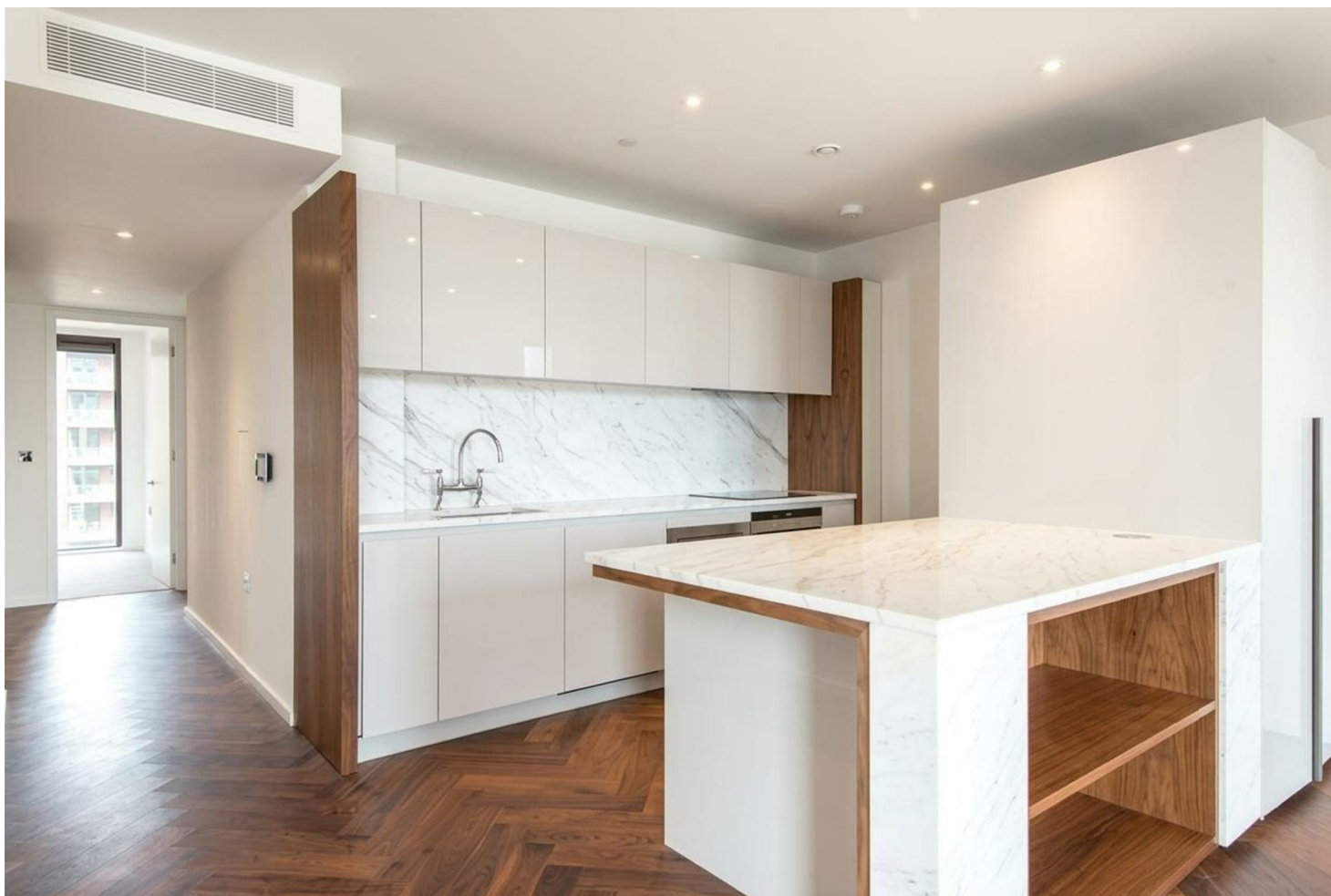


A beautifully presented two double bedroom, two bathroom apartment set within the highly sought-after Embassy Gardens development in the heart of Nine Elms. The apartment offers well-proportioned accommodation throughout, comprising a generous principal bedroom with built-in wardrobes and contemporary en-suite shower room, a second double bedroom also benefiting from fitted wardrobes and a stylish family bathroom with shower over bath. The bright open-plan kitchen and reception/dining area features sleek marble worktops and opens directly onto a private balcony, ideal for both everyday living and entertaining.

Additional highlights include excellent storage, solid wood flooring and high-quality fixtures and finishes throughout.

Ideally located approximately 0.9 km from Vauxhall Underground and mainline stations, residents of Embassy Gardens enjoy access to exceptional on-site amenities including a 24-hour concierge, private cinema, residents' lounge, library, gym and swimming pool.

**1139.00 sq ft | 1 RECEPTION ROOM | 2 BEDROOMS | EN SUITE SHOWER ROOM | 2 BATHROOMS | KITCHEN**

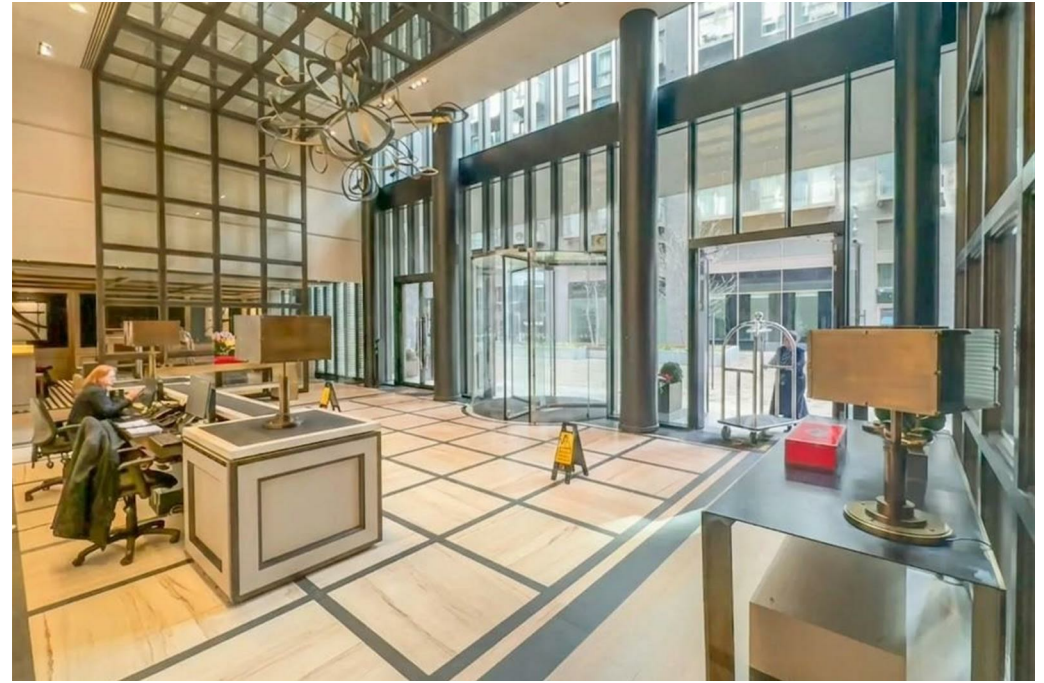


**Guide Price £1,075,000**

**020 7937 9070**  
**[www.croft-international.com](http://www.croft-international.com)**

**Leasehold**





# Floorplan

