



Connells

Alexander Square
Eastleigh

Alexander Square Eastleigh SO50 4BX

for sale guide price
£185,000



Property Description

A beautifully presented upper-floor apartment located in the sought-after Alexander Square, Eastleigh.

From the welcoming entrance hall with built-in storage, you are led into a bright open-plan lounge featuring doors opening onto a generous private balcony - perfect for relaxing or entertaining.

The lounge flows seamlessly into the modern fitted kitchen, complete with integral oven and contemporary finishes.

The master bedroom benefits from its own stylish en-suite shower room, while the second bedroom is ideal for guests, family, or a home office.

A well-appointed family bathroom completes the accommodation.

Externally, residents enjoy the added benefits of allocated parking and access to communal gardens.

Situated in an excellent position close to Eastleigh town centre, transport links and local amenities, this wonderful apartment offers modern living in a convenient and desirable location.

An ideal first home, downsize or investment opportunity.

Entrance Hall

Two storage cupboards one housing the water tank, radiator and telephone intercom.

Lounge

Double glazed windows to front and side aspect, radiator, large storage space, built in storage cupboard and telephone and TV points. Double glazed doors to balcony.

Kitchen

Double glazed window to side aspect, fitted kitchen with wall and base units, one bowl stainless steel sink with drainer, work surfaces, tiling, cooker-hood, radiator, integrated electric oven, integrated electric hob, space for washing machine and fridge/freezer.



Bedroom 1

Double glazed window to front aspect, radiator, telephone and TV point.

En-Suite

Wash hand basin, extractor fan, WC, shaver point, radiator, shower cubicle and part tiling.

Bedroom 2

Double glazed window to front aspect. Radiator.

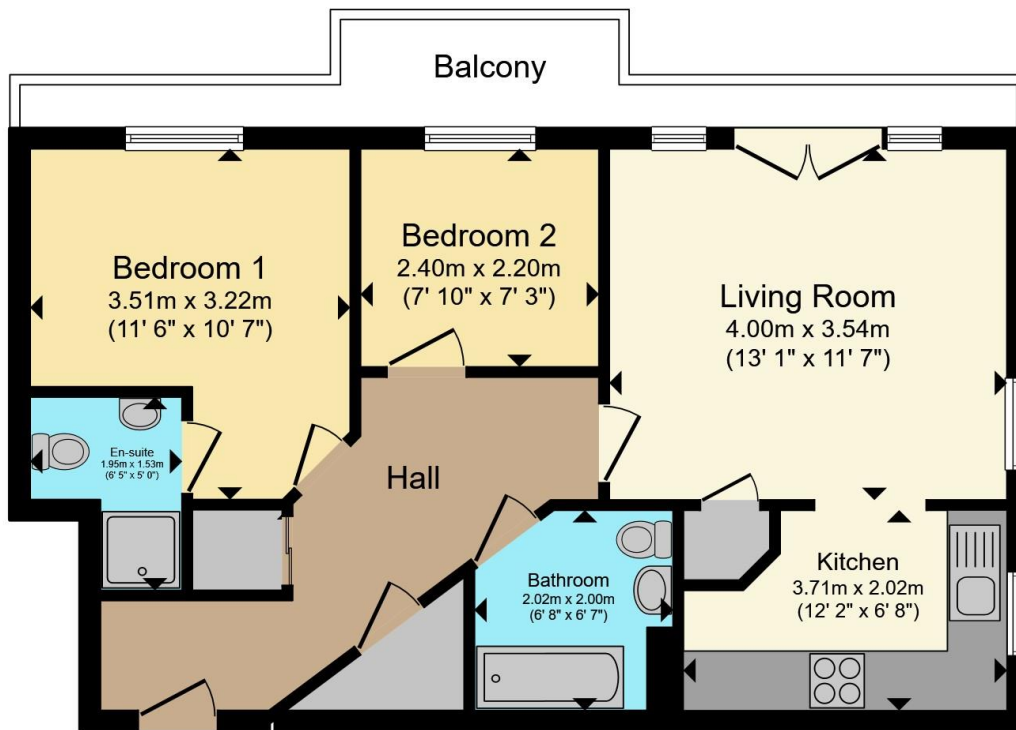
Bathroom

Radiator, bath with mixer taps, wash hand basin, extractor fan, toilet and part tiling.

Outside

Allocated parking.
Communal garden.





Total floor area 54.1 m² (582 sq.ft.) approx

This floor plan is for illustrative purposes only. It is not drawn to scale. Any measurements, floor areas (including any total floor area), openings and orientation are approximate. No details are guaranteed, they cannot be relied upon for any purpose and they do not form part of any agreement. No liability is taken for any error, omission or misstatement. A party must rely upon its own inspection(s). Powered by www.propertybox.io

Connells



To view this property please contact Connells on

T 02380 618 343
E eastleigh@connells.co.uk

19 Market Street
 EASTLEIGH SO50 5RH

EPC Rating: C

Council Tax
 Band: B

Service Charge:
 2390.00

Ground Rent:
 500.00

Tenure: Leasehold

view this property online connells.co.uk/Property/EGH309332

This is a Leasehold property with details as follows; Term of Lease 155 years from 01 May 2008. Should you require further information please contact the branch. Please Note additional fees could be incurred for items such as Leasehold packs.



1. MONEY LAUNDERING REGULATIONS Intending purchasers will be asked to produce identification documentation at a later stage and we would ask for your co-operation in order that there will be no delay in agreeing the sale. 2. These particulars do not constitute part or all of an offer or contract. 3. The measurements indicated are supplied for guidance only and as such must be considered incorrect. Potential buyers are advised to recheck measurements before committing to any expense. 4. We have not tested any apparatus, equipment, fixtures, fittings or services and it is in the buyers interest to check the working condition of any appliances.

Connells Residential is registered in England and Wales under company number 1489613, Registered Office is Cumbria House, 16-20 Hockliffe Street, Leighton Buzzard, Bedfordshire, LU7 1GN. VAT Registration Number is 500 2481 05.

See all our properties at www.connells.co.uk | www.rightmove.co.uk | www.zoopla.co.uk

Property Ref: EGH309332 - 0003