

SIMMONS & SONS



The Stables, Lyde House, Greywell Road, Basingstoke £1,195 PCM

ALL UTILITIES INCLUDED. Very stylish, one bedroom first floor apartment in a quiet rural setting which is only 10 minutes drive from M3 J6 and Basingstoke. Presented in excellent condition the property has its own private entrance and comes with parking. There is a spacious open plan living/dining/kitchen with loft storage space which has ladder access. The kitchen has an electric hob, fridge/freezer, dishwasher and washing machine. Landing with storage cupboard, good sized bedroom with built in wardrobes and storage, impressive shower room with tumble dryer. Oil fired radiators throughout and parking to the rear of the property. Suit professional single person or couple. Some furniture available by separate negotiation. Regret No Pets. EPC rating C/77.

- Rural Location
- Utilities Included
- EPC Rating C/77
- Stylish One Bedroom Apartment
- Parking

The Stables, Lyde House, Greywell Road, Basingstoke

£1,195 PCM

ALL UTILITIES INCLUDED. A stylish, one bedroom, first floor apartment set in a countryside location. EPC rating: C/77.

Reception 1

Reception 1

Kitchen

Kitchen

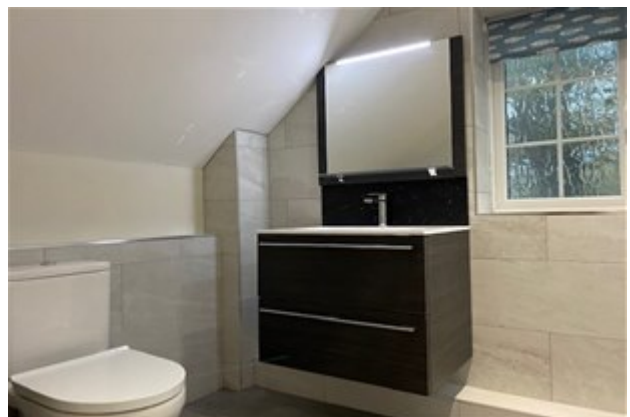
Disclaimer

Simmons and Sons Surveyors LLP for themselves and for the vendors or lessors of the property whose agents they are give notice that: (i) the particulars are produced in good faith, are set out as a general guide only and do not constitute any part of a contract or offer; (ii) all descriptions, dimensions, references to condition and necessary permissions for use and occupation, and any other details are given in good faith and are believed to be correct, but any intending purchasers or tenants should not rely on them as statements or representations of fact but must satisfy themselves by inspection or otherwise as to the correctness of each of them; (iii) No person in the employment of Simmons and Sons has any authority to make or give any representation or warranty whatsoever in relation to this property.

To book an appointment to view this property please phone the Basingstoke Lettings branch and quote ID: 92968.

The Stables, Lyde House, Greywell Road, Basingstoke

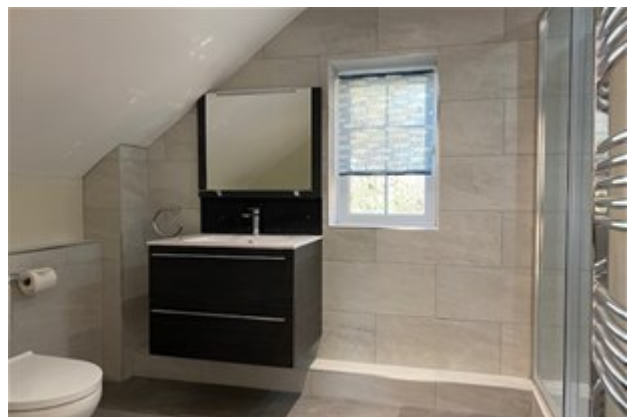
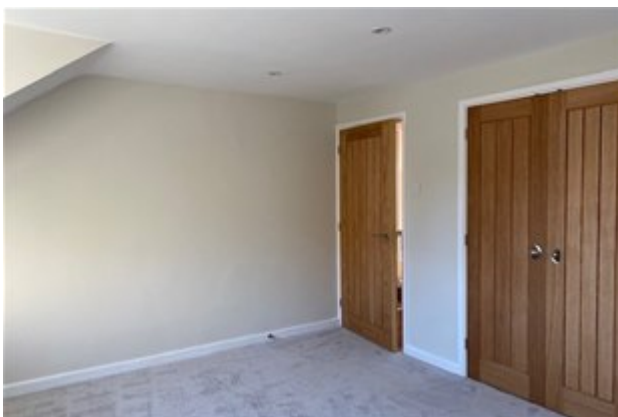
£1,195 PCM



Viewings via: Simmons & Sons, 12 Wote Street, Basingstoke, Hants, RG21 7NW

The Stables, Lyde House, Greywell Road, Basingstoke

£1,195 PCM



Viewings via: Simmons & Sons, 12 Wote Street, Basingstoke, Hants, RG21 7NW

The Stables, Lyde House, Greywell Road, Basingstoke

£1,195 PCM



The Stables, Lyde House, Greywell Road, Basingstoke

£1,195 PCM

