



Stoneacre
Properties



Gipton Square

Leeds, LS9 6NS

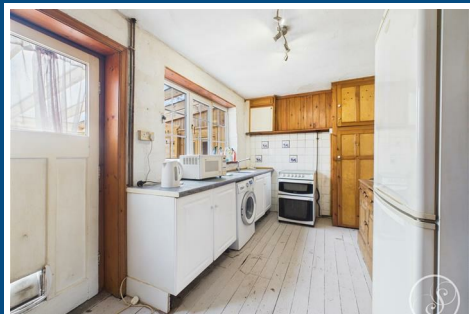
£190,000



Gipton Square

Leeds, LS9 6NS

£190,000



ENTRANCE HALL

Front door with central heating radiator and staircase to the first floor.

LIVING ROOM

Door leading to the kitchen, laid with carpet, large window, and central heating radiator.

KITCHEN

Wooden flooring, fitted cupboards, two separate storage rooms, large window, and door leading to the conservatory.

SUN ROOM

Door to the garden, wooden flooring, two large windows, and central heating radiator.

BEDROOM 1

Fitted cupboard, tall ceilings, large window, and central heating radiator.

BEDROOM 2

Combi boiler, tall ceilings, large window, and central heating radiator.

BEDROOM 3

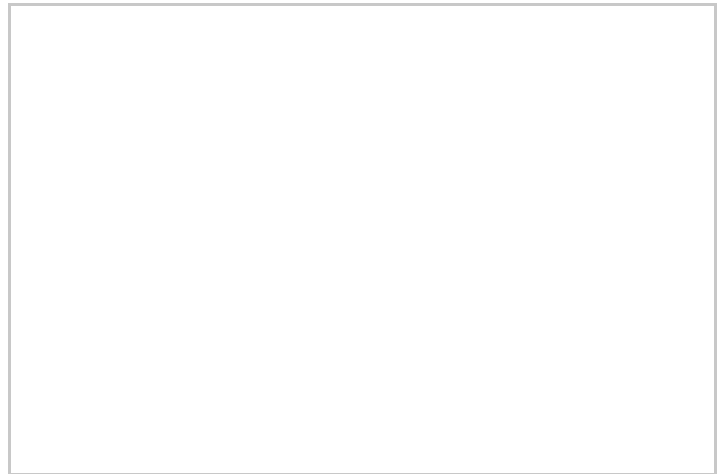
Tall ceilings, large window, and a central heating radiator.

BATHROOM

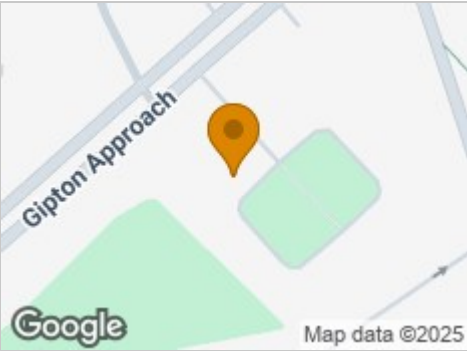
Tiled flooring, central heating towel radiator, free-standing corner shower, wash hand basin, low flush W.C., and a small frosted window.

EXTERNAL

Gated driveway, side gate providing access to the back garden, and a small front garden.



Road Map



Hybrid Map



Terrain Map



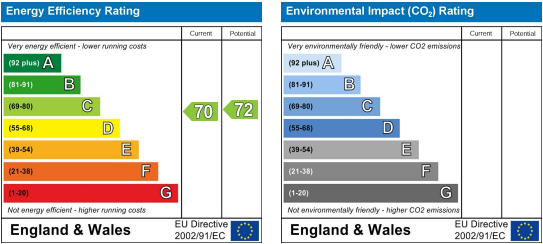
Floor Plan



Viewing

Please contact our Chapel Allerton Sales Office on 0113 237 0999 if you wish to arrange a viewing appointment for this property or require further information.

Energy Efficiency Graph



These particulars, whilst believed to be accurate are set out as a general outline only for guidance and do not constitute any part of an offer or contract. Intending purchasers should not rely on them as statements of representation of fact, but must satisfy themselves by inspection or otherwise as to their accuracy. No person in this firms employment has the authority to make or give any representation or warranty in respect of the property.