

Espalier Gardens, NW6

£2,950 Per calendar month

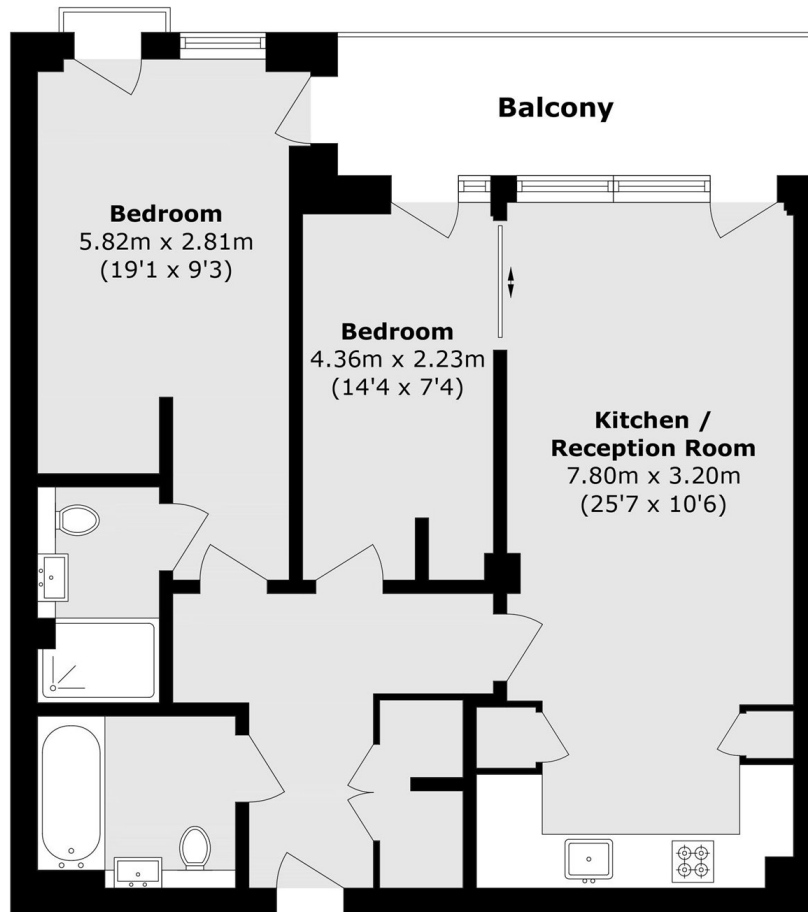
Set in this brand new portered development is a fantastic two double bedroom, two bathroom apartment with a private balcony. The apartment is finished to the highest of standards with wooden floors and modern fittings.

Situated near Kilburn High Road, this location offers excellent access to Jubilee Line and Overground stations, along with a great selection of shops and dining options. The building also backs onto Grange Park and its tennis courts, providing a lovely green space to enjoy.

Features

- Two Bedrooms
- Two Bathrooms
- Open Plan
- Balcony
- Furnished
- Modern

Espalier Gardens, London, NW6



Total area (approx.): 70.5 sq. m (758.8 sq. ft)
Balcony area (approx.): 7.9 sq. m (85 sq. ft)